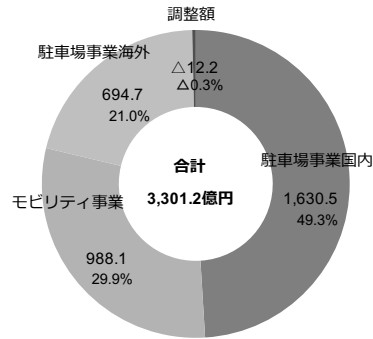


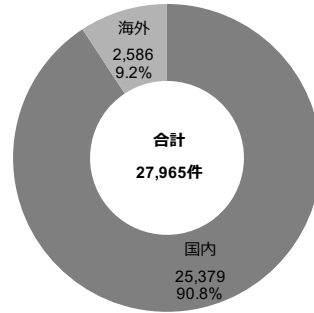
00.ハイライト

00-1.通期ハイライト

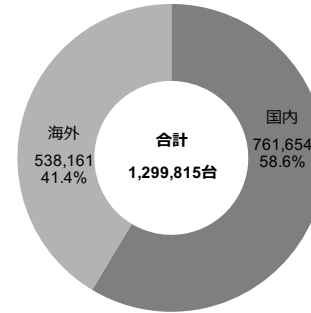
‘23/10月期 売上高 (億円)



‘23/10月期末 駐車場 件数



‘23/10月期末 駐車場 台数



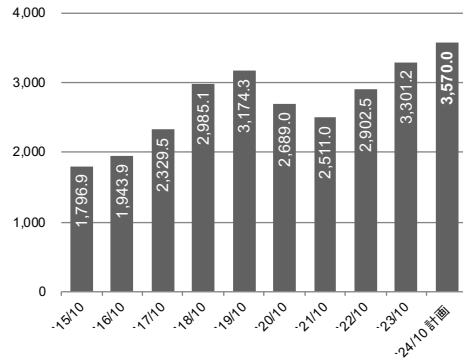
‘23/10月期末 タイムズカー関連数値

貸出拠点数	16,017 箇所
車両合計	60,047 台
うち、タイムズカー専用	42,174 台
会員数	2,423.8 千人

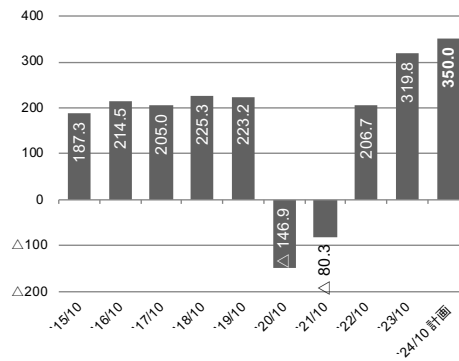
‘23/10月期末 会員関連数値

タイムズクラブ 会員	10,837.6 千人
タイムズビジネスサービス 発行カード	1,392.1 千枚
タイムズベイ加盟店数	31,550 店

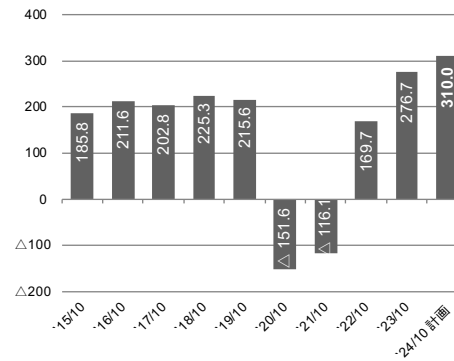
売上高 (億円)



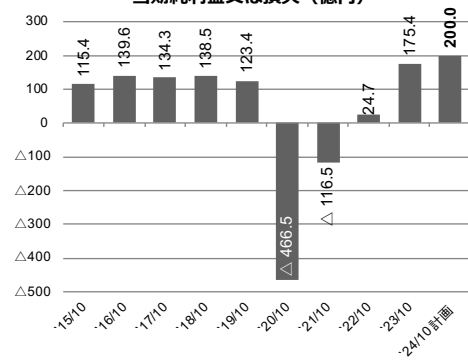
営業利益又は損失 (億円)



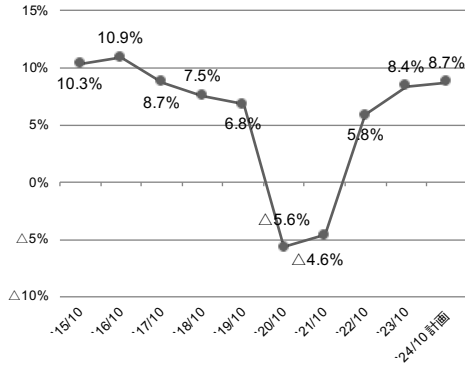
経常利益又は損失 (億円)



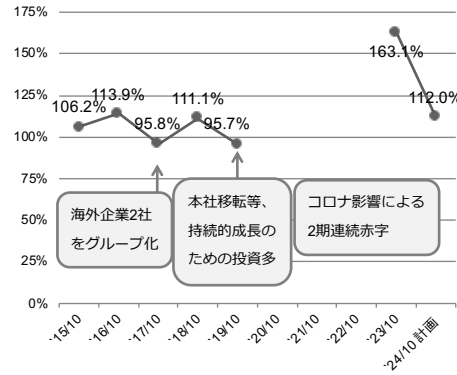
親会社株主に帰属する
当期純利益又は損失 (億円)



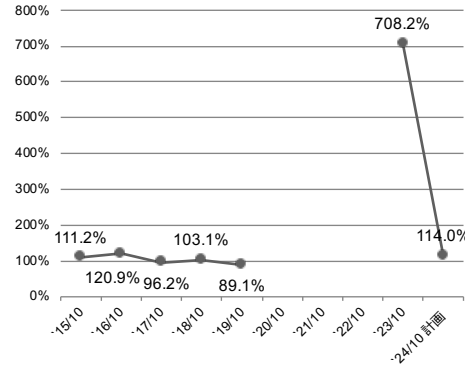
経常利益率



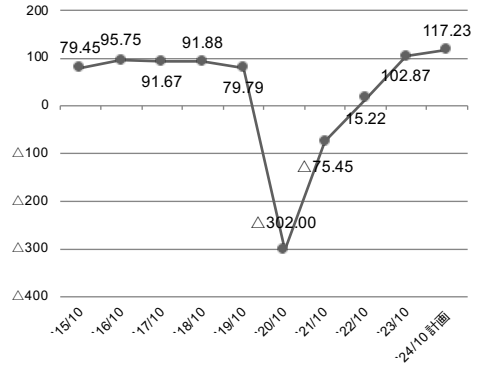
経常利益前期比



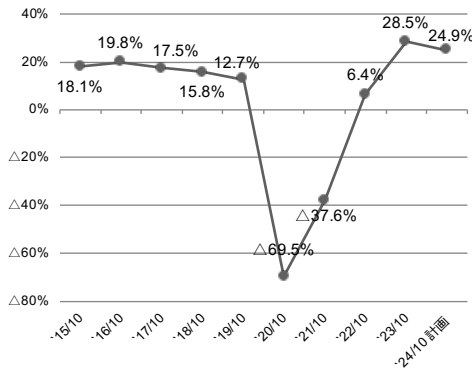
親会社株主に帰属する当期純利益前期比



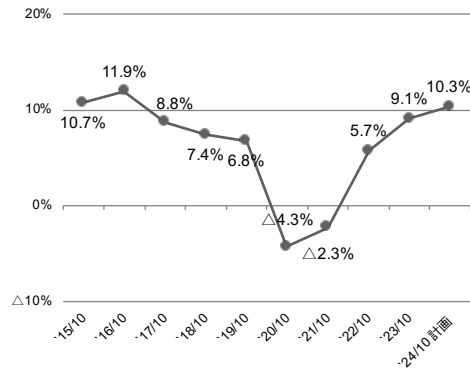
一株当たり当期純利益(EPS)



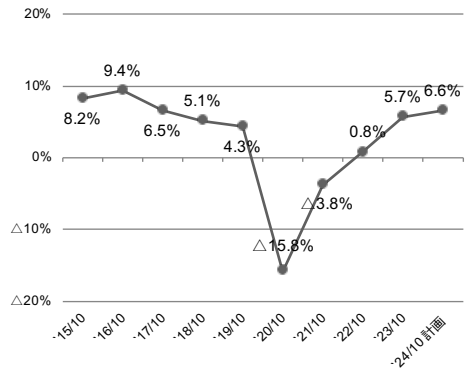
株主資本当期純利益率(ROE)



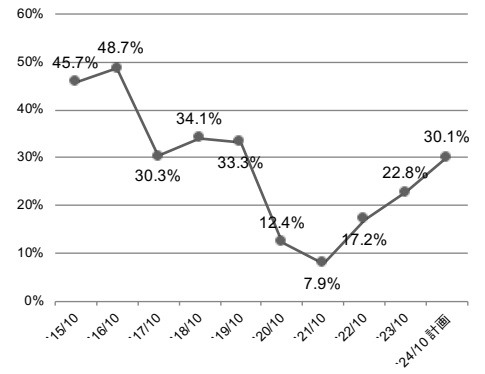
投下資本利益率(ROIC*)



総資産当期純利益率(ROA)

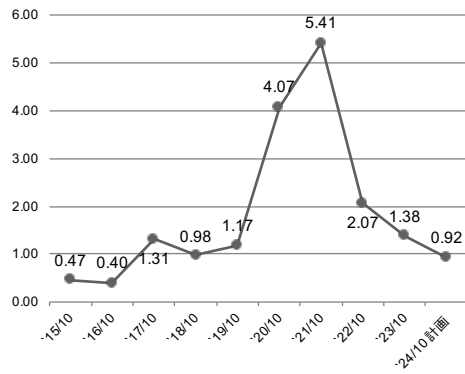


株主資本比率



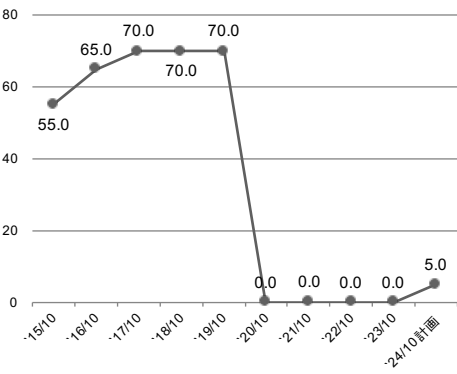
*ROIC : 営業利益×(1-法定実効税率)/(有利子負債+株主資本)

ネットD/ELレシオ*

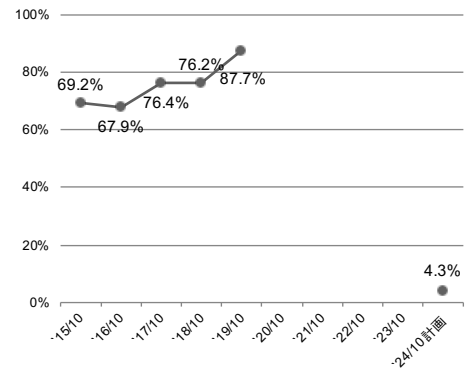


*ネットD/ELレシオ : (有利子負債-現金及び預金)/株主資本

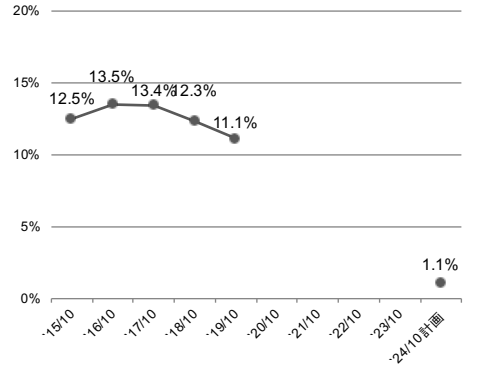
一株当たり配当金



配当性向



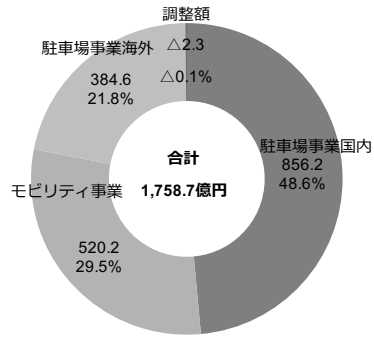
株主資本配当率(DOE*)



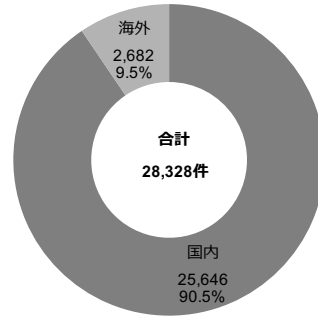
*DOE : 配当総額/株主資本

00-2.上期ハイライト

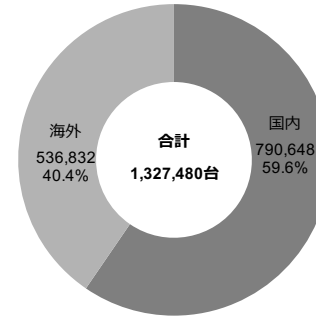
‘24/10期 上期 売上高 (億円)



‘24/10期 上期 駐車場 件数



‘24/10期 上期 駐車場 台数



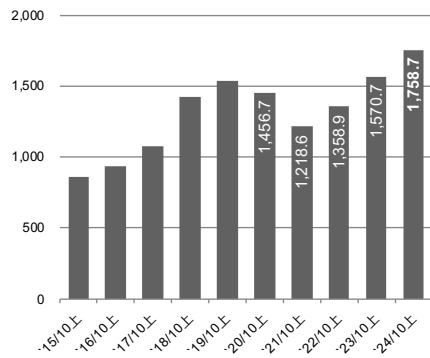
‘24/10期 上期 タイムズカー関連数値

貸出拠点数	18,091 箇所
車両合計	64,363 台
うち、タイムズカー専用	46,756 台
会員数	2,693.0 千人

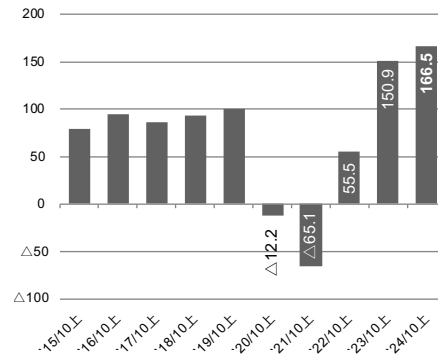
‘24/10期 上期 会員関連数値

タイムズクラブ 会員	11,315.6 千人
タイムズビジネスサービス 発行カード	1,475.3 千枚
タイムズベイ加盟店数	32,481 店

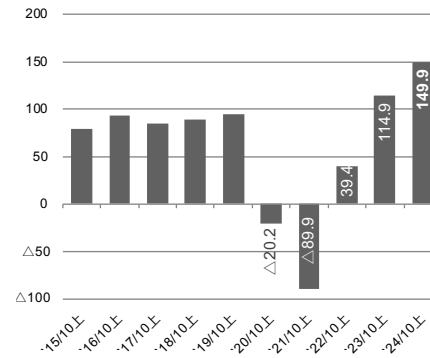
売上高 (億円)



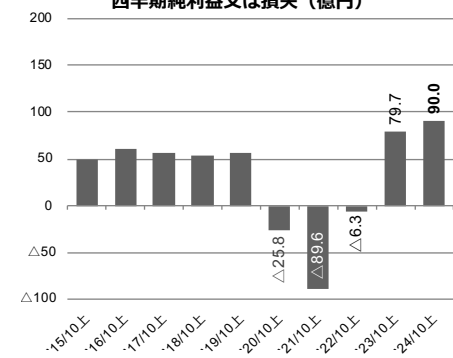
営業利益又は損失 (億円)



経常利益又は損失 (億円)



親会社株主に帰属する
四半期純利益又は損失 (億円)



01.連結業績

(下段：前年同期比)

		'15/10	'16/10	'17/10	'18/10	'19/10	'20/10	'21/10	'22/10	'23/10	'24/10 計画	'20/10 上期	'21/10 上期	'22/10 上期	'23/10 上期	'24/10 上期
売上高	(百万円)	179,698	194,398	232,956	298,517	317,438	268,904	251,102	290,253	330,123	357,000	145,679	121,865	135,891	157,078	175,875
		107.6%	108.2%	119.8%	128.1%	106.3%	84.7%	93.4%	115.6%	113.7%	108.1%	94.5%	83.7%	111.5%	115.6%	112.0%
売上原価		132,992	141,349	172,767	226,234	239,346	232,556	210,408	219,659	240,496	258,050	120,121	104,655	106,207	115,463	129,823
		108.2%	106.3%	122.2%	130.9%	105.8%	97.2%	90.5%	104.4%	105.5%	107.3%	102.1%	87.1%	101.5%	108.7%	112.4%
売上総利益		46,706	53,048	60,188	72,283	78,092	36,347	40,693	70,593	89,626	98,950	25,557	17,209	29,684	41,614	46,051
		105.9%	113.6%	113.5%	120.1%	108.0%	46.5%	112.0%	173.5%	127.0%	110.4%	70.1%	67.3%	172.5%	140.2%	110.7%
販売費及び一般管理費		27,975	31,595	39,683	49,743	55,770	51,045	48,732	49,921	57,639	63,950	26,787	23,725	24,128	26,517	29,397
		105.4%	112.9%	125.6%	125.4%	112.1%	91.5%	95.5%	102.4%	115.5%	110.9%	101.1%	88.6%	101.7%	109.9%	110.9%
営業利益 又は損失(△)		18,730	21,453	20,505	22,539	22,322	△14,698	△8,039	20,672	31,986	35,000	△1,229	△6,515	5,556	15,097	16,654
		106.7%	114.5%	95.6%	109.9%	99.0%	-	-	-	154.7%	109.4%	-	-	-	271.7%	110.3%
経常利益 又は損失(△)		18,589	21,164	20,281	22,532	21,566	△15,168	△11,619	16,970	27,673	31,000	△2,020	△8,998	3,948	11,493	14,998
		106.2%	113.9%	95.8%	111.1%	95.7%	-	-	-	163.1%	112.0%	-	-	-	291.0%	130.5%
親会社株主に帰属する当期純利益 又は損失(△)		11,549	13,963	13,439	13,851	12,348	△46,652	△11,658	2,476	17,542	20,000	△2,589	△8,960	△630	7,979	9,009
		111.2%	120.9%	96.2%	103.1%	89.1%	-	-	-	708.2%	114.0%	-	-	-	-	112.9%
EBITDA*		39,267	43,386	45,728	53,176	55,767	24,678	26,735	52,160	63,502	67,000	18,991	10,359	21,348	30,615	33,378
		107.9%	110.5%	105.4%	116.3%	104.9%	44.3%	108.3%	195.1%	121.7%	105.5%	72.1%	54.5%	206.1%	143.4%	109.0%

*EBITDA：営業利益＋減価償却費＋のれん等償却額

02.収益性

(下段：前年同期差)

		'15/10	'16/10	'17/10	'18/10	'19/10	'20/10	'21/10	'22/10	'23/10	'24/10 計画	'20/10 上期	'21/10 上期	'22/10 上期	'23/10 上期	'24/10 上期
売上総利益率	(%)	26.0%	27.3%	25.8%	24.2%	24.6%	13.5%	16.2%	24.3%	27.1%	27.7%	17.5%	14.1%	21.8%	26.5%	26.2%
		△0.4pt	+1.3pt	△1.5pt	△1.6pt	+0.4pt	△11.1pt	+2.7pt	+8.1pt	+2.8pt	+0.6pt	△6.1pt	△3.4pt	+7.7pt	+4.6pt	△0.3pt
営業利益率		10.4%	11.0%	8.8%	7.6%	7.0%	△5.5%	△3.2%	7.1%	9.7%	9.8%	△0.8%	△5.3%	4.1%	9.6%	9.5%
		△0.1pt	+0.6pt	△2.2pt	△1.3pt	△0.5pt	△12.5pt	+2.3pt	+10.3pt	+2.6pt	+0.1pt	△7.3pt	△4.5pt	+9.4pt	+5.5pt	△0.1pt
経常利益率		10.3%	10.9%	8.7%	7.5%	6.8%	△5.6%	△4.6%	5.8%	8.4%	8.7%	△1.4%	△7.4%	2.9%	7.3%	8.5%
		△0.1pt	+0.5pt	△2.2pt	△1.2pt	△0.8pt	△12.4pt	+1.0pt	+10.5pt	+2.5pt	+0.3pt	△7.6pt	△6.0pt	+10.3pt	+4.4pt	+1.2pt
当期純利益率		6.4%	7.2%	5.8%	4.6%	3.9%	△17.3%	△4.6%	0.9%	5.3%	5.6%	△1.8%	△7.4%	△0.5%	5.1%	5.1%
		+0.2pt	+0.8pt	△1.4pt	△1.1pt	△0.8pt	△21.2pt	+12.7pt	+5.5pt	+4.5pt	+0.3pt	△5.4pt	△5.6pt	+6.9pt	+5.5pt	+0.0pt
EBITDA比率		21.9%	22.3%	19.6%	17.8%	17.6%	9.2%	10.6%	18.0%	19.2%	18.8%	13.0%	8.5%	15.7%	19.5%	19.0%
		+0.1pt	+0.5pt	△2.7pt	△1.8pt	△0.2pt	△8.4pt	+1.5pt	+7.3pt	+1.3pt	△0.5pt	△4.0pt	△4.5pt	+7.2pt	+3.8pt	△0.5pt

03.販売費及び一般管理費

(下段：前年同期比)

		'15/10	'16/10	'17/10	'18/10	'19/10	'20/10	'21/10	'22/10	'23/10	'24/10 計画	'20/10 上期	'21/10 上期	'22/10 上期	'23/10 上期	'24/10 上期
合計	(百万円)	27,975	31,595	39,683	49,743	55,770	51,045	48,732	49,921	57,639	63,950	26,787	23,725	24,128	26,517	29,397
		105.4%	112.9%	125.6%	125.4%	112.1%	91.5%	95.5%	102.4%	115.5%	110.9%	101.1%	88.6%	101.7%	109.9%	110.9%
役員報酬		345	432	589	589	709	460	444	423	643	700	328	278	291	331	351
		96.5%	125.4%	136.2%	100.0%	120.3%	64.9%	96.6%	95.2%	152.0%	108.8%	93.3%	84.8%	104.9%	113.4%	106.1%
人件費		14,638	15,966	19,030	24,415	28,016	24,528	24,901	26,230	30,438	34,500	13,003	12,364	12,669	13,953	15,623
		107.8%	109.1%	119.2%	128.3%	114.8%	87.5%	101.5%	105.3%	116.0%	113.3%	96.4%	95.1%	102.5%	110.1%	112.0%
広告宣伝費		1,744	1,838	2,068	2,341	2,978	1,600	1,292	1,201	1,706	2,000	1,000	631	598	564	1,131
		100.8%	105.4%	112.5%	113.2%	127.2%	53.7%	80.8%	92.9%	142.0%	117.2%	83.3%	63.1%	94.7%	94.4%	200.4%
旅費交通費		711	800	939	1,207	1,214	931	878	935	1,147	1,200	534	454	423	549	609
		107.3%	112.4%	117.4%	128.6%	100.6%	76.7%	94.4%	106.5%	122.6%	104.6%	91.9%	85.0%	93.3%	129.6%	110.9%
支払手数料		2,477	3,630	5,587	4,950	5,532	6,113	7,609	7,060	8,968	10,000	3,358	2,757	3,606	3,967	4,449
		102.8%	146.5%	153.9%	88.6%	111.8%	110.5%	124.5%	92.8%	127.0%	111.5%	138.4%	82.1%	130.8%	110.0%	112.1%
地代家賃		2,089	2,152	2,465	2,973	3,148	2,652	2,679	2,538	2,574	2,800	1,328	1,385	1,252	1,267	1,530
		106.2%	103.0%	114.6%	120.6%	105.9%	84.2%	101.0%	94.7%	101.4%	108.8%	89.9%	104.2%	90.5%	101.2%	120.7%
減価償却費(契約関連無形資産 除く)		879	935	1,168	1,301	1,771	2,442	2,812	2,610	2,805	3,000	1,158	1,364	1,282	1,360	1,557
		111.0%	106.4%	124.9%	111.4%	136.1%	137.9%	115.1%	92.8%	107.5%	106.9%	163.7%	117.8%	94.0%	106.1%	114.4%
租税公課		781	1,078	1,650	1,901	1,987	1,838	455	582	648	700	983	1,001	298	393	273
		111.6%	138.0%	152.9%	115.3%	104.5%	92.5%	24.8%	127.9%	111.3%	107.9%	96.4%	101.8%	29.8%	131.9%	69.7%
のれん等償却額(契約関連無形資産 含む)		153	153	805	3,314	3,038	2,797	1,506	1,636	1,887	1,900	1,413	734	785	854	902
		43.1%	100.0%	524.0%	411.7%	91.7%	92.1%	53.8%	108.6%	115.3%	100.7%	90.2%	52.0%	106.9%	108.8%	105.6%
その他		4,154	4,606	5,377	6,747	7,372	7,681	6,152	6,700	6,819	7,150	3,677	2,754	2,919	3,274	2,969
		104.4%	110.9%	116.7%	125.5%	109.3%	104.2%	80.1%	108.9%	101.8%	104.8%	100.1%	74.9%	106.0%	112.2%	90.7%

04.連結貸借対照表

		'15/10	'16/10	'17/10	'18/10	'19/10	'20/10	'21/10	'22/10	'23/10	'24/10 計画	'20/10 上期	'21/10 上期	'22/10 上期	'23/10 上期	'24/10 上期
資産合計	(百万円)	145,462	152,939	259,852	283,171	293,097	295,775	319,628	307,626	308,157	300,000	317,326	336,110	309,382	310,419	310,816
		107.5%	105.1%	169.9%	109.0%	103.5%	100.9%	108.1%	96.2%	100.2%	97.4%	108.3%	113.6%	96.8%	100.9%	100.9%
流動資産		40,928	42,022	59,097	72,311	74,611	101,260	139,183	137,814	133,335	118,900	75,767	144,990	130,605	140,920	128,611
		116.4%	102.7%	140.8%	122.4%	103.2%	135.7%	137.5%	99.0%	96.7%	89.2%	101.5%	143.2%	93.8%	102.3%	96.5%
うち、現金及び預金		20,079	19,477	18,152	30,081	24,881	55,536	92,044	85,781	73,957	55,900	31,408	100,104	83,135	85,614	68,115
		127.8%	97.0%	93.2%	165.7%	82.7%	223.2%	165.7%	93.2%	86.2%	75.6%	126.2%	180.2%	90.3%	99.8%	92.1%
固定資産		104,533	110,916	200,755	210,859	218,485	194,514	180,445	169,513	174,647	181,000	241,559	191,119	178,417	169,262	182,091
		104.4%	106.1%	181.0%	105.0%	103.6%	89.0%	92.8%	93.9%	103.0%	103.6%	110.6%	98.3%	98.9%	99.9%	104.3%
うち、モビリティ車両		31,301	35,613	42,066	50,193	53,728	36,317	31,031	27,009	30,632	32,400	49,503	32,297	28,623	28,483	33,903
		113.6%	113.8%	118.1%	119.3%	107.0%	67.6%	85.4%	87.0%	113.4%	105.8%	92.1%	88.9%	92.2%	105.5%	110.7%
うち、のれん(契約関連無形資産含む)		540	386	64,452	60,480	51,117	25,469	26,202	27,601	24,662	22,700	49,128	27,425	27,731	26,786	24,642
		77.9%	71.6%	16671.2%	93.8%	84.5%	49.8%	102.9%	105.3%	89.4%	92.0%	96.1%	107.7%	105.8%	97.0%	99.9%
繰延資産		-	-	-	-	-	-	-	297	174	100	-	-	359	236	113
		-	-	-	-	-	-	-	-	58.6%	57.3%	-	-	-	79.3%	64.7%
負債合計		79,580	79,668	181,047	188,324	202,305	264,629	303,195	267,584	249,741	222,000	243,287	316,190	270,590	260,826	242,540
		106.0%	100.1%	227.3%	104.0%	107.4%	130.8%	114.6%	88.3%	93.3%	88.9%	120.3%	119.5%	89.2%	97.5%	97.1%
流動負債		33,219	33,357	114,043	63,907	71,222	90,428	117,910	100,687	103,922	88,000	84,682	119,706	101,497	98,351	93,835
		102.9%	100.4%	341.9%	56.0%	111.4%	127.0%	130.4%	85.4%	103.2%	84.7%	118.9%	132.4%	86.1%	97.7%	90.3%
固定負債		46,360	46,310	67,004	124,416	131,082	174,201	185,285	166,897	145,818	134,000	158,605	196,484	169,092	162,475	148,705
		108.2%	99.9%	144.7%	185.7%	105.4%	132.9%	106.4%	90.1%	87.4%	91.9%	121.0%	112.8%	91.3%	97.4%	102.0%
純資産合計		65,882	73,270	78,804	94,847	90,791	31,146	16,432	40,042	58,416	78,000	74,039	19,919	38,792	49,592	68,275
		109.5%	111.2%	107.6%	120.4%	95.7%	34.3%	52.8%	243.7%	145.9%	133.5%	81.5%	64.0%	236.1%	123.9%	116.9%
うち、株主資本		66,520	74,461	78,748	96,573	97,511	36,761	25,175	52,758	70,301	90,200	81,029	27,873	49,651	60,738	79,446
		109.0%	111.9%	105.8%	122.6%	101.0%	37.7%	68.5%	209.6%	133.2%	128.3%	83.1%	75.8%	197.2%	115.1%	113.0%
有利子負債	(百万円)	51,208	48,939	121,637	124,284	139,380	205,219	228,294	194,915	170,724	139,000	185,194	250,328	202,326	183,522	162,643
		110.2%	95.6%	248.5%	102.2%	112.1%	147.2%	111.2%	85.4%	87.6%	81.4%	132.9%	122.0%	88.6%	94.2%	95.3%
新株予約権付転換社債		21,000	19,970	19,970	35,000	35,000	35,000	35,000	35,000	42,310	42,310	35,000	35,000	35,000	42,310	42,310
		100.0%	95.1%	100.0%	175.3%	100.0%	100.0%	100.0%	100.0%	120.9%	100.0%	100.0%	100.0%	100.0%	120.9%	100.0%
銀行借入		18,593	17,081	84,466	73,404	88,777	126,513	158,557	129,709	99,616	70,400	103,460	174,115	134,628	114,006	87,754
		137.5%	91.9%	494.5%	86.9%	120.9%	142.5%	81.8%	76.8%	70.7%	70.7%	116.5%	137.6%	84.9%	87.9%	88.1%
うち、劣後特約付シンジケートローン		-	-	-	-	-	-	50,000	50,000	50,000	50,000	-	50,000	50,000	50,000	50,000
		-	-	-	-	-	-	-	100.0%	100.0%	100.0%	-	-	100.0%	100.0%	100.0%
リース債務		11,614	11,887	17,200	15,880	15,603	43,706	34,737	30,205	28,797	26,290	46,734	41,213	32,698	27,206	32,579
		97.3%	102.4%	144.7%	92.3%	98.3%	280.1%	79.5%	87.0%	95.3%	91.3%	299.5%	94.3%	94.1%	90.1%	113.1%
株主資本比率	(%)	45.7%	48.7%	30.3%	34.1%	33.3%	12.4%	7.9%	17.2%	22.8%	30.1%	25.5%	8.3%	16.0%	19.6%	25.6%
		+0.6pt	+3.0pt	△18.4pt	+3.8pt	△0.8pt	△20.8pt	△4.6pt	+9.3pt	+5.7pt	+7.3pt	△7.7pt	△4.1pt	+8.2pt	+2.4pt	+2.7pt
ネットD/Eレシオ*	(倍)	0.47	0.40	1.31	0.98	1.17	4.07	5.41	2.07	1.38	0.92	1.90	5.39	2.40	1.61	1.19
		△0.04	△0.07	+0.92	△0.34	+0.20	+2.90	+1.34	△3.34	△0.69	△0.46	+0.72	+1.32	△3.01	△0.46	△0.19

* ネットD/Eレシオ：(有利子負債-現金及び預金)/株主資本

05.キャッシュ・フロー計算書

(下段：前年同期比)

		'15/10	'16/10	'17/10	'18/10	'19/10	'20/10	'21/10	'22/10	'23/10	'24/10 計画	'20/10 上期	'21/10 上期	'22/10 上期	'23/10 上期	'24/10 上期
営業活動によるキャッシュ・フロー	(百万円)	35,155	39,627	38,290	53,476	45,695	39,400	34,818	29,369	48,188	55,000	22,594	15,654	4,985	24,353	28,467
		106.2%	112.7%	96.6%	139.7%	85.4%	86.2%	88.4%	84.4%	164.1%	114.1%	93.3%	69.3%	31.8%	488.5%	116.9%
投資活動によるキャッシュ・フロー		△24,627	△27,148	△72,769	△43,095	△49,454	△21,819	△12,349	△17,357	△25,661	△32,000	△13,163	△7,437	△7,535	△10,111	△14,638
財務活動によるキャッシュ・フロー		△6,162	△13,036	32,570	1,754	△782	12,886	13,167	△20,116	△35,633	△41,000	△2,883	35,292	△7,414	△14,600	△20,362
現金及び現金同等物期末残高		20,063	19,461	17,775	29,785	24,664	55,269	91,795	85,065	73,299	55,200	31,152	99,844	82,872	84,805	67,425
		127.9%	97.0%	91.3%	167.6%	82.8%	224.1%	166.1%	92.7%	86.2%	75.3%	102.4%	320.5%	83.0%	102.3%	79.5%
フリーキャッシュ・フロー		10,527	12,479	△34,478	10,380	△3,758	17,580	22,468	12,012	22,527	23,000	9,430	8,216	△2,550	14,241	13,828
		103.5%	118.5%	-	-	-	-	127.8%	53.5%	187.5%	102.1%	-	87.1%	-	-	97.1%

06.指標

(下段：前年同期比・差)

		'15/10	'16/10	'17/10	'18/10	'19/10	'20/10	'21/10	'22/10	'23/10	'24/10 計画	'20/10 上期	'21/10 上期	'22/10 上期	'23/10 上期	'24/10 上期
株主資本当期純利益率(ROE)	(%)	18.1%	19.8%	17.5%	15.8%	12.7%	△69.5%	△37.6%	6.4%	28.5%	24.9%	△2.9%	△27.7%	△1.7%	14.1%	12.0%
		+0.3pt	+1.7pt	△2.3pt	△1.7pt	△3.1pt	△82.2pt	+31.8pt	+44.0pt	+22.2pt	△3.6pt	△8.9pt	△24.8pt	+26.0pt	+15.7pt	△2.0pt
投下資本利益率(ROIC*)	(%)	10.7%	11.9%	8.8%	7.4%	6.8%	△4.3%	△2.3%	5.7%	9.1%	10.3%	△0.3%	△1.7%	1.5%	4.3%	4.8%
		+0.3pt	+1.2pt	△3.2pt	△1.4pt	△0.6pt	△11.0pt	+2.0pt	+8.0pt	+3.4pt	+1.2pt	△3.4pt	△1.4pt	+3.3pt	+2.7pt	+0.5pt
総資産当期純利益率(ROA)	(%)	8.2%	9.4%	6.5%	5.1%	4.3%	△15.8%	△3.8%	0.8%	5.7%	6.6%	△0.8%	△2.8%	△0.2%	2.6%	2.9%
		+0.3pt	+1.1pt	△2.8pt	△1.4pt	△0.8pt	△20.1pt	+12.1pt	+4.6pt	+4.9pt	+0.9pt	△2.8pt	△2.0pt	+2.6pt	+2.8pt	+0.3pt
一株当たり当期純利益(EPS)	(円)	79.45	95.75	91.67	91.88	79.79	△302.00	△75.45	15.22	102.87	117.23	△16.77	△57.99	△4.06	46.80	52.83
		110.9%	120.5%	95.7%	100.2%	86.8%	-	-	-	675.8%	114.0%	-	-	-	-	112.9%
一株当たり純資産(BPS)	(円)	449.33	497.87	532.39	610.01	585.37	200.55	105.93	234.46	342.28	458.97	476.40	128.49	226.42	290.47	399.93
		109.1%	110.8%	106.9%	114.6%	96.0%	34.3%	52.8%	221.3%	146.0%	134.1%	83.7%	27.0%	176.2%	128.3%	137.7%
株価収益率(PER)	(倍)	32.02	33.89	28.57	32.34	32.07	△4.66	△23.07	130.40	16.44	-	△103.06	△36.40	△457.59	44.70	32.22
		137.0%	105.8%	84.3%	113.2%	99.2%	-	-	-	12.6%	-	-	-	-	-	72.1%
株価純資産倍率(PBR)	(倍)	5.66	6.52	4.92	4.87	4.37	7.02	16.43	8.47	4.94	-	3.63	16.43	8.21	7.20	4.26
		139.2%	115.1%	75.5%	99.0%	89.8%	160.6%	234.1%	51.5%	58.4%	-	88.5%	453.0%	50.0%	87.7%	59.1%
配当金	(円)	55.0	65.0	70.0	70.0	70.0	0.0	0.0	0.0	0.0	5.0	-	-	-	-	-
		110.0%	118.2%	107.7%	100.0%	100.0%	0.0%	-	-	-	-	-	-	-	-	-
配当性向	(%)	69.2%	67.9%	76.4%	76.2%	87.7%	0.0%	0.0%	0.0%	0.0%	4.3%	-	-	-	-	-
		△0.5pt	△1.3pt	+8.5pt	△0.2pt	+11.5pt	△87.7pt	-	-	-	-	-	-	-	-	-
株主資本配当率(DOE*)	(%)	12.5%	13.5%	13.4%	12.3%	11.1%	0.0%	0.0%	0.0%	0.0%	1.1%	-	-	-	-	-
		+0.1pt	+1.0pt	△0.1pt	△1.1pt	△1.2pt	△11.1pt	-	-	-	+1.1pt	-	-	-	-	-

*ROIC：営業利益×(1-法定実効税率)／(有利子負債+株主資本)

*DOE：配当総額／株主資本

07.従業員数

(下段：前期末比・差)

		'15/10	'16/10	'17/10	'18/10	'19/10	'20/10	'21/10	'22/10	'23/10	'20/10 上期	'21/10 上期	'22/10 上期	'23/10 上期	'24/10 上期
合計	(人)	2,248	2,448	4,577	4,899	5,490	5,565	5,029	4,970	5,234	5,870	5,211	4,953	5,146	5,444
		111.8%	108.9%	187.0%	107.0%	112.1%	101.4%	90.4%	98.8%	105.3%	106.9%	93.6%	98.5%	103.5%	104.0%
国内従業員数		2,248	2,448	2,716	3,084	3,476	3,802	3,573	3,492	3,623	3,851	3,685	3,528	3,606	3,811
		111.8%	108.9%	110.9%	113.5%	112.7%	109.4%	94.0%	97.7%	103.8%	110.8%	96.9%	98.7%	103.3%	105.2%
駐車場営業人員数		445	440	478	501	569	598	529	451	467	632	547	467	460	490
		110.1%	98.9%	108.6%	104.8%	113.6%	105.1%	88.5%	85.3%	103.5%	111.1%	91.5%	88.3%	102.0%	104.9%
その他		1,803	2,008	2,238	2,583	2,907	3,204	3,044	3,041	3,156	3,219	3,138	3,061	3,146	3,321
		112.3%	111.4%	111.5%	115.4%	112.5%	110.2%	95.0%	99.9%	103.8%	110.7%	97.9%	100.6%	103.5%	105.2%
海外従業員数		-	-	1,861	1,815	2,014	1,763	1,456	1,478	1,611	2,019	1,526	1,425	1,540	1,633
		-	-	-	97.5%	111.0%	87.5%	82.6%	101.5%	109.0%	100.2%	86.6%	97.9%	104.2%	101.4%

08.設備投資

(下段：前年同期比)

		'15/10	'16/10	'17/10	'18/10	'19/10	'20/10	'21/10	'22/10	'23/10	'24/10 計画	'20/10 上期	'21/10 上期	'22/10 上期	'23/10 上期	'24/10 上期
合計	(百万円)	27,932	30,266	38,470	46,564	54,270	31,845	20,344	21,772	36,607	41,700	21,571	8,740	8,434	15,421	23,804
		107.4%	108.4%	127.1%	121.0%	116.5%	58.7%	63.9%	107.0%	168.1%	113.9%	81.3%	40.5%	96.5%	182.8%	154.4%
駐車場事業国内		8,388	9,698	11,107	10,333	11,042	6,521	2,458	3,072	9,233	15,300	4,982	1,438	1,251	3,809	6,268
		88.3%	115.6%	114.5%	93.0%	106.9%	59.1%	37.7%	124.9%	300.5%	165.7%	107.2%	28.9%	87.0%	304.3%	164.6%
モビリティ事業		18,214	19,401	22,984	27,332	30,779	11,988	9,388	10,430	16,523	12,700	7,135	4,041	4,379	5,034	6,153
		116.4%	106.5%	118.5%	118.9%	112.6%	39.0%	78.3%	111.1%	158.4%	76.9%	58.1%	56.6%	108.4%	115.0%	122.2%
駐車場事業海外		-	-	1,477	4,333	3,500	10,936	6,922	7,060	8,346	10,200	8,010	2,269	2,122	5,552	9,595
		-	-	-	293.2%	80.8%	312.5%	63.3%	102.0%	118.2%	122.2%	505.7%	28.3%	93.5%	261.6%	172.8%
その他		1,328	1,165	2,899	4,565	8,948	2,398	1,575	1,209	2,504	3,500	1,442	991	680	1,024	1,786
		155.2%	87.7%	248.8%	157.4%	196.0%	26.8%	65.7%	76.8%	207.1%	139.8%	18.0%	68.7%	68.7%	150.4%	174.5%

[再掲] 設備投資-項目別・事業別

(下段：前年同期比)

		'15/10	'16/10	'17/10	'18/10	'19/10	'20/10	'21/10	'22/10	'23/10	'24/10 計画	'20/10 上期	'21/10 上期	'22/10 上期	'23/10 上期	'24/10 上期
合計	(百万円)	27,932	30,266	38,470	46,564	54,270	31,845	20,344	21,772	36,607	41,700	21,571	8,740	8,434	15,421	23,804
		107.4%	108.4%	127.1%	121.0%	116.5%	58.7%	63.9%	107.0%	168.1%	113.9%	81.3%	40.5%	96.5%	182.8%	154.4%
キャッシュベース		24,290	26,041	33,598	42,328	48,920	21,880	15,516	17,084	29,141	31,900	13,588	7,404	7,378	10,855	13,984
		113.8%	107.2%	129.0%	126.0%	115.6%	44.7%	70.9%	110.1%	170.6%	109.5%	55.6%	54.5%	99.6%	147.1%	128.8%
駐車場事業国内		4,746	5,476	6,542	6,565	5,962	3,736	1,691	2,528	6,259	10,000	2,702	978	1,021	2,936	4,227
		93.2%	115.4%	119.5%	100.4%	90.8%	62.7%	45.3%	149.5%	247.5%	159.8%	102.8%	36.2%	104.4%	287.4%	144.0%
モビリティ事業		18,214	19,399	22,984	27,332	30,779	11,988	9,388	10,430	16,523	12,700	7,135	4,041	4,379	5,034	6,153
		118.3%	106.5%	118.5%	118.9%	112.6%	39.0%	78.3%	111.1%	158.4%	76.9%	58.1%	56.6%	108.4%	115.0%	122.2%
駐車場事業海外		-	-	1,171	3,865	3,230	3,756	2,861	2,915	3,854	5,700	2,307	1,393	1,296	1,860	1,816
		-	-	-	330.1%	83.6%	116.3%	76.2%	101.9%	132.2%	147.9%	155.8%	60.4%	93.0%	143.5%	97.6%
その他		1,328	1,165	2,899	4,565	8,948	2,398	1,575	1,209	2,504	3,500	1,442	991	680	1,024	1,786
		155.2%	87.7%	248.8%	157.4%	196.0%	26.8%	65.7%	76.8%	207.1%	139.8%	18.0%	68.7%	68.7%	150.4%	174.5%
ファイナンスリース		3,641	4,225	4,871	4,235	5,349	9,965	4,827	4,688	7,466	9,800	7,982	1,335	1,056	4,565	9,819
		78.2%	116.0%	115.3%	86.9%	126.3%	186.3%	48.4%	97.1%	159.3%	131.3%	375.9%	16.7%	79.1%	432.3%	215.1%
駐車場事業国内		3,641	4,222	4,565	3,767	5,079	2,785	767	543	2,974	5,300	2,280	460	229	873	2,041
		82.6%	116.0%	108.1%	82.5%	134.8%	54.8%	27.5%	70.9%	547.3%	178.2%	112.9%	20.2%	49.9%	379.8%	233.8%
モビリティ事業		-	2	-	-	-	-	-	-	-	-	-	-	-	-	-
		-	-	-	-	-	-	-	-	-	-	-	-	-	-	-
駐車場事業海外		-	-	306	467	270	7,180	4,060	4,144	4,492	4,500	5,702	875	826	3,692	7,778
		-	-	-	152.5%	57.7%	2658.1%	56.6%	102.1%	108.4%	100.2%	5523.3%	15.4%	94.4%	446.8%	210.6%
その他		-	-	-	-	-	-	-	-	-	-	-	-	-	-	-
		-	-	-	-	-	-	-	-	-	-	-	-	-	-	-

09.減価償却費(契約関連無形資産除く)

(下段：前年同期比)

		'15/10	'16/10	'17/10	'18/10	'19/10	'20/10	'21/10	'22/10	'23/10	'24/10 計画	'20/10 上期	'21/10 上期	'22/10 上期	'23/10 上期	'24/10 上期
合計	(百万円)	20,383	21,779	24,418	27,322	30,407	37,129	33,286	29,851	29,629	30,100	18,807	16,159	15,006	14,662	15,822
		110.4%	106.9%	112.1%	111.9%	111.3%	122.1%	89.7%	89.7%	99.3%	101.6%	127.1%	85.9%	92.9%	97.7%	107.9%
駐車場事業国内		9,647	9,879	9,669	9,732	10,491	9,549	8,423	7,212	6,623	6,600	5,205	4,312	3,731	3,270	3,485
		109.7%	102.4%	97.9%	100.7%	107.8%	91.0%	88.2%	85.6%	91.8%	99.6%	102.1%	82.8%	86.5%	87.6%	106.6%
モビリティ事業		10,117	11,259	12,800	14,148	15,662	14,306	11,205	9,779	8,846	8,400	7,520	5,743	4,971	4,437	4,445
		110.7%	111.3%	113.7%	110.5%	110.7%	91.3%	78.3%	87.3%	90.5%	95.0%	99.4%	76.4%	86.6%	89.3%	100.2%
駐車場事業海外		-	-	1,246	2,673	3,123	11,234	11,277	10,904	12,160	12,900	5,470	4,997	5,340	5,982	6,727
		-	-	-	214.5%	116.8%	359.7%	100.4%	96.7%	111.5%	106.1%	320.6%	91.3%	106.9%	112.0%	112.5%
その他		618	640	701	767	1,130	2,037	2,381	1,954	1,997	2,200	611	1,105	963	972	1,163
		114.8%	103.6%	109.6%	109.4%	147.3%	180.2%	116.8%	82.1%	102.2%	110.1%	144.3%	180.9%	87.1%	101.0%	119.6%

10.セグメントデータ

10-1.セグメント別業績

(下段：前年同期比)

	'15/10	'16/10	'17/10	'18/10	'19/10	'20/10	'21/10	'22/10	'23/10	'24/10 計画	'20/10 上期	'21/10 上期	'22/10 上期	'23/10 上期	'24/10 上期	
売上高	(百万円)	179,698	194,398	232,956	298,517	317,438	268,904	251,102	290,253	330,123	357,000	145,679	121,865	135,891	157,078	175,875
		107.6%	108.2%	119.8%	128.1%	106.3%	84.7%	93.4%	115.6%	113.7%	108.1%	94.5%	83.7%	111.5%	115.6%	112.0%
駐車場事業国内		134,266	142,142	148,399	157,006	165,997	150,757	146,744	154,292	163,056	170,400	79,147	73,220	75,018	79,191	85,626
		105.3%	105.9%	104.4%	105.8%	105.7%	90.8%	97.3%	105.1%	105.7%	104.5%	98.0%	92.5%	102.5%	105.6%	108.1%
モビリティ事業		45,431	52,255	61,060	73,747	86,174	73,819	67,142	78,711	98,816	109,000	36,755	31,646	35,570	45,566	52,022
		115.0%	115.0%	116.8%	120.8%	116.9%	85.7%	91.0%	117.2%	125.5%	110.3%	90.6%	86.1%	112.4%	128.1%	114.2%
駐車場事業海外		-	-	23,671	68,290	65,976	45,169	38,498	57,983	69,478	78,600	30,193	17,514	25,641	32,775	38,464
		-	-	-	288.5%	96.6%	68.5%	85.2%	150.6%	119.8%	113.1%	91.3%	58.0%	146.4%	127.8%	117.4%
UK		-	-	-	36,119	35,915	21,340	15,976	29,966	37,568	42,300	16,011	6,071	13,165	16,868	20,653
		-	-	-	-	99.4%	59.4%	74.9%	187.6%	125.4%	112.6%	90.7%	37.9%	216.8%	128.1%	122.4%
AU		-	-	18,076	24,139	22,003	15,894	14,475	17,380	19,562	22,900	10,064	7,138	7,438	9,892	10,890
		-	-	-	133.5%	91.1%	72.2%	91.1%	120.1%	112.6%	117.1%	88.1%	70.9%	104.2%	133.0%	110.1%
TW		-	-	2,524	3,046	3,359	3,872	4,229	5,798	7,223	8,550	1,869	2,360	2,838	3,481	4,272
		-	-	-	120.7%	110.3%	115.3%	109.2%	137.1%	124.6%	118.4%	113.5%	126.3%	120.3%	122.6%	122.7%
その他		-	-	3,070	4,983	4,698	4,061	3,817	4,839	5,124	4,850	2,248	1,944	2,199	2,532	2,648
		-	-	-	162.3%	94.3%	86.4%	94.0%	126.8%	105.9%	94.6%	95.0%	86.5%	113.1%	115.1%	104.6%
調整額		-	-	△174	△526	△709	△842	△1,283	△734	△1,228	△1,000	△417	△515	△338	△454	△237
		-	-	-	-	-	-	-	-	-	-	-	-	-	-	-
売上総利益 又は損失(△)		46,706	53,048	60,188	72,283	78,092	36,347	40,693	70,593	89,626	98,950	25,557	17,209	29,684	41,614	46,051
		105.9%	113.6%	113.5%	120.1%	108.0%	46.5%	112.0%	173.5%	127.0%	110.4%	70.1%	67.3%	172.5%	140.2%	110.7%
駐車場事業国内		32,575	35,649	36,803	38,612	40,169	22,839	28,705	40,036	44,046	45,000	12,102	12,370	18,124	20,669	22,689
		100.9%	109.4%	103.2%	104.9%	104.0%	56.9%	125.7%	139.5%	110.0%	102.2%	62.4%	102.2%	146.5%	114.0%	109.8%
モビリティ事業		14,130	17,398	19,743	25,128	30,221	18,966	19,324	26,744	38,093	43,950	11,055	9,051	10,907	17,643	20,031
		119.6%	123.1%	113.5%	127.3%	120.3%	62.8%	101.9%	138.4%	142.4%	115.4%	84.9%	81.9%	120.5%	161.8%	113.5%
駐車場事業海外		-	-	3,661	8,752	7,999	△5,134	△6,988	4,156	7,965	10,300	2,564	△4,049	809	3,521	3,482
		-	-	-	239.1%	91.4%	-	-	-	191.6%	129.3%	61.3%	-	-	435.3%	98.9%
UK		-	-	-	3,755	3,973	△6,936	△10,076	△240	2,327	3,400	493	△5,883	△1,133	505	587
		-	-	-	-	105.8%	-	-	-	-	146.1%	25.8%	-	-	-	116.1%
AU		-	-	2,142	3,082	2,574	322	1,683	2,223	2,718	3,700	1,387	788	768	1,615	1,141
		-	-	-	143.9%	83.5%	12.5%	521.2%	132.1%	122.3%	136.1%	97.7%	56.8%	97.5%	210.2%	70.7%
TW		-	-	552	636	694	804	640	1,149	1,798	2,100	372	663	682	885	1,119
		-	-	-	115.2%	109.1%	115.9%	79.6%	179.4%	156.5%	116.8%	111.1%	178.3%	102.9%	129.6%	126.5%
その他		-	-	966	1,278	757	674	764	1,025	1,120	1,100	311	381	490	515	633
		-	-	-	132.2%	59.3%	89.1%	113.3%	134.1%	109.3%	98.2%	60.3%	122.5%	128.6%	105.0%	123.0%
調整額(本社コスト等)		-	-	△19	△210	△297	△323	△348	△344	△478	△300	△164	△163	△156	△219	△151
		-	-	-	-	-	-	-	-	-	-	-	-	-	-	-

(下段：前年同期比)

		'15/10	'16/10	'17/10	'18/10	'19/10	'20/10	'21/10	'22/10	'23/10	'24/10 計画	'20/10 上期	'21/10 上期	'22/10 上期	'23/10 上期	'24/10 上期
営業利益 又は損失(△)	(百万円)	18,730	21,453	20,505	22,539	22,322	△14,698	△8,039	20,672	31,986	35,000	△1,229	△6,515	5,556	15,097	16,654
		106.7%	114.5%	95.6%	109.9%	99.0%	-	-	-	154.7%	109.4%	-	-	-	271.7%	110.3%
駐車場事業国内		23,045	24,980	25,359	26,906	27,300	10,817	17,662	29,657	32,050	33,000	5,733	6,185	13,044	15,211	16,711
		97.6%	108.4%	101.5%	106.1%	101.5%	39.6%	163.3%	167.9%	108.1%	103.0%	42.8%	107.9%	210.9%	116.6%	109.9%
モビリティ事業		2,842	4,457	5,112	6,858	9,112	1,864	3,661	9,337	17,513	21,000	1,565	1,258	2,197	8,075	9,714
		269.7%	156.8%	114.7%	134.1%	132.9%	20.5%	196.4%	255.0%	187.6%	119.9%	51.3%	80.4%	174.6%	367.5%	120.3%
駐車場事業海外 (のれん等償却前)		-	-	767	2,148	1,967	△11,609	△15,093	△3,412	277	800	△398	△6,919	△2,652	△30	△309
		-	-	-	280.2%	91.6%	-	-	-	-	288.0%	-	-	-	-	-
UK		-	-	△6	1,171	1,288	△10,212	△14,836	△4,283	△927	△800	△851	△7,124	△3,061	△980	△860
		-	-	-	-	57.1%	-	-	-	-	-	-	-	-	-	-
AU		-	-	321	476	271	△1,798	△479	258	285	1,200	301	△239	△161	468	△47
		-	-	-	104.8%	53.8%	-	-	-	110.3%	420.3%	88.2%	-	-	-	-
TW		-	-	152	186	238	264	22	447	1,026	1,200	112	355	362	531	669
		-	-	-	122.2%	127.7%	110.9%	8.5%	1997.8%	229.4%	116.9%	106.5%	316.6%	102.0%	146.4%	126.1%
その他		-	-	299	313	168	136	200	164	△106	△800	38	88	207	△50	△71
		-	-	-	104.8%	53.8%	81.2%	146.2%	82.1%	-	-	-	227.6%	235.6%	-	-
調整額(本社コスト等)		△7,156	△7,985	△10,733	△13,374	△16,058	△15,769	△14,269	△14,909	△17,855	△19,800	△8,128	△7,040	△7,032	△8,158	△9,461
		-	-	-	-	-	-	-	-	-	-	-	-	-	-	-

[参考] 駐車場事業海外 営業損益(のれん等償却後)

(下段：前年同期比)

		'15/10	'16/10	'17/10	'18/10	'19/10	'20/10	'21/10	'22/10	'23/10	'24/10 計画	'20/10 上期	'21/10 上期	'22/10 上期	'23/10 上期	'24/10 上期
駐車場事業海外 営業損益(のれん等償却後)		-	-	115	△879	△992	△14,406	△16,595	△5,049	△1,609	△1,100	△1,810	△7,648	△3,437	△884	△1,211
	(百万円)	-	-	-	-	-	-	-	-	-	-	-	-	-	-	-
UK		-	-	△6	△987	△847	△12,229	△15,680	△5,191	△2,030	△1,910	△1,872	△7,531	△3,503	△1,447	△1,350
		-	-	-	-	-	-	-	-	-	-	-	-	-	-	-
AU		-	-	△110	△87	△248	△2,288	△840	△136	△127	780	58	△415	△347	264	△263
		-	-	-	-	-	-	-	-	-	-	-	-	-	-	-
TW		-	-	152	186	238	264	22	447	1,026	1,200	112	355	362	531	669
		-	-	-	122.2%	127.7%	110.9%	8.5%	1997.8%	229.4%	116.9%	106.5%	316.6%	102.0%	146.4%	126.1%
その他		-	-	79	8	△135	△152	△96	△169	△477	△1,170	△108	△57	50	△232	△267
		-	-	-	10.4%	-	-	-	-	-	-	-	-	-	-	-

10-2.セグメント別収益性

(下段：前年同期差)

	'15/10	'16/10	'17/10	'18/10	'19/10	'20/10	'21/10	'22/10	'23/10	'24/10 計画	'20/10 上期	'21/10 上期	'22/10 上期	'23/10 上期	'24/10 上期
売上総利益率	26.0%	27.3%	25.8%	24.2%	24.6%	13.5%	16.2%	24.3%	27.1%	27.7%	17.5%	14.1%	21.8%	26.5%	26.2%
	Δ0.4pt	+1.3pt	Δ1.5pt	Δ1.6pt	+0.4pt	Δ11.1pt	+2.7pt	+8.1pt	+2.8pt	+0.6pt	Δ6.1pt	Δ3.4pt	+7.7pt	+4.6pt	Δ0.3pt
駐車場事業国内	24.3%	25.1%	24.8%	24.6%	24.2%	15.1%	19.6%	25.9%	27.0%	26.4%	15.3%	16.9%	24.2%	26.1%	26.5%
	Δ1.1pt	+0.8pt	Δ0.3pt	Δ0.2pt	Δ0.4pt	Δ9.0pt	+4.4pt	+6.4pt	+1.1pt	Δ0.6pt	Δ8.7pt	+1.6pt	+7.3pt	+1.9pt	+0.4pt
モビリティ事業	31.1%	33.3%	32.3%	34.1%	35.1%	25.7%	28.8%	34.0%	38.5%	40.3%	30.1%	28.6%	30.7%	38.7%	38.5%
	+1.2pt	+2.2pt	Δ1.0pt	+1.7pt	+1.0pt	Δ9.4pt	+3.1pt	+5.2pt	+4.6pt	+1.8pt	Δ2.0pt	Δ1.5pt	+2.1pt	+8.1pt	Δ0.2pt
駐車場事業海外	-	-	15.5%	12.8%	12.1%	Δ11.4%	Δ18.2%	7.2%	11.5%	13.1%	8.5%	Δ23.1%	3.2%	10.7%	9.1%
	-	-	-	Δ2.6pt	Δ0.7pt	Δ23.5pt	Δ6.8pt	+25.3pt	+4.3pt	+1.6pt	Δ4.2pt	Δ31.6pt	+26.3pt	+7.6pt	Δ1.7pt
UK	-	-	-	10.4%	11.1%	Δ32.5%	Δ63.1%	Δ0.8%	6.2%	8.0%	3.1%	Δ96.9%	Δ8.6%	3.0%	2.8%
	-	-	-	-	+0.7pt	Δ43.6pt	Δ30.6pt	+62.3pt	+7.0pt	+1.8pt	Δ7.8pt	Δ100.0pt	+88.3pt	+11.6pt	Δ0.2pt
AU	-	-	11.9%	12.8%	11.7%	2.0%	11.6%	12.8%	13.9%	16.2%	13.8%	11.0%	10.3%	16.3%	10.5%
	-	-	-	+0.9pt	Δ1.1pt	Δ9.7pt	+9.6pt	+1.2pt	+1.1pt	+2.3pt	+1.4pt	Δ2.7pt	Δ0.7pt	+6.0pt	Δ5.8pt
TW	-	-	21.9%	20.9%	20.7%	20.8%	15.1%	19.8%	24.9%	24.6%	19.9%	28.1%	24.1%	25.4%	26.2%
	-	-	-	Δ1.0pt	Δ0.2pt	+0.1pt	Δ5.6pt	+4.7pt	+5.1pt	Δ0.3pt	Δ0.4pt	+8.2pt	Δ4.1pt	+1.4pt	+0.8pt
その他	-	-	31.5%	25.6%	16.1%	16.6%	20.0%	21.2%	21.9%	22.7%	13.9%	19.6%	22.3%	20.3%	23.9%
	-	-	-	Δ5.8pt	Δ9.5pt	+0.5pt	+3.4pt	+1.2pt	+0.7pt	+0.8pt	Δ7.9pt	+5.8pt	+2.7pt	Δ2.0pt	+3.6pt
営業利益率	10.4%	11.0%	8.8%	7.6%	7.0%	Δ5.5%	Δ3.2%	7.1%	9.7%	9.8%	Δ0.8%	Δ5.3%	4.1%	9.6%	9.5%
	Δ0.1pt	+0.6pt	Δ2.2pt	Δ1.3pt	Δ0.5pt	Δ12.5pt	+2.3pt	+10.3pt	+2.6pt	+0.1pt	Δ7.3pt	Δ4.5pt	+9.4pt	+5.5pt	Δ0.1pt
駐車場事業国内	17.2%	17.6%	17.1%	17.1%	16.4%	7.2%	12.0%	19.2%	19.7%	19.4%	7.2%	8.4%	17.4%	19.2%	19.5%
	Δ1.4pt	+0.4pt	Δ0.5pt	+0.0pt	Δ0.7pt	Δ9.3pt	+4.9pt	+7.2pt	+0.4pt	Δ0.3pt	Δ9.4pt	+1.2pt	+8.9pt	+1.8pt	+0.3pt
モビリティ事業	6.3%	8.5%	8.4%	9.3%	10.6%	2.5%	5.5%	11.9%	17.7%	19.3%	4.3%	4.0%	6.2%	17.7%	18.7%
	+3.6pt	+2.3pt	Δ0.2pt	+0.9pt	+1.3pt	Δ8.0pt	+2.9pt	+6.4pt	+5.9pt	+1.5pt	Δ3.3pt	Δ0.3pt	+2.2pt	+11.5pt	+1.0pt
駐車場事業海外(のれん等償却前)	-	-	3.2%	3.1%	3.0%	Δ25.7%	Δ39.2%	Δ5.9%	0.4%	1.0%	Δ1.3%	Δ39.5%	Δ10.3%	Δ0.1%	Δ0.8%
	-	-	-	Δ0.1pt	Δ0.2pt	Δ28.7pt	Δ13.5pt	+33.3pt	+6.3pt	+0.6pt	Δ3.8pt	Δ38.2pt	+29.2pt	+10.3pt	Δ0.7pt
UK	-	-	-	3.2%	3.6%	Δ47.9%	Δ92.9%	Δ14.3%	Δ2.5%	Δ1.9%	Δ5.3%	Δ117.3%	Δ23.3%	Δ5.8%	Δ4.2%
	-	-	-	-	+0.3pt	Δ51.4pt	Δ45.0pt	+78.6pt	+11.8pt	+0.6pt	Δ7.8pt	Δ112.0pt	+94.1pt	+17.4pt	+1.6pt
AU	-	-	1.8%	2.0%	1.2%	Δ11.3%	Δ3.3%	1.5%	1.5%	5.2%	3.0%	Δ3.4%	Δ2.2%	4.7%	Δ0.4%
	-	-	-	+0.2pt	Δ0.7pt	Δ12.6pt	+8.0pt	+4.8pt	Δ0.0pt	+3.8pt	+0.0pt	Δ6.3pt	+1.2pt	+6.9pt	Δ5.2pt
TW	-	-	6.0%	6.1%	7.1%	6.8%	0.5%	7.7%	14.2%	14.0%	6.0%	15.1%	12.8%	15.3%	15.7%
	-	-	-	+0.1pt	+1.0pt	Δ0.3pt	Δ6.3pt	+7.2pt	+6.5pt	Δ0.2pt	Δ0.4pt	+9.1pt	Δ2.3pt	+2.5pt	+0.4pt
その他	-	-	9.8%	6.3%	3.6%	3.4%	5.2%	3.4%	Δ2.1%	Δ16.5%	1.7%	4.5%	9.4%	Δ2.0%	Δ2.7%
	-	-	-	Δ3.5pt	Δ2.7pt	Δ0.2pt	+1.9pt	Δ1.8pt	Δ5.5pt	Δ14.4pt	+5.1pt	+2.8pt	+4.9pt	Δ11.4pt	Δ0.7pt

[参考] 決算短信ベースのセグメント情報

(下段：前年同期比)

		'15/10	'16/10	'17/10	'18/10	'19/10	'20/10	'21/10	'22/10	'23/10	'24/10 計画	'20/10 上期	'21/10 上期	'22/10 上期	'23/10 上期	'24/10 上期
売上高	(百万円)	179,698	194,398	232,956	298,517	317,438	268,904	251,102	290,253	330,123	357,000	145,679	121,865	135,891	157,078	175,875
		107.6%	108.2%	119.8%	128.1%	106.3%	84.7%	93.4%	115.6%	113.7%	108.1%	94.5%	83.7%	111.5%	115.6%	112.0%
駐車場事業国内		134,348	140,304	148,399	157,006	165,997	155,216	150,446	158,857	167,915	175,600	81,383	75,315	77,314	81,581	88,159
		105.3%	104.4%	105.8%	105.8%	105.7%	93.5%	96.9%	105.6%	105.7%	104.6%	100.8%	92.5%	102.7%	105.5%	108.1%
モビリティ事業		45,506	52,300	61,060	73,505	85,847	73,484	66,807	78,288	98,287	109,000	36,578	31,497	35,381	45,333	52,022
		115.1%	114.9%	116.7%	120.4%	116.8%	85.6%	90.9%	117.2%	125.5%	110.9%	90.5%	86.1%	112.3%	128.1%	114.8%
駐車場事業海外		-	1,937	23,671	68,290	65,976	45,169	38,498	57,983	69,478	78,600	30,193	17,514	25,641	32,775	38,464
		-	-	1221.7%	288.5%	96.6%	68.5%	85.2%	150.6%	119.8%	113.1%	91.3%	58.0%	146.4%	127.8%	117.4%
調整額		△156	△144	△174	△285	△382	△4,966	△4,650	△4,877	△5,558	△6,200	△2,475	△2,461	△2,445	△2,611	△2,770
		-	-	-	-	-	-	-	-	-	-	-	-	-	-	-
営業利益 又は損失(△)	(百万円)	18,730	21,453	20,505	22,539	22,322	△14,698	△8,039	20,672	31,986	35,000	△1,229	△6,515	5,556	15,097	16,654
		106.7%	114.5%	95.6%	109.9%	99.0%	-	54.7%	-	154.7%	109.4%	-	530.1%	-	271.7%	110.3%
駐車場事業国内		23,044	24,899	25,359	26,906	27,300	15,276	21,364	34,222	36,909	38,200	7,968	8,280	15,340	17,601	19,243
		97.6%	108.0%	101.8%	106.1%	101.5%	56.0%	139.9%	160.2%	107.9%	103.5%	59.4%	103.9%	185.3%	114.7%	109.3%
モビリティ事業		2,843	4,457	5,112	6,858	9,112	△2,595	△41	4,772	12,655	15,800	△670	△836	△98	5,685	7,181
		269.8%	156.8%	114.7%	134.1%	132.9%	-	-	-	265.2%	124.8%	-	-	-	-	126.3%
駐車場事業海外		-	81	115	△879	△992	△14,406	△16,595	△5,049	△1,609	△1,100	△1,810	△7,649	△3,437	△884	△1,211
		-	-	141.8%	-	-	-	-	-	-	-	-	-	-	-	-
調整額		△7,156	△7,985	△10,082	△10,345	△13,098	△12,973	△12,767	△13,272	△15,968	△17,900	△6,716	△6,311	△6,247	△7,304	△8,559
		-	-	-	-	-	-	-	-	-	-	-	-	-	-	-
営業利益率	(%)	10.4%	11.0%	8.8%	7.6%	7.0%	△5.5%	△3.2%	7.1%	9.7%	9.8%	△0.8%	△5.3%	4.1%	9.6%	9.5%
		△0.1pt	+0.6pt	△2.2pt	△1.3pt	△0.5pt	△12.5pt	+2.3pt	+10.3pt	+2.6pt	+0.1pt	△7.3pt	△4.5pt	+9.4pt	+5.5pt	△0.1pt
駐車場事業国内		17.2%	17.7%	17.1%	17.1%	16.4%	9.8%	14.2%	21.5%	22.0%	21.8%	9.8%	11.0%	19.8%	21.6%	21.8%
		△1.4pt	+0.6pt	△0.7pt	+0.0pt	△0.7pt	△6.6pt	+4.4pt	+7.3pt	+0.4pt	△0.2pt	△6.8pt	+1.2pt	+8.8pt	+1.7pt	+0.3pt
モビリティ事業		6.2%	8.5%	8.4%	9.3%	10.6%	△3.5%	△0.1%	6.1%	12.9%	14.5%	△1.8%	△2.7%	△0.3%	12.5%	13.8%
		+3.6pt	+2.3pt	△0.2pt	+1.0pt	+1.3pt	△14.1pt	+3.5pt	+6.2pt	+6.8pt	+1.6pt	△9.4pt	△0.8pt	+2.4pt	+12.8pt	+1.3pt
駐車場事業海外		-	4.2%	0.5%	△1.3%	△1.5%	△31.9%	△43.1%	△8.7%	△2.3%	△1.4%	△6.0%	△43.7%	△13.4%	△2.7%	△3.1%
		-	-	△3.7pt	△1.8pt	△0.2pt	△30.4pt	△11.2pt	+34.4pt	+6.4pt	+0.9pt	△3.9pt	△37.7pt	+30.3pt	+10.7pt	△0.5pt
		-	-	-	-	-	-	-	-	-	-	-	-	-	-	-
* `20/10月期より、駐車場事業国内とモビリティ事業において、新たにセグメント間の内部取引(タイムズカーの駐車場費用)が発生しております。																
駐車場費用	(百万円)	-	-	-	-	-	4,459	3,702	4,565	4,858	5,200	2,235	2,094	2,296	2,389	2,532
		-	-	-	-	-	-	83.0%	123.3%	106.4%	107.0%	-	93.7%	109.6%	104.1%	106.0%
		-	-	-	-	-	-	-	-	-	-	-	-	-	-	-

(下段：前年同期比)

[参考] 決算短信セグメント情報とIR事業損益の組替詳細

	`24/10 上期			
	①	②	③	①+②+③
	決算短信 セグメント情報	タイムズカー 駐車場費用	のれん等 償却額	IR 事業損益
営業利益	16,654	-	-	16,654
駐車場事業国内	19,243	△2,532	-	16,711
モビリティ事業	7,181	+2,532	-	9,714
駐車場事業海外	△1,211	-	+902	△309
小計	25,213	-	+902	26,115
調整額(本社コスト・のれん等償却額等)	△8,559	-	△902	△9,461
営業外損益	△1,655	-	-	△1,655
経常利益	14,998	-	-	14,998

11. 駐車場事業データ

11-1. 駐車場件数

(下段：前期末比)

	'15/10	'16/10	'17/10	'18/10	'19/10	'20/10	'21/10	'22/10	'23/10	'24/10 計画	'20/10 上期	'21/10 上期	'22/10 上期	'23/10 上期	'24/10 上期	
件数合計	(件)	16,859	17,675	20,582	23,972	28,134	28,578	27,771	27,609	27,965	29,400	28,864	28,432	27,570	27,660	28,328
		106.7%	104.8%	116.4%	116.5%	117.4%	101.6%	97.2%	99.4%	101.3%	105.1%	102.6%	99.5%	99.3%	100.2%	101.3%
国内駐車場		16,414	17,171	18,376	21,515	25,503	25,744	25,558	25,246	25,379	26,200	26,079	25,593	25,272	25,277	25,646
		106.4%	104.6%	107.0%	117.1%	118.5%	100.9%	99.3%	98.8%	100.5%	103.2%	102.3%	99.4%	98.9%	100.1%	101.1%
直営駐車場		15,060	15,877	17,089	20,245	24,185	24,437	24,242	23,899	24,063	24,800	24,825	24,286	23,940	23,927	24,369
		107.1%	105.4%	107.6%	118.5%	119.5%	101.0%	99.2%	98.6%	100.7%	103.1%	102.6%	99.4%	98.8%	100.1%	101.3%
タイムズパーキング		14,987	15,792	16,845	17,597	18,908	18,914	17,879	17,399	17,639	18,200	19,442	18,463	17,569	17,509	17,999
		107.1%	105.4%	106.7%	104.5%	107.5%	100.0%	94.5%	97.3%	101.4%	103.2%	102.8%	97.6%	98.3%	100.6%	102.0%
タイムズのB		-	-	121	2,534	5,166	5,391	6,207	6,315	6,198	6,300	5,272	5,675	6,194	6,202	6,130
		-	-	-	2094.2%	203.9%	104.4%	115.1%	101.7%	98.1%	101.6%	102.1%	105.3%	99.8%	98.2%	98.9%
月極駐車場		1,355	1,533	1,737	1,837	2,052	2,167	2,179	2,504	2,596	2,750	2,125	2,234	2,460	2,563	2,662
		109.6%	113.1%	113.3%	105.8%	111.7%	105.6%	100.6%	114.9%	103.7%	105.9%	103.6%	103.1%	112.9%	102.4%	102.5%
タイムズパーキング併設		1,282	1,448	1,614	1,723	1,941	2,035	2,023	2,319	2,370	2,450	2,014	2,086	2,283	2,347	2,422
		109.3%	112.9%	111.5%	106.8%	112.7%	104.8%	99.4%	114.6%	102.2%	103.4%	103.8%	102.5%	112.9%	101.2%	102.2%
管理受託駐車場		1,354	1,294	1,287	1,270	1,318	1,307	1,316	1,347	1,316	1,400	1,254	1,307	1,332	1,350	1,277
		98.9%	95.6%	99.5%	98.7%	103.8%	99.2%	100.7%	102.4%	97.7%	106.4%	95.1%	100.0%	101.2%	100.2%	97.0%
時間貸駐車場		1,046	991	962	921	907	843	825	814	786	800	841	843	819	807	747
		98.6%	94.7%	97.1%	95.7%	98.5%	92.9%	97.9%	98.7%	96.6%	101.8%	92.7%	100.0%	99.3%	99.1%	95.0%
月極駐車場		345	335	367	394	458	510	539	581	581	600	460	515	564	593	582
		100.0%	97.1%	109.6%	107.4%	116.2%	111.4%	105.7%	107.8%	100.0%	103.3%	100.4%	101.0%	104.6%	102.1%	100.2%
時間貸駐車場併設		37	32	42	45	47	46	48	48	51	50	47	51	51	50	52
		100.0%	86.5%	131.3%	107.1%	104.4%	97.9%	104.3%	100.0%	106.3%	98.0%	100.0%	110.9%	106.3%	104.2%	102.0%
海外駐車場		445	504	2,206	2,457	2,631	2,834	2,213	2,363	2,586	3,200	2,785	2,839	2,298	2,383	2,682
		118.0%	113.3%	437.7%	111.4%	107.1%	107.7%	78.1%	106.8%	109.4%	123.7%	105.9%	100.2%	103.8%	100.8%	103.7%
UK		-	-	527	579	579	581	588	699	809	1,050	582	572	619	679	843
		-	-	-	109.9%	100.0%	100.3%	101.2%	118.9%	115.7%	129.8%	100.5%	98.5%	105.3%	97.1%	104.2%
AU		-	-	587	658	676	660	535	480	451	600	683	585	518	457	454
		-	-	-	112.1%	102.7%	97.6%	81.1%	89.7%	94.0%	133.0%	101.0%	88.6%	96.8%	95.2%	100.7%
TW		261	293	364	433	494	579	628	703	808	950	546	625	692	753	863
		121.4%	112.3%	124.2%	119.0%	114.1%	117.2%	108.5%	111.9%	114.9%	117.6%	110.5%	107.9%	110.2%	107.1%	106.8%
SG		-	-	346	316	296	303	352	360	372	400	304	323	357	369	365
		-	-	-	91.3%	93.7%	102.4%	116.2%	102.3%	103.3%	107.5%	102.7%	106.6%	101.4%	102.5%	98.1%
MY		-	-	110	112	108	109	110	121	146	200	108	115	112	125	157
		-	-	-	101.8%	96.4%	100.9%	100.9%	110.0%	120.7%	137.0%	100.0%	105.5%	101.8%	103.3%	107.5%
KR*		184	211	272	359	478	602	-	-	-	-	562	619	-	-	-
		113.6%	114.7%	128.9%	132.0%	133.1%	125.9%	-	-	-	-	117.6%	102.8%	-	-	-

*2021年9月15日に当社の持分法適用関連会社であるGS PARK24 CO.,LTDの全株式を譲渡

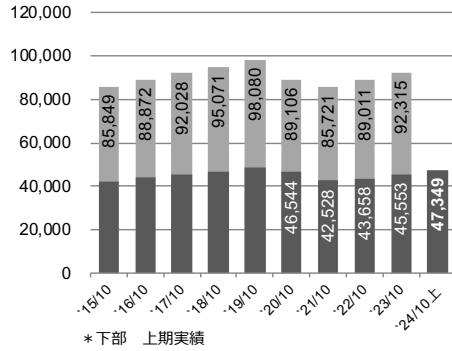
(下段：前期未比)

11-2. 駐車場台数

		'15/10	'16/10	'17/10	'18/10	'19/10	'20/10	'21/10	'22/10	'23/10	'24/10 計画	'20/10 上期	'21/10 上期	'22/10 上期	'23/10 上期	'24/10 上期
台数合計	(台)	642,943	682,207	1,231,615	1,385,694	1,441,853	1,463,673	1,337,079	1,292,759	1,299,815	1,382,500	1,485,363	1,437,114	1,311,112	1,288,948	1,327,480
		106.0%	106.1%	180.5%	112.5%	104.1%	101.5%	91.4%	96.7%	100.5%	106.4%	103.0%	98.2%	98.1%	99.7%	102.1%
国内駐車場		609,479	645,849	684,352	738,283	776,079	767,178	745,660	732,868	761,654	813,000	785,146	760,856	740,127	753,574	790,648
		105.8%	106.0%	106.0%	107.9%	105.1%	98.9%	97.2%	98.3%	103.9%	106.7%	101.2%	99.2%	99.3%	102.8%	103.8%
直営駐車場		521,836	556,844	581,897	626,245	659,772	649,163	623,607	614,217	640,806	684,400	671,825	639,093	616,303	632,625	670,760
		106.2%	106.7%	104.5%	107.6%	105.4%	98.4%	96.1%	98.5%	104.3%	106.8%	101.8%	98.4%	98.8%	103.0%	104.7%
タイムズパーキング		499,473	531,135	551,422	580,751	604,413	592,225	562,077	552,042	576,262	617,100	616,095	580,626	553,517	568,820	604,236
		106.1%	106.3%	103.8%	105.3%	104.1%	98.0%	94.9%	98.2%	104.4%	107.1%	101.9%	98.0%	98.5%	103.0%	104.9%
タイムズのB		-	-	645	13,835	20,270	21,145	24,426	24,050	24,314	24,700	20,289	21,815	24,721	24,611	24,414
		-	-	-	2145.0%	146.5%	104.3%	115.5%	98.5%	101.1%	101.6%	100.1%	103.2%	101.2%	102.3%	100.4%
月極駐車場		22,363	25,709	29,830	31,659	35,089	35,793	37,104	38,125	40,230	42,600	35,441	36,652	38,065	39,194	42,110
		108.9%	115.0%	116.0%	106.1%	110.8%	102.0%	103.7%	102.8%	105.5%	105.9%	101.0%	102.4%	102.6%	102.8%	104.7%
管理受託駐車場		87,643	89,005	102,455	112,038	116,307	118,015	122,053	118,651	120,848	128,600	113,321	121,763	123,824	120,949	119,888
		103.4%	101.6%	115.1%	109.4%	103.8%	101.5%	103.4%	97.2%	101.9%	106.4%	97.4%	103.2%	101.5%	101.9%	99.2%
時間貸駐車場		66,611	69,435	80,879	89,191	92,367	93,568	97,058	96,315	99,285	106,300	89,298	97,020	98,766	98,955	99,112
		104.5%	104.2%	116.5%	110.3%	103.6%	101.3%	103.7%	99.2%	103.1%	107.1%	96.7%	103.7%	101.8%	102.7%	99.8%
月極駐車場		21,032	19,570	21,576	22,847	23,940	24,447	24,995	22,336	21,563	22,300	24,023	24,743	25,058	21,994	20,776
		99.9%	93.0%	110.3%	105.9%	104.8%	102.1%	102.2%	89.4%	96.5%	103.4%	100.3%	101.2%	100.3%	98.5%	96.4%
海外駐車場		33,464	36,358	547,263	647,411	665,774	696,495	591,419	559,891	538,161	569,500	700,217	676,258	570,985	535,374	536,832
		109.4%	108.6%	1505.2%	118.3%	102.8%	104.6%	84.9%	94.7%	96.1%	105.8%	105.2%	97.1%	96.5%	95.6%	99.8%
UK		-	-	165,901	222,367	223,050	222,359	215,173	204,575	188,706	192,300	221,671	216,554	201,785	190,014	187,085
		-	-	-	134.0%	100.3%	99.7%	96.8%	95.1%	92.2%	101.9%	99.4%	97.4%	93.8%	92.9%	99.1%
AU		-	-	176,111	220,317	220,775	222,113	190,487	164,232	147,177	158,900	236,275	197,816	180,948	151,394	144,872
		-	-	-	125.1%	100.2%	100.6%	85.8%	86.2%	89.6%	108.0%	107.0%	89.1%	95.0%	92.2%	98.4%
TW		10,628	12,511	15,591	17,854	20,605	23,559	24,786	26,503	28,863	31,700	22,069	25,135	26,589	27,285	29,844
		111.5%	117.7%	124.6%	114.5%	115.4%	114.3%	105.2%	106.9%	108.9%	109.8%	107.1%	106.7%	107.3%	103.0%	103.4%
SG		-	-	102,365	94,301	87,306	93,292	108,143	109,204	110,530	113,700	92,990	101,210	108,910	110,368	110,039
		-	-	-	92.1%	92.6%	106.9%	115.9%	101.0%	101.2%	102.9%	106.5%	108.5%	100.7%	101.1%	99.6%
MY		-	-	60,740	59,908	52,243	54,529	52,830	55,377	62,885	72,900	51,927	54,956	52,753	56,313	64,992
		-	-	-	98.6%	87.2%	104.4%	96.9%	104.8%	113.6%	115.9%	99.4%	100.8%	99.9%	101.7%	103.4%
KR		22,836	23,847	26,555	32,664	61,795	80,643	-	-	-	-	75,285	80,587	-	-	-
		108.4%	104.4%	111.4%	123.0%	189.2%	130.5%	-	-	-	-	121.8%	99.9%	-	-	-

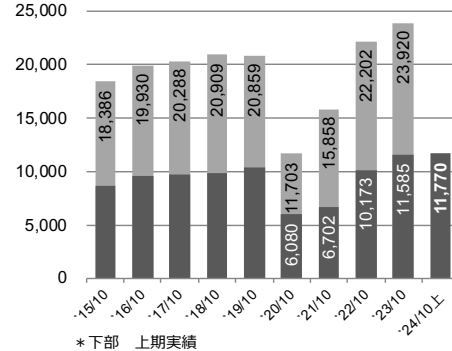
11-3.ハイライト - スタンダード

売上高 (百万円)



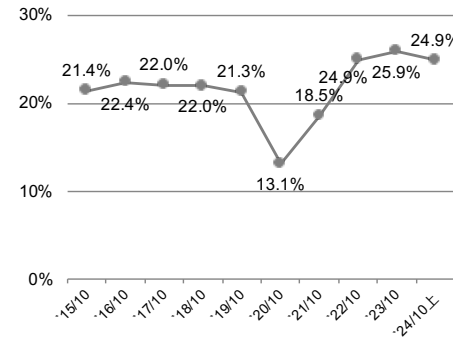
* 下部 上期実績

売上総利益 (百万円)

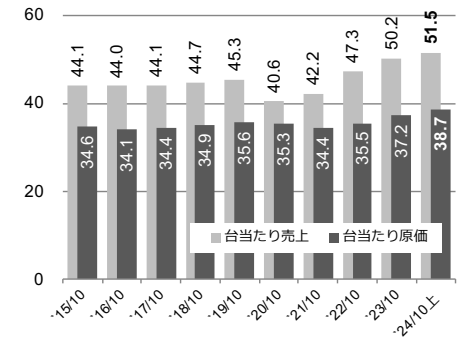


* 下部 上期実績

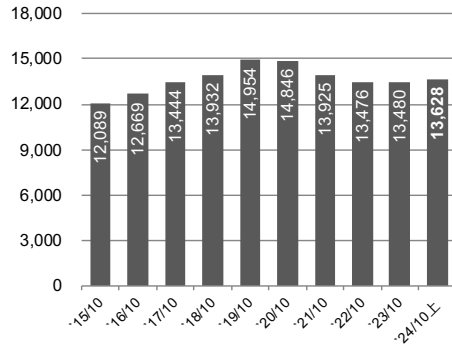
売上総利益率



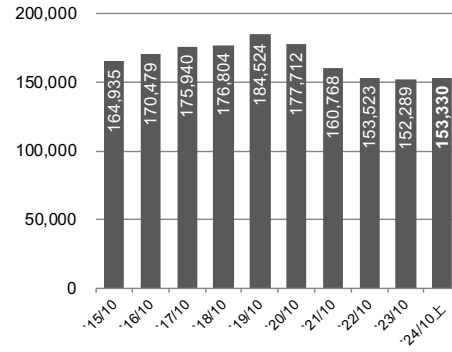
台当たり売上・原価 (千円/月)



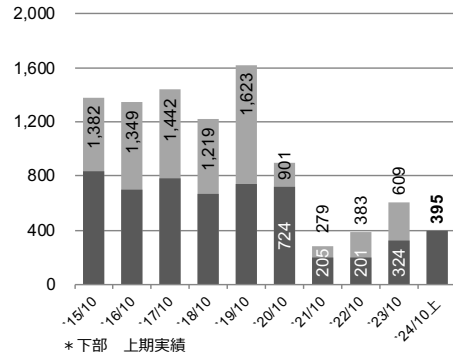
運営件数



運営台数

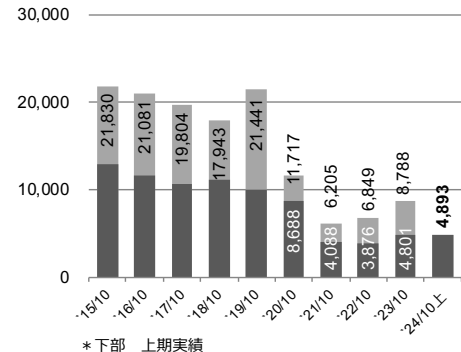


開発件数



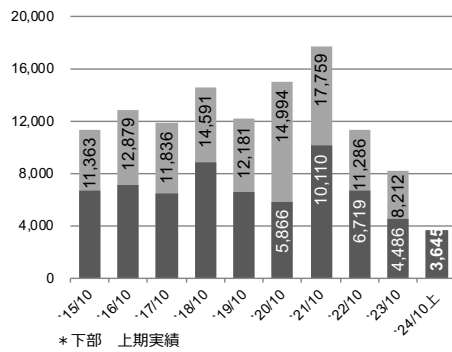
* 下部 上期実績

開発台数



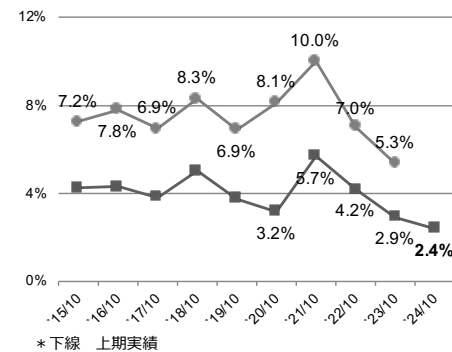
* 下部 上期実績

解約台数



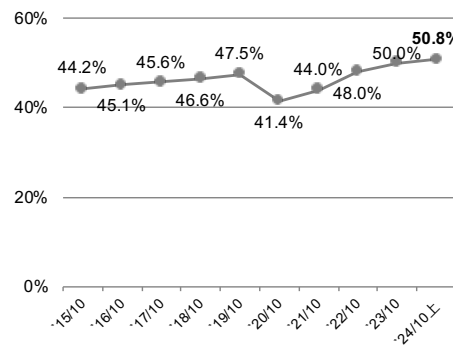
* 下部 上期実績

解約率

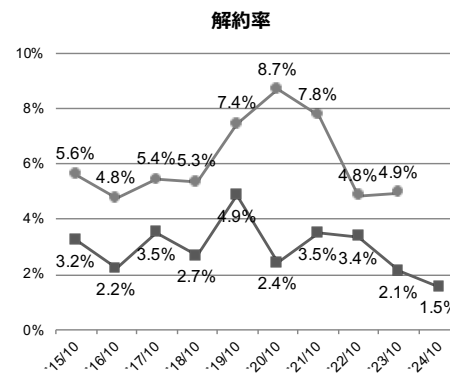
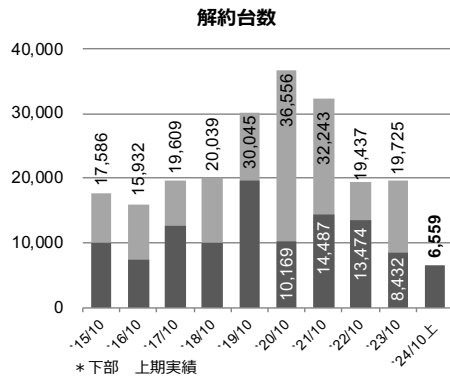
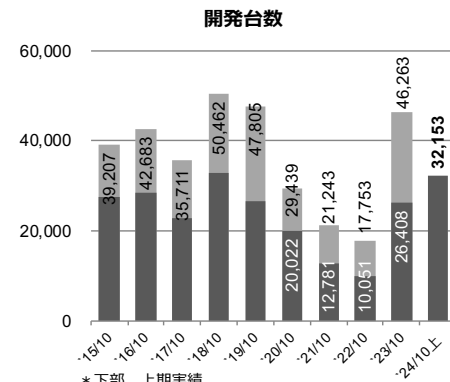
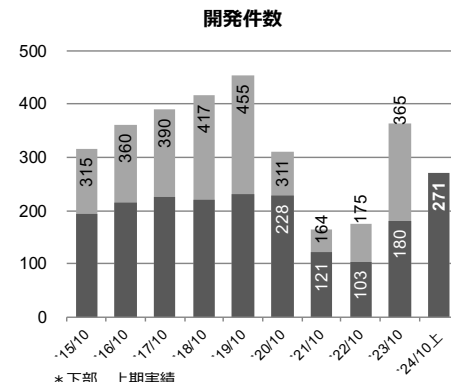
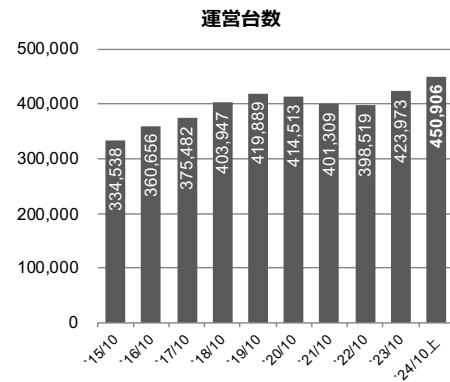
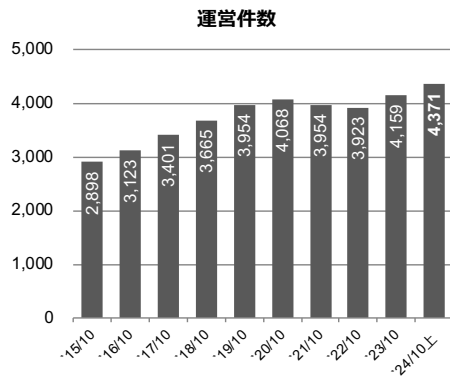
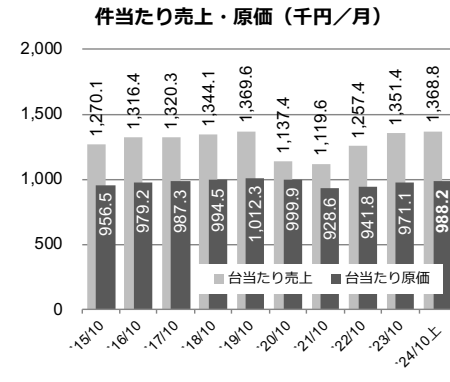
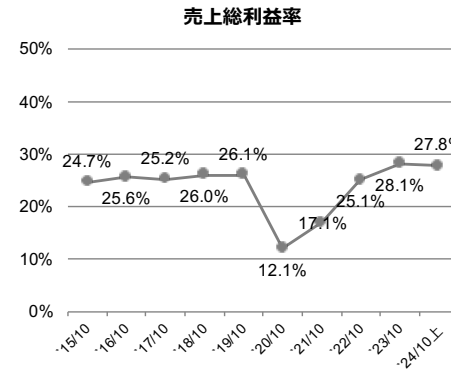
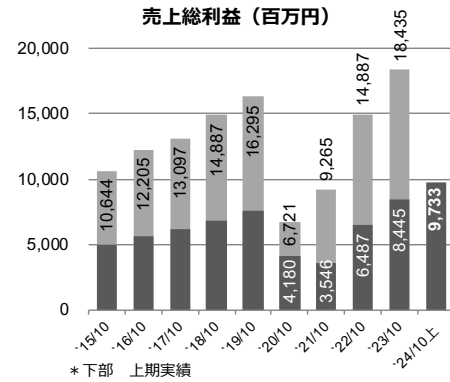
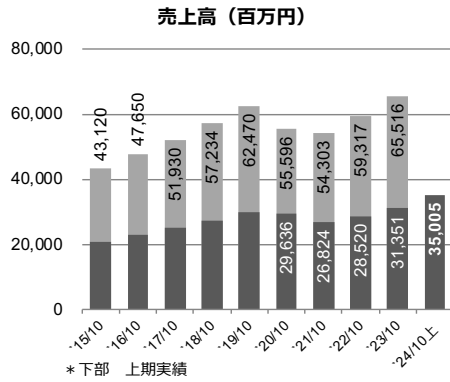


* 下線 上期実績

占有率



11-4.ハイライト - パートナーサービス



11-5. タイムズパーキング件数・台数

(件数 下段：前期末比／開発・解約・解約率 下段：前年同期比)

		'15/10	'16/10	'17/10	'18/10	'19/10	'20/10	'21/10	'22/10	'23/10	'24/10 計画	'20/10 上期	'21/10 上期	'22/10 上期	'23/10 上期	'24/10 上期
件数	(件)	14,987	15,792	16,845	17,597	18,908	18,914	17,879	17,399	17,639	18,200	19,442	18,463	17,569	17,509	17,999
		107.1%	105.4%	106.7%	104.5%	107.5%	100.0%	94.5%	97.3%	101.4%	103.2%	102.8%	97.6%	98.3%	100.6%	102.0%
開発		1,697	1,709	1,832	1,636	2,078	1,212	443	558	974	1,500	952	326	304	504	666
		85.8%	100.7%	107.2%	89.3%	127.0%	58.3%	36.6%	126.0%	174.6%	154.0%	97.5%	34.2%	93.3%	165.8%	132.1%
解約		696	898	772	873	764	1,190	1,413	977	708	900	418	759	574	379	293
		93.3%	129.0%	86.0%	113.1%	87.5%	155.8%	118.7%	69.1%	72.5%	127.1%	98.1%	181.6%	75.6%	66.0%	77.3%
区分変更+区分移動		Δ8	Δ6	Δ7	Δ11	Δ3	Δ16	Δ65	Δ61	Δ26	Δ39	-	Δ18	Δ40	Δ15	Δ13
台数	(台)	499,473	531,135	551,422	580,751	604,413	592,225	562,077	552,042	576,262	617,100	616,095	580,626	553,517	568,820	604,236
		106.1%	106.3%	103.8%	105.3%	104.1%	98.0%	94.9%	98.2%	104.4%	107.1%	101.9%	98.0%	98.5%	103.0%	104.9%
開発		61,037	63,764	55,515	68,405	69,246	41,156	27,448	24,602	55,051	76,400	28,710	16,869	13,927	31,209	37,046
		81.8%	104.5%	87.1%	123.2%	101.2%	59.4%	66.7%	89.6%	223.8%	138.8%	78.3%	58.8%	82.6%	224.1%	118.7%
解約		28,949	28,811	31,445	34,630	42,226	51,550	50,002	30,723	27,937	32,500	16,035	24,597	20,193	12,918	10,204
		92.2%	99.5%	109.1%	110.1%	121.9%	122.1%	97.0%	61.4%	90.9%	116.3%	61.0%	153.4%	82.1%	64.0%	79.0%
区分変更+区分移動		Δ3,290	Δ3,291	Δ3,783	Δ4,446	Δ3,358	Δ1,794	Δ7,594	Δ3,914	Δ2,894	Δ3,062	Δ993	Δ3,871	Δ2,294	Δ1,513	1,132
解約率	(%)	6.2%	5.8%	5.9%	6.3%	7.3%	8.5%	8.4%	5.5%	5.1%	5.6%	2.7%	4.2%	3.6%	2.3%	1.8%
		Δ1.1pt	Δ0.4pt	+0.2pt	+0.4pt	+1.0pt	+1.3pt	Δ0.1pt	Δ3.0pt	Δ0.4pt	+0.6pt	Δ1.9pt	+1.5pt	Δ0.6pt	Δ1.3pt	Δ0.6pt

11-6. タイムズパーキング - スタンダード件数・台数

(件数 下段：前期末比／開発・解約・解約率 下段：前年同期比)

		'15/10	'16/10	'17/10	'18/10	'19/10	'20/10	'21/10	'22/10	'23/10	'24/10 計画	'20/10 上期	'21/10 上期	'22/10 上期	'23/10 上期	'24/10 上期
件数	(件)	12,089	12,669	13,444	13,932	14,954	14,846	13,925	13,476	13,480	13,700	15,334	14,415	13,643	13,476	13,628
		107.3%	104.8%	106.1%	103.6%	107.3%	99.3%	93.8%	96.8%	100.0%	101.6%	102.5%	97.1%	98.0%	100.0%	101.1%
開発		1,382	1,349	1,442	1,219	1,623	901	279	383	609	1,000	724	205	201	324	395
		86.1%	97.6%	106.9%	84.5%	133.1%	55.5%	31.0%	137.3%	159.0%	164.2%	97.1%	28.3%	98.0%	161.2%	121.9%
解約		556	770	670	735	615	1,000	1,152	784	596	750	345	624	450	317	238
		88.7%	138.5%	87.0%	109.7%	83.7%	162.6%	115.2%	68.1%	76.0%	125.8%	101.8%	180.9%	72.1%	70.4%	75.1%
区分変更+区分移動		Δ2	1	3	4	14	Δ9	Δ48	Δ48	Δ9	Δ30	1	Δ12	Δ33	Δ7	Δ9
台数	(台)	164,935	170,479	175,940	176,804	184,524	177,712	160,768	153,523	152,289	152,900	184,071	168,874	156,387	152,931	153,330
		105.0%	103.4%	103.2%	100.5%	104.4%	96.3%	90.5%	95.5%	99.2%	100.4%	99.8%	95.0%	97.3%	99.6%	100.7%
開発		21,830	21,081	19,804	17,943	21,441	11,717	6,205	6,849	8,788	13,000	8,688	4,088	3,876	4,801	4,893
		74.7%	96.6%	93.9%	90.6%	119.5%	54.6%	53.0%	110.4%	128.3%	147.9%	86.0%	47.1%	94.8%	123.9%	101.9%
解約		11,363	12,879	11,836	14,591	12,181	14,994	17,759	11,286	8,212	10,500	5,866	10,110	6,719	4,486	3,645
		78.2%	113.3%	91.9%	123.3%	83.5%	123.1%	118.4%	63.6%	72.8%	127.9%	88.7%	172.3%	66.5%	66.8%	81.3%
区分変更+区分移動		Δ2,551	Δ2,658	Δ2,507	Δ2,488	Δ1,540	Δ3,535	Δ5,390	Δ2,808	Δ1,810	Δ1,889	Δ3,275	Δ2,816	Δ1,538	Δ907	Δ207
解約率	(%)	7.2%	7.8%	6.9%	8.3%	6.9%	8.1%	10.0%	7.0%	5.3%	6.9%	3.2%	5.7%	4.2%	2.9%	2.4%
		Δ2.8pt	+0.6pt	Δ0.9pt	+1.4pt	Δ1.4pt	+1.2pt	+1.9pt	Δ3.0pt	Δ1.7pt	+1.5pt	Δ0.6pt	+2.5pt	Δ1.5pt	Δ1.3pt	Δ0.5pt

11-7.タイムズパーキング - パートナーサービス件数・台数

(件台数 下段：前期末比／開発・解約・解約率 下段：前年同期比)

		'15/10	'16/10	'17/10	'18/10	'19/10	'20/10	'21/10	'22/10	'23/10	'24/10 計画	'20/10 上期	'21/10 上期	'22/10 上期	'23/10 上期	'24/10 上期
件数	(件)	2,898	3,123	3,401	3,665	3,954	4,068	3,954	3,923	4,159	4,500	4,108	4,048	3,926	4,033	4,371
		106.2%	107.8%	108.9%	107.8%	107.9%	102.9%	97.2%	99.2%	106.0%	108.2%	103.9%	99.5%	99.3%	102.8%	105.1%
開発		315	360	390	417	455	311	164	175	365	500	228	121	103	180	271
		84.7%	114.3%	108.3%	106.9%	109.1%	68.4%	52.7%	106.7%	208.6%	137.0%	99.1%	53.1%	85.1%	174.8%	150.6%
解約		140	128	102	138	149	190	261	193	112	150	73	135	124	62	55
		117.6%	91.4%	79.7%	135.3%	108.0%	127.5%	137.4%	73.9%	58.0%	133.9%	83.9%	184.9%	91.9%	50.0%	88.7%
区分変更+区分移動		△6	△7	△10	△15	△17	△7	△17	△13	△17	△9	△1	△6	△7	△8	△4
台数	(台)	334,538	360,656	375,482	403,947	419,889	414,513	401,309	398,519	423,973	464,200	432,024	411,752	397,130	415,889	450,906
		106.7%	107.8%	104.1%	107.6%	103.9%	98.7%	96.8%	99.3%	106.4%	109.5%	102.9%	99.3%	99.0%	104.4%	106.4%
開発		39,207	42,683	35,711	50,462	47,805	29,439	21,243	17,753	46,263	63,400	20,022	12,781	10,051	26,408	32,153
		86.4%	108.9%	83.7%	141.3%	94.7%	61.6%	72.2%	83.6%	260.6%	137.0%	75.4%	63.8%	78.6%	262.7%	121.8%
解約		17,586	15,932	19,609	20,039	30,045	36,556	32,243	19,437	19,725	22,000	10,169	14,487	13,474	8,432	6,559
		104.3%	90.6%	123.1%	102.2%	149.9%	121.7%	88.2%	60.3%	101.5%	111.5%	51.7%	142.5%	93.0%	62.6%	77.8%
区分変更+区分移動		△739	△633	△1,276	△1,958	△1,818	1,741	△2,204	△1,106	△1,084	△1,173	2,282	△1,055	△756	△606	1,339
解約率	(%)	5.6%	4.8%	5.4%	5.3%	7.4%	8.7%	7.8%	4.8%	4.9%	5.2%	2.4%	3.5%	3.4%	2.1%	1.5%
		△0.3pt	△0.8pt	+0.7pt	△0.1pt	+2.1pt	+1.3pt	△0.9pt	△2.9pt	+0.1pt	+0.2pt	△2.4pt	+1.1pt	△0.1pt	△1.2pt	△0.6pt

11-8.タイムズパーキング - 解約理由内訳

(下段：構成比)

		'15/10	'16/10	'17/10	'18/10	'19/10	'20/10	'21/10	'22/10	'23/10	'24/10 計画	'20/10 上期	'21/10 上期	'22/10 上期	'23/10 上期	'24/10 上期
合計	(件)	696	898	772	873	764	1,190	1,413	977	708	900	418	759	574	379	324
建築		320	394	386	377	359	314	291	330	318	400	170	136	145	165	120
		46.0%	43.9%	50.0%	43.2%	47.0%	26.4%	20.6%	33.8%	44.9%	44.4%	40.7%	17.9%	25.3%	43.5%	37.0%
売却		83	72	93	80	77	84	103	115	106	130	53	49	64	52	48
		11.9%	8.0%	12.0%	9.2%	10.1%	7.1%	7.3%	11.8%	15.0%	14.4%	12.7%	6.5%	11.1%	13.7%	14.8%
競合(同業他社への乗り換え)		78	175	132	135	107	151	117	127	92	120	88	54	73	56	44
		11.2%	19.5%	17.1%	15.5%	14.0%	12.7%	8.3%	13.0%	13.0%	13.3%	21.1%	7.1%	12.7%	14.8%	13.6%
当社都合(赤字による解約)		55	68	38	40	44	433	612	177	20	30	16	362	140	12	1
		7.9%	7.6%	4.9%	4.6%	5.8%	36.4%	43.3%	18.1%	2.8%	3.3%	3.8%	47.7%	24.4%	3.2%	0.3%
その他		160	189	123	241	177	208	290	228	172	220	91	158	152	94	111
		23.0%	21.0%	15.9%	27.6%	23.2%	17.5%	20.5%	23.3%	24.3%	24.4%	21.8%	20.8%	26.5%	24.8%	34.3%

11-9.タイムズパーキング - スタンダード占有率

(下段：前年同期差)

		'15/10	'16/10	'17/10	'18/10	'19/10	'20/10	'21/10	'22/10	'23/10	'20/10 上期	'21/10 上期	'22/10 上期	'23/10 上期	'24/10 上期
占有率	(%)	44.2%	45.1%	45.6%	46.6%	47.5%	41.4%	44.0%	48.0%	50.0%	42.6%	43.6%	47.5%	49.8%	50.8%
		+0.5pt	+0.9pt	+0.5pt	+0.9pt	+0.9pt	△6.1pt	+2.6pt	+4.0pt	+2.0pt	△5.1pt	+1.0pt	+3.9pt	+2.4pt	+1.0pt

11-10.タイムズパーキング - 非連結業績

(下段：前年同期比・差)

		'15/10	'16/10	'17/10	'18/10	'19/10	'20/10	'21/10	'22/10	'23/10	'24/10 計画	'20/10 上期	'21/10 上期	'22/10 上期	'23/10 上期	'24/10 上期
売上高	(百万円)	128,970	136,522	143,959	152,305	160,550	144,703	140,025	148,328	157,831	165,400	76,181	69,353	72,178	76,904	82,354
		105.4%	105.9%	105.4%	105.8%	105.4%	90.1%	96.8%	105.9%	106.4%	104.8%	97.4%	91.0%	104.1%	106.5%	107.1%
スタンダード		85,849	88,872	92,028	95,071	98,080	89,106	85,721	89,011	92,315	95,000	46,544	42,528	43,658	45,553	47,349
		104.7%	103.5%	103.6%	103.3%	103.2%	90.9%	96.2%	103.8%	103.7%	102.9%	96.3%	91.4%	102.7%	104.3%	103.9%
パートナーサービス		43,120	47,650	51,930	57,234	62,470	55,596	54,303	59,317	65,516	70,400	29,636	26,824	28,520	31,351	35,005
		107.0%	110.5%	109.0%	110.2%	109.1%	89.0%	97.7%	109.2%	110.5%	107.5%	99.2%	90.5%	106.3%	109.9%	111.7%
売上原価		99,939	104,387	110,573	116,508	123,395	126,278	114,901	111,238	115,475	122,800	65,920	59,104	55,518	56,873	60,850
		106.8%	104.5%	105.9%	105.4%	105.9%	102.3%	91.0%	96.8%	103.8%	106.3%	109.6%	89.7%	93.9%	102.4%	107.0%
スタンダード		67,463	68,942	71,740	74,161	77,220	77,403	69,863	66,809	68,394	72,000	40,464	35,826	33,484	33,967	35,578
		106.8%	102.2%	104.1%	103.4%	104.1%	100.2%	90.3%	95.6%	102.4%	105.3%	106.7%	88.5%	93.5%	101.4%	104.7%
パートナーサービス		32,475	35,445	38,832	42,347	46,174	48,874	45,038	44,429	47,080	50,800	25,455	23,278	22,033	22,905	25,271
		106.8%	109.1%	109.6%	109.0%	109.0%	105.8%	92.2%	98.6%	106.0%	107.9%	114.4%	91.4%	94.7%	104.0%	110.3%
売上総利益		29,031	32,135	33,385	35,797	37,155	18,424	25,123	37,089	42,356	42,600	10,261	10,248	16,660	20,030	21,504
		101.0%	110.7%	103.9%	107.2%	103.8%	49.6%	136.4%	147.6%	114.2%	100.6%	56.9%	99.9%	162.6%	120.2%	107.4%
スタンダード		18,386	19,930	20,288	20,909	20,859	11,703	15,858	22,202	23,920	23,000	6,080	6,702	10,173	11,585	11,770
		97.6%	108.4%	101.8%	103.1%	99.8%	56.1%	135.5%	140.0%	107.7%	96.2%	58.3%	110.2%	151.8%	113.9%	101.6%
パートナーサービス		10,644	12,205	13,097	14,887	16,295	6,721	9,265	14,887	18,435	19,600	4,180	3,546	6,487	8,445	9,733
		107.5%	114.7%	107.3%	113.7%	109.5%	41.2%	137.8%	160.7%	123.8%	106.3%	54.8%	84.8%	182.9%	130.2%	115.2%
売上総利益率	(%)	22.5%	23.5%	23.2%	23.5%	23.1%	12.7%	17.9%	25.0%	26.8%	25.8%	13.5%	14.8%	23.1%	26.0%	26.1%
		△1.0pt	+1.0pt	△0.3pt	+0.3pt	△0.4pt	△10.4pt	+5.2pt	+7.1pt	+1.8pt	△1.1pt	△9.6pt	+1.3pt	+7.1pt	+3.0pt	+0.1pt
スタンダード		21.4%	22.4%	22.0%	22.0%	21.3%	13.1%	18.5%	24.9%	25.9%	24.2%	13.1%	15.8%	23.3%	25.4%	24.9%
		△1.6pt	+1.0pt	△0.4pt	△0.1pt	△0.7pt	△8.1pt	+5.4pt	+6.4pt	+1.0pt	△1.7pt	△8.5pt	+2.7pt	+7.5pt	+2.1pt	△0.6pt
パートナーサービス		24.7%	25.6%	25.2%	26.0%	26.1%	12.1%	17.1%	25.1%	28.1%	27.8%	14.1%	13.2%	22.7%	26.9%	27.8%
		+0.1pt	+0.9pt	△0.4pt	+0.8pt	+0.1pt	△14.0pt	+5.0pt	+8.0pt	+3.0pt	△0.3pt	△11.4pt	△0.9pt	+9.5pt	+4.2pt	+0.9pt

11-11.タイムズパーキング - 台/件・月当たり売上高・売上総利益

(下段：前年同期比)

		'15/10	'16/10	'17/10	'18/10	'19/10	'20/10	'21/10	'22/10	'23/10	'24/10 計画	'20/10 上期	'21/10 上期	'22/10 上期	'23/10 上期	'24/10 上期
スタンダード	売上高 (千円/台・月)	44.1	44.0	44.1	44.7	45.3	40.6	42.2	47.3	50.2	51.8	42.2	40.6	45.9	49.4	51.5
		97.8%	99.9%	100.2%	101.3%	101.3%	89.6%	103.9%	112.2%	106.2%	103.2%	93.6%	96.2%	112.9%	107.7%	104.2%
	売上原価	34.6	34.1	34.4	34.9	35.6	35.3	34.4	35.5	37.2	39.3	36.7	34.2	35.2	36.8	38.7
		99.8%	98.6%	100.7%	101.4%	102.2%	98.9%	97.5%	103.3%	104.8%	105.5%	103.7%	93.2%	102.8%	104.7%	105.0%
	売上総利益	9.4	9.8	9.7	9.8	9.6	5.3	7.8	11.8	13.0	12.5	5.5	6.4	10.6	12.5	12.8
		91.2%	104.5%	98.5%	101.1%	97.9%	55.4%	146.3%	151.2%	110.3%	96.4%	56.7%	116.0%	167.0%	117.6%	101.9%
パートナーサービス	売上高 (千円/件・月)	1,270.1	1,316.4	1,320.3	1,344.1	1,369.6	1,137.4	1,119.6	1,257.4	1,351.4	1,353.8	1,221.0	1,096.3	1,206.6	1,311.0	1,368.8
		99.0%	103.6%	100.3%	101.8%	101.9%	83.1%	98.4%	112.3%	107.5%	100.2%	91.4%	89.8%	110.1%	108.7%	104.4%
	売上原価	956.5	979.2	987.3	994.5	1,012.3	999.9	928.6	941.8	971.1	976.9	1,048.7	951.4	932.1	957.8	988.2
		98.9%	102.4%	100.8%	100.7%	101.8%	98.8%	92.9%	101.4%	103.1%	100.6%	105.4%	90.7%	98.0%	102.8%	103.2%
	売上総利益	313.5	337.1	333.0	349.6	357.2	137.5	191.0	315.6	380.2	376.9	172.2	144.9	274.4	353.1	380.6
		99.5%	107.5%	98.8%	105.0%	102.2%	38.5%	138.9%	165.2%	120.5%	99.1%	50.5%	84.2%	189.4%	128.7%	107.8%

12.モビリティ事業データ

12-1.タイムズカー車両数・拠点数

(下段：前期末比)

		'15/10	'16/10	'17/10	'18/10	'19/10	'20/10	'21/10	'22/10	'23/10	'24/10 計画	'20/10 上期	'21/10 上期	'22/10 上期	'23/10 上期	'24/10 上期
貸出拠点数	(箇所)	7,772	9,031	10,504	11,717	13,024	13,443	13,397	14,132	16,017	18,000	13,445	13,087	13,698	15,027	18,091
		121.9%	116.2%	116.3%	111.5%	111.2%	103.2%	99.7%	105.5%	113.3%	112.4%	103.2%	97.4%	102.2%	106.3%	112.9%
車両数	(台)	39,020	42,943	48,989	54,593	57,716	44,841	52,552	53,062	60,047	67,800	55,585	46,086	52,083	56,590	64,363
		107.4%	110.1%	114.1%	111.4%	105.7%	77.7%	117.2%	101.0%	113.2%	112.9%	96.3%	102.8%	99.1%	106.6%	107.2%
うち、タイムズカー専用車両	(台)							37,816	36,954	42,174	48,200		31,349	36,821	39,106	46,756
								-	97.7%	114.1%	114.3%		-	97.4%	105.8%	110.9%

12-2.タイムズカー会員数

(下段：前期末比・差)

		'15/10	'16/10	'17/10	'18/10	'19/10	'20/10	'21/10	'22/10	'23/10	'24/10 計画	'20/10 上期	'21/10 上期	'22/10 上期	'23/10 上期	'24/10 上期
会員数	(千人)	549.0	719.4	903.5	1,099.1	1,305.3	1,506.7	1,725.0	2,040.6	2,423.8	2,900.0	1,386.8	1,585.1	1,845.2	2,181.4	2,693.0
		132.3%	131.0%	125.6%	121.6%	118.8%	115.4%	114.5%	118.3%	118.8%	119.6%	106.2%	105.2%	107.0%	106.9%	111.1%
個人		348.4	447.5	551.1	667.9	777.6	892.6	1,024.8	1,231.0	1,494.8	1,800.0	816.8	933.7	1,097.7	1,328.3	1,686.0
		130.2%	128.4%	123.1%	121.2%	116.4%	114.8%	114.8%	120.1%	121.4%	120.4%	105.0%	104.6%	107.1%	107.9%	112.8%
法人		200.5	271.8	352.4	431.2	527.6	614.1	700.1	809.6	928.9	1,100.0	569.9	651.4	747.5	853.1	1,007.0
		136.1%	135.5%	129.6%	122.4%	122.4%	116.4%	114.0%	115.6%	114.7%	118.4%	108.0%	106.1%	106.8%	105.4%	108.4%
法人会員比率	(%)	36.5%	37.8%	39.0%	39.2%	40.4%	40.8%	40.6%	39.7%	38.3%	37.9%	41.1%	41.1%	40.5%	39.1%	37.4%
		+1.0pt	+1.3pt	+1.2pt	+0.2pt	+1.2pt	+0.3pt	△0.2pt	△0.9pt	△1.3pt	△0.4pt	+0.7pt	+0.3pt	△0.1pt	△0.6pt	△0.9pt

12-3.台・月当たり売上高・利益 (直営のみ)

(下段：前年同期比)

		'15/10	'16/10	'17/10	'18/10	'19/10	'20/10	'21/10	'22/10	'23/10	'24/10 計画	'20/10 上期	'21/10 上期	'22/10 上期	'23/10 上期	'24/10 上期
タイムズカー 売上高	(千円/台・月)	110.1	113.4	116.0	123.0	127.1	122.0	118.2	127.8	150.0	144.2	107.9	117.0	116.1	145.1	144.2
		104.2%	103.0%	102.4%	106.0%	103.3%	96.0%	96.9%	108.1%	117.3%	96.2%	86.6%	108.5%	99.2%	125.0%	99.4%
営業費用		102.0	101.8	104.6	110.5	112.7	119.6	113.1	113.3	123.2	116.0	103.7	113.7	110.3	119.2	116.0
		98.4%	99.8%	102.8%	105.6%	102.0%	106.2%	94.6%	100.1%	108.7%	94.1%	90.6%	109.7%	97.0%	108.1%	97.3%
営業利益		8.1	11.5	11.4	12.5	14.4	2.3	5.0	14.5	26.7	28.2	4.2	3.3	5.8	25.9	28.1
		413.9%	143.0%	98.3%	109.8%	115.0%	16.1%	219.9%	285.5%	184.2%	105.5%	41.5%	79.2%	174.4%	444.1%	108.8%

【参考】グループ内取引の駐車場費用を算入した場合の台・月当たり利益

(下段：前年同期比)

		'15/10	'16/10	'17/10	'18/10	'19/10	'20/10	'21/10	'22/10	'23/10	'24/10 計画	'20/10 上期	'21/10 上期	'22/10 上期	'23/10 上期	'24/10 上期
タイムズカー 営業利益	(千円/台・月)	-	-	-	-	7.7	△5.9	△2.2	6.3	18.7	20.7	△3.1	△5.4	△2.5	17.6	20.5
		-	-	-	-	-	-	-	-	294.5%	110.7%	-	169.7%	46.4%	-	116.8%

【再掲】車両売却・処分 売上高・利益

(下段：前年同期比)

		'15/10	'16/10	'17/10	'18/10	'19/10	'20/10	'21/10	'22/10	'23/10	'24/10 計画	'20/10 上期	'21/10 上期	'22/10 上期	'23/10 上期	'24/10 上期
売上高	(百万円)	-	-	-	7,464	10,542	13,305	8,408	8,044	10,002	3,700	-	-	-	5,558	3,065
		-	-	-	-	141.2%	126.2%	63.2%	95.7%	124.3%	37.0%	-	-	-	-	55.1%
営業利益		-	-	-	1,743	2,842	1,123	1,109	2,830	3,753	150	-	-	-	2,483	871
		-	-	-	-	163.0%	39.5%	98.8%	255.2%	132.6%	4.0%	-	-	-	-	35.1%

【再掲】タイムズカー 内訳

		(下段：前年同期比)						(下段：前年同期比)
		`15/10	`16/10	`17/10	`18/10	`19/10	`20/10	`20/10 上期
レンタカー	売上高 (千円/台・月)	116.5	120.9	125.9	131.9	138.0	145.6	114.6
		106.7%	103.8%	104.1%	104.8%	104.6%	105.5%	84.3%
	営業費用	109.1	113.4	118.9	126.1	132.3	170.5	124.1
		102.8%	103.9%	104.9%	106.0%	104.9%	128.9%	90.8%
	営業利益	7.4	7.5	6.9	5.8	5.7	△24.8	△9.5
		241.4%	102.1%	92.0%	83.4%	98.8%	-	1365.0%
カーシェア	売上高	102.2	104.9	105.9	113.7	115.7	106.9	102.3
		102.5%	102.6%	100.9%	107.4%	101.8%	92.4%	90.6%
	営業費用	93.3	88.8	89.9	94.1	92.3	87.3	86.6
		93.7%	95.2%	101.2%	104.7%	98.0%	94.6%	94.7%
	営業利益	8.9	16.0	16.0	19.5	23.4	19.5	15.6
		5709.6%	179.6%	99.4%	122.2%	119.6%	83.7%	73.1%

【参考】グループ内取引の駐車場費用を算入した場合の台・月当たり利益 (カーシェア)

		(下段：前年同期比)						(下段：前年同期比)
		`15/10	`16/10	`17/10	`18/10	`19/10	`20/10	`20/10 上期
カーシェア	営業利益 (千円/台・月)	-	-	-	-	9.7	6.0	2.1
		-	-	-	-	-	61.9%	27.4%

13.会員サービス

		(下段：前期末比)									(下段：前期末比)				
		`15/10	`16/10	`17/10	`18/10	`19/10	`20/10	`21/10	`22/10	`23/10	`20/10 上期	`21/10 上期	`22/10 上期	`23/10 上期	`24/10 上期
タイムズクラブ会員	(千人)	5,539.4	5,984.2	6,565.9	7,247.2	7,990.2	8,538.8	9,063.2	9,843.0	10,837.6	8,272.3	8,772.5	9,373.5	10,281.2	11,315.6
		108.0%	108.0%	109.7%	110.4%	110.3%	106.9%	106.1%	108.6%	110.1%	103.5%	102.7%	103.4%	104.5%	104.4%
タイムズビジネスカード	(千枚)	411.7	558.1	692.8	820.1	939.7	1,031.9	1,138.3	1,267.3	1,392.1	987.1	1,072.4	1,195.8	1,316.5	1,475.3
		131.9%	135.6%	124.1%	118.4%	114.6%	109.8%	110.3%	111.3%	109.9%	105.0%	103.9%	105.0%	103.9%	106.0%
タイムズペイ 加盟店舗	(店)	-	-	1,422	7,065	25,559	45,192	40,796	31,168	31,550	40,462	46,834	39,046	31,587	32,481
		-	-	-	496.8%	361.8%	176.8%	90.3%	76.4%	101.2%	158.3%	103.6%	95.7%	101.3%	103.0%

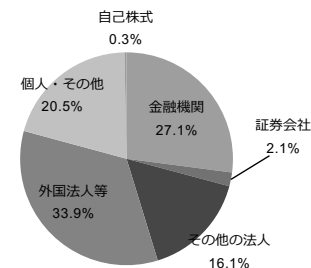
14.株主データ

`23/10月期 上期

■所有者

	株式数(千株)	構成比	人数(人)	構成比
合計	171,048	100.0%	40,587	100.0%
政府・地方公共団体	-	-	-	-
金融機関	46,295	27.1%	32	0.1%
証券会社	3,583	2.1%	38	0.1%
その他の法人	27,542	16.1%	274	0.7%
うち、証券保管振替機構	12	0.0%	1	0.0%
外国法人等	58,067	33.9%	362	0.9%
うち、個人	10	0.0%	58	0.1%
個人・その他	35,032	20.5%	39,880	98.3%
自己株式	528	0.3%	1	0.0%

■株式数構成比



■大株主の状況

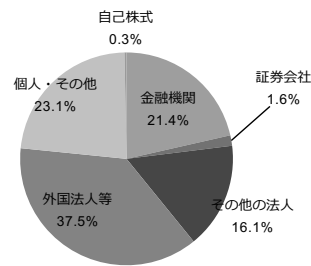
順位	株主氏名	株式数(千株)	持株比率
1	日本マスタートラスト信託銀行株式会社(信託口)	23,767	13.9%
2	有限会社千寿	21,746	12.7%
3	株式会社日本カストディ銀行(信託口)	13,165	7.7%
4	西川 光一	8,110	4.7%
5	西川 功	6,194	3.6%
6	GOVERNMENT OF NORWAY	3,930	2.3%
7	日本信号株式会社	3,853	2.3%
8	MSIP CLIENT SECURITIES	3,558	2.1%
9	西川 恭子	3,200	1.9%
10	浅井 千寿	2,558	1.5%
合計		90,084	52.7%

`23/10月期 通期

■所有者

	株式数(千株)	構成比	人数(人)	構成比
合計	171,048	100.0%	47,415	100.0%
政府・地方公共団体	-	-	-	-
金融機関	36,686	21.4%	30	0.1%
証券会社	2,709	1.6%	47	0.1%
その他の法人	27,555	16.1%	314	0.7%
うち、証券保管振替機構	12	0.0%	1	0.0%
外国法人等	64,072	37.5%	396	0.8%
うち、個人	20	0.0%	80	0.2%
個人・その他	39,496	23.1%	46,627	98.3%
自己株式	528	0.3%	1	0.0%

■株式数構成比



■大株主の状況

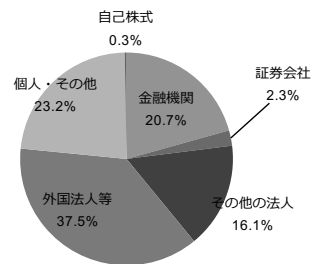
順位	株主氏名	株式数(千株)	持株比率
1	有限会社千寿	21,746	12.7%
2	日本マスタートラスト信託銀行株式会社(信託口)	19,952	11.7%
3	株式会社日本カストディ銀行(信託口)	8,513	5.0%
4	西川 光一	8,110	4.7%
5	西川 功	6,194	3.6%
6	BNY GCM CLIENT ACCOUNT JPRD AC ISG (FE-AC)	5,656	3.3%
7	日本信号株式会社	3,853	2.3%
8	GOVERNMENT OF NORWAY	3,666	2.1%
9	BANK PICTET AND CIE(EUROPE)AG,SUCCURSALE DE LUXEMBOURG REF UCITS	3,323	1.9%
10	西川 恭子	3,200	1.9%
合計		84,216	49.2%

`24/10月期 上期

■所有者

	株式数(千株)	構成比	人数(人)	構成比
合計	171,048	100.0%	45,962	100.0%
政府・地方公共団体	-	-	-	-
金融機関	35,365	20.7%	36	0.1%
証券会社	3,987	2.3%	38	0.1%
その他の法人	27,456	16.1%	301	0.7%
うち、証券保管振替機構	12	0.0%	1	0.0%
外国法人等	64,148	37.5%	427	0.9%
うち、個人	28	0.0%	95	0.2%
個人・その他	39,635	23.2%	45,159	98.3%
自己株式	455	0.3%	1	0.0%

■株式数構成比



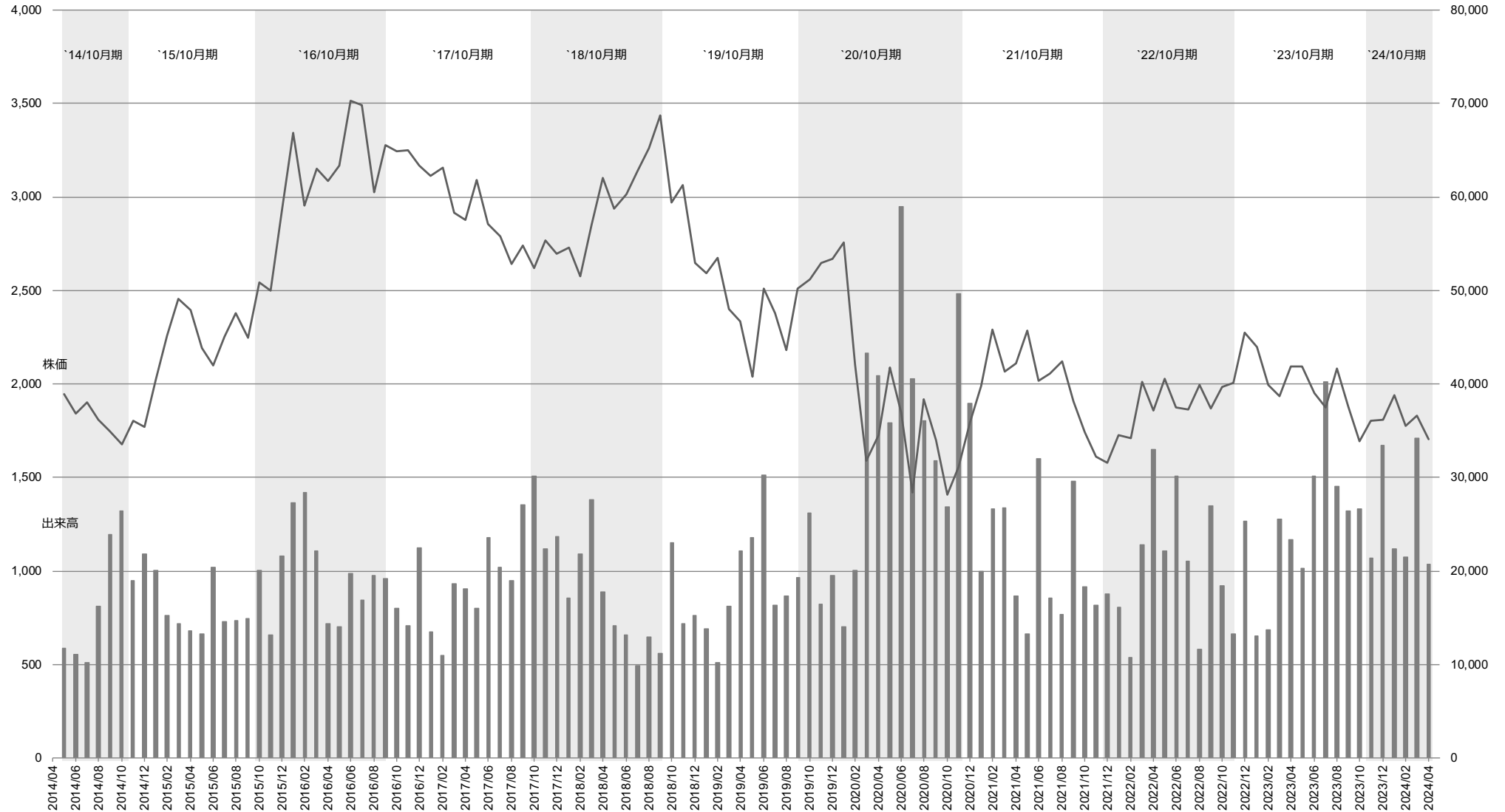
■大株主の状況

順位	株主氏名	株式数(千株)	持株比率
1	有限会社千寿	21,746	12.7%
2	日本マスタートラスト信託銀行株式会社(信託口)	19,437	11.4%
3	西川 光一	8,110	4.7%
4	株式会社日本カストディ銀行(信託口)	7,115	4.2%
5	西川 功	6,194	3.6%
6	BANK PICTET AND CIE(EUROPE)AG,SUCCURSALE DE LUXEMBOURG REF UCITS	4,081	2.4%
7	日本信号株式会社	3,853	2.3%
8	GOVERNMENT OF NORWAY	3,747	2.2%
9	JP JPMSE LUX RE UBS AG LONDON BRANCH EQ CO	3,224	1.9%
10	西川 恭子	3,200	1.9%
合計		80,710	47.2%

15. 株価データ

[株価：円]

[出来高：千株]



[参考] 新株予約権等の状況

	ストックオプション2018	有償ストックオプション2019	2025年満期ユーロ円建CB	2028年満期ユーロ円建CB
決議	2018/11/30 取締役会	2019/2/28 取締役会	2018/10/11 取締役会	2023/2/8 取締役会
行使期間	2021/1/1-2026/12/31	2021/4/1-2027/3/31	2018/11/12-2025/10/15	2023/3/10-2028/2/10
種類	普通株式	普通株式	普通株式	普通株式
残数(株)	249,000	294,000	1,911,714	14,124,294
発行額	-	-	35,000百万円(残存価格7,310百万円)	35,000百万円
備考	-	株価コミットメント型有償新株予約権2019	転換価格3,823.8円 2023/2/8買入消却を決定(買入額27,413百万円)	転換価格2,478円