

Data Book 2025 目次

連結業績

P.1~2	業績ハイライト
P.3	損益計算書(PL)
P.4	貸借対照表(BS)
P.5	キャッシュフロー計算書／業績指標／従業員数
P.6	設備投資／減価償却
P.7~8	セグメント別 損益計算書(PL)
P.9	[参考] 決算短信ベースのセグメント別PL／組替詳細

駐車場事業

P.10~11	駐車場件台数
P.12~13	タイムズパーキング - 件台数／解約理由／占有率
P.14	タイムズパーキング - 非連結業績／KPI

モビリティ事業

P.15	タイムズカー - サービス規模／KPI
------	---------------------

会員サービス

P.16	会員サービス - サービス規模
------	-----------------

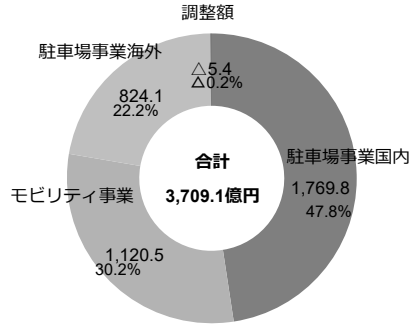
株式情報

P.17	株主構成／大株主の状況
P.18	株価推移／新株予約権等の状況

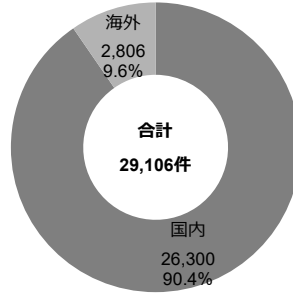
00.ハイライト

00-1.通期ハイライト

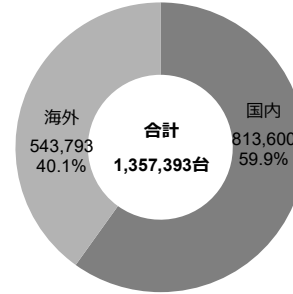
‘24/10月期 売上高 (億円)



‘24/10月期末 駐車場 件数



‘24/10月期末 駐車場 台数



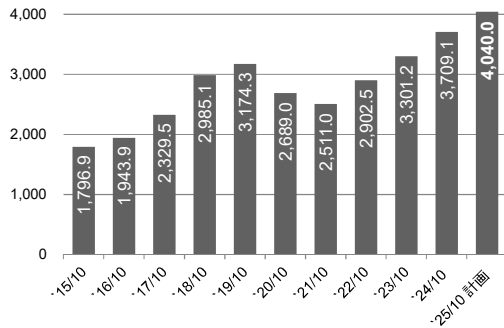
‘24/10月期末 タイムスカー関連数値

貸出拠点数	19,961 箇所
車両合計	69,170 台
うち、タイムスカー専用	51,051 台
会員数	3,032.6 千人

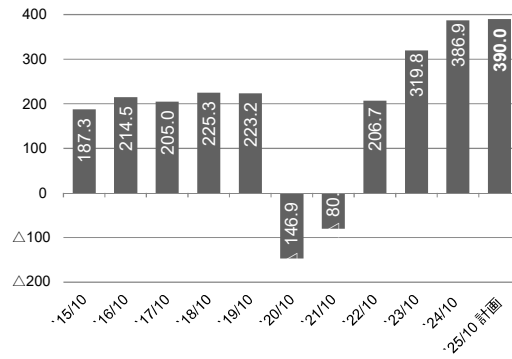
‘24/10月期末 会員関連数値

タイムスクラブ 会員	11,927.4 千人
タイムズビジネスサービス 発行カード	1,596.2 千枚
タイムズペイ加盟店数	32,457 店

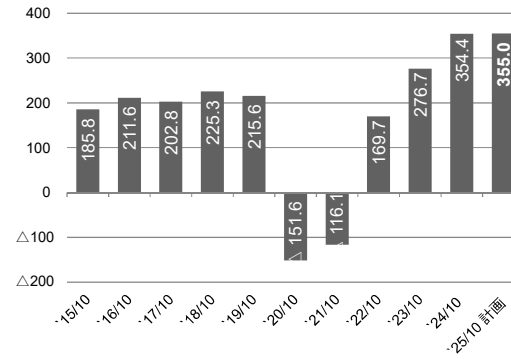
売上高 (億円)



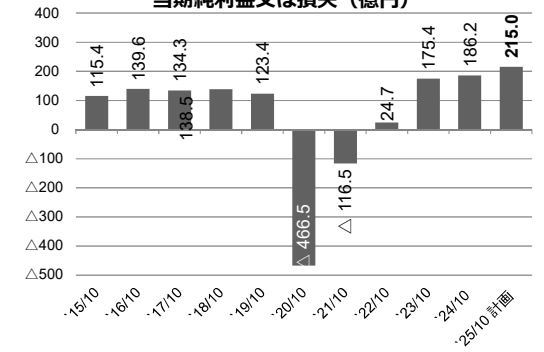
営業利益又は損失 (億円)



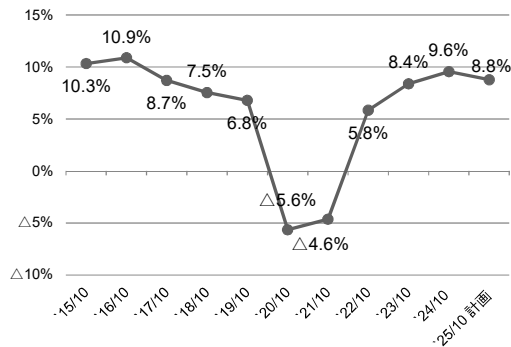
経常利益又は損失 (億円)



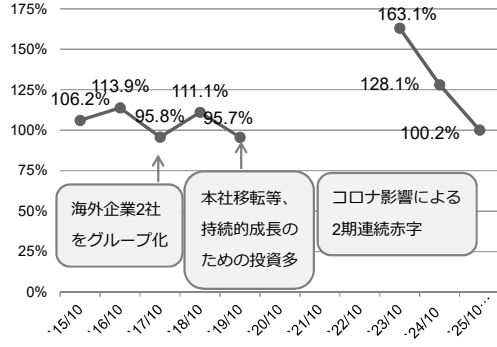
親会社株主に帰属する
当期純利益又は損失 (億円)



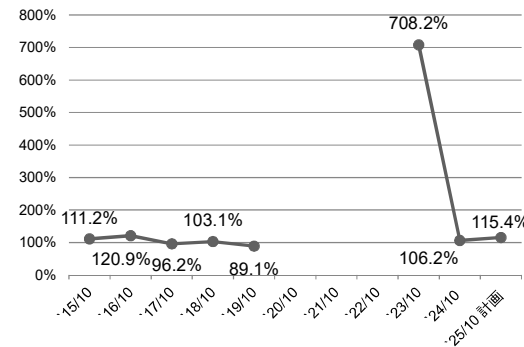
経常利益率



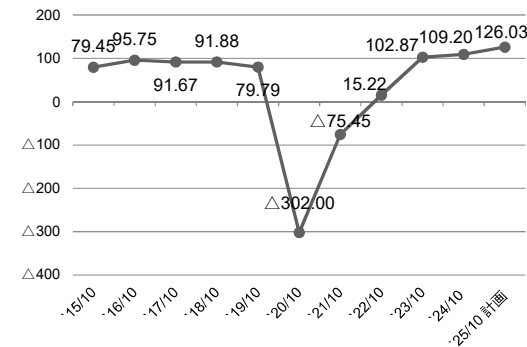
経常利益前期比



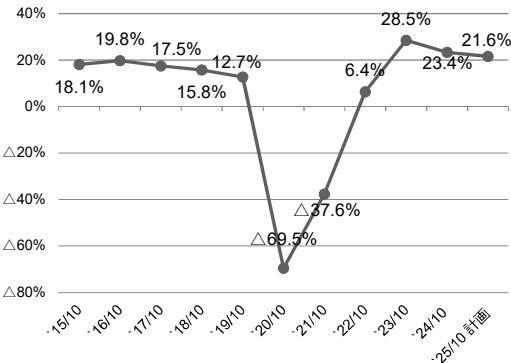
親会社株主に帰属する当期純利益前期比



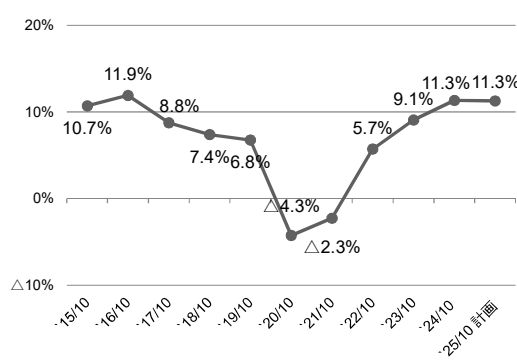
一株当たり当期純利益(EPS)



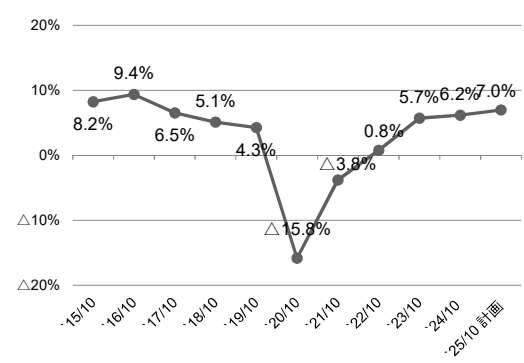
株主資本当期純利益率(ROE)



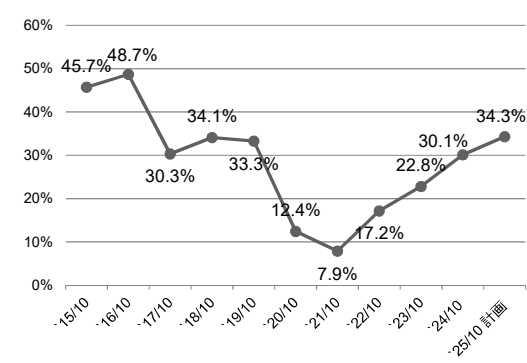
投下資本利益率(ROIC*)



総資産当期純利益率(ROA)

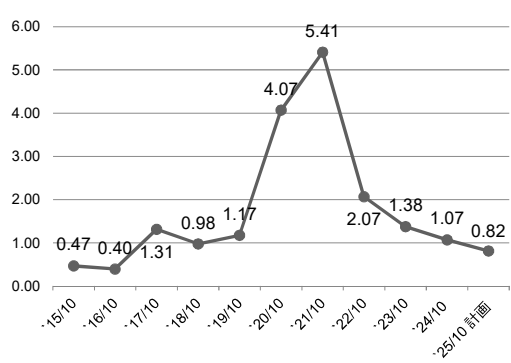


株主資本比率

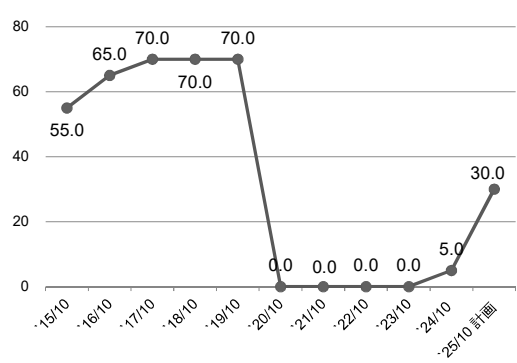


*ROIC：(税引き後営業利益：営業利益×(1-法定実効税率)／(期中平均有利子負債+期中平均株主資本)

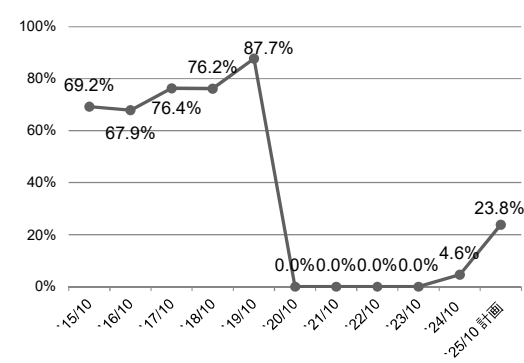
ネットD/Eレシオ*



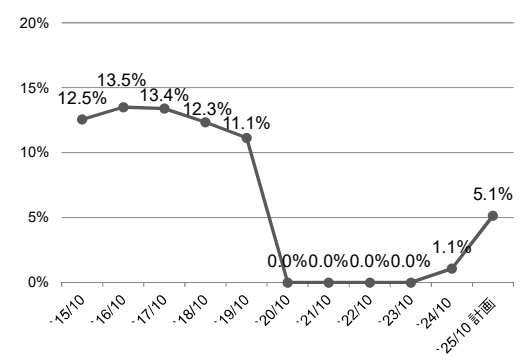
一株当たり配当金



配当性向



株主資本配当率(DOE*)



*ネットD/Eレシオ：(有利子負債-現金及び預金)／株主資本

*DOE：配当総額／株主資本

01.連結業績

		'11/10	'12/10	'13/10	'14/10	'15/10	'16/10	'17/10	'18/10	'19/10	'20/10	'21/10	'22/10	'23/10	'24/10	'25/10 計画
売上高	(百万円)	124,079	139,546	155,621	167,022	179,698	194,398	232,956	298,517	317,438	268,904	251,102	290,253	330,123	370,913	404,000
		109.6%	112.5%	111.5%	107.3%	107.6%	108.2%	119.8%	128.1%	106.3%	84.7%	93.4%	115.6%	113.7%	112.4%	108.9%
売上原価		90,825	100,124	111,978	122,930	132,992	141,349	172,767	226,234	239,346	232,556	210,408	219,659	240,496	268,843	296,700
		111.0%	110.2%	111.8%	109.8%	108.2%	106.3%	122.2%	130.9%	105.8%	97.2%	90.5%	104.4%	109.5%	111.8%	110.4%
売上総利益		33,254	39,422	43,643	44,091	46,706	53,048	60,188	72,283	78,092	36,347	40,693	70,593	89,626	102,069	107,300
		105.9%	118.5%	110.7%	101.0%	105.9%	113.6%	113.5%	120.1%	108.0%	46.5%	112.0%	173.5%	127.0%	113.9%	105.1%
販売費及び一般管理費		19,962	21,613	24,135	26,537	27,975	31,595	39,683	49,743	55,770	51,045	48,732	49,921	57,639	63,371	68,300
		107.5%	108.3%	111.7%	110.0%	105.4%	112.9%	125.6%	125.4%	112.1%	91.5%	95.5%	102.4%	115.5%	109.9%	107.8%
営業利益 又は損失(△)		13,292	17,809	19,508	17,554	18,730	21,453	20,505	22,539	22,322	△14,698	△8,039	20,672	31,986	38,697	39,000
		103.5%	134.0%	109.5%	90.0%	106.7%	114.5%	95.6%	109.9%	99.0%	-	-	-	154.7%	121.0%	100.8%
経常利益 又は損失(△)		12,711	17,317	19,507	17,509	18,589	21,164	20,281	22,532	21,566	△15,168	△11,619	16,970	27,673	35,445	35,500
		107.0%	136.2%	112.6%	89.8%	106.2%	113.9%	95.8%	111.1%	95.7%	-	-	-	163.1%	128.1%	100.2%
親会社株主に帰属する当期純利益 又は損失(△)		6,546	9,670	11,260	10,388	11,549	13,963	13,439	13,851	12,348	△46,652	△11,658	2,476	17,542	18,625	21,500
		100.9%	147.7%	116.4%	92.3%	111.2%	120.9%	96.2%	103.1%	89.1%	-	-	-	708.2%	106.2%	115.4%
EBITDA*		25,916	32,316	36,393	36,381	39,267	43,386	45,728	53,176	55,767	24,678	26,735	52,160	63,502	73,922	77,300
		109.5%	124.7%	112.6%	100.0%	107.9%	110.5%	105.4%	116.3%	104.9%	44.3%	108.3%	195.1%	121.7%	116.4%	104.6%

*EBITDA：営業利益＋減価償却費＋のれん等償却額

02.収益性

		'11/10	'12/10	'13/10	'14/10	'15/10	'16/10	'17/10	'18/10	'19/10	'20/10	'21/10	'22/10	'23/10	'24/10	'25/10 計画
売上総利益率	(%)	26.8%	28.3%	28.0%	26.4%	26.0%	27.3%	25.8%	24.2%	24.6%	13.5%	16.2%	24.3%	27.1%	27.5%	26.6%
		△0.9pt	+1.4pt	△0.2pt	△1.6pt	△0.4pt	+1.3pt	△1.5pt	△1.6pt	+0.4pt	△11.1pt	+2.7pt	+8.1pt	+2.8pt	+0.4pt	△1.0pt
営業利益率		10.7%	12.8%	12.5%	10.5%	10.4%	11.0%	8.8%	7.6%	7.0%	△5.5%	△3.2%	7.1%	9.7%	10.4%	9.7%
		△0.6pt	+2.0pt	△0.2pt	△2.0pt	△0.1pt	+0.6pt	△2.2pt	△1.3pt	△0.5pt	△12.5pt	+2.3pt	+10.3pt	+2.6pt	+0.7pt	△0.8pt
経常利益率		10.2%	12.4%	12.5%	10.5%	10.3%	10.9%	8.7%	7.5%	6.8%	△5.6%	△4.6%	5.8%	8.4%	9.6%	8.8%
		△0.2pt	+2.2pt	+0.1pt	△2.1pt	△0.1pt	+0.5pt	△2.2pt	△1.2pt	△0.8pt	△12.4pt	+1.0pt	+10.5pt	+2.5pt	+1.2pt	△0.8pt
当期純利益率		5.3%	6.9%	7.2%	6.2%	6.4%	7.2%	5.8%	4.6%	3.9%	△17.3%	△4.6%	0.9%	5.3%	5.0%	5.3%
		△0.5pt	+1.7pt	+0.3pt	△1.0pt	+0.2pt	+0.8pt	△1.4pt	△1.1pt	△0.8pt	△21.2pt	+12.7pt	+5.5pt	+4.5pt	△0.3pt	+0.3pt
EBITDA比率		20.9%	23.2%	23.4%	21.8%	21.9%	22.3%	19.6%	17.8%	17.6%	9.2%	10.6%	18.0%	19.2%	19.9%	19.1%
		△0.0pt	+2.3pt	+0.2pt	△1.6pt	+0.1pt	+0.5pt	△2.7pt	△1.8pt	△0.2pt	△8.4pt	+1.5pt	+7.3pt	+1.3pt	+0.7pt	△0.8pt

03.販売費及び一般管理費

		'11/10	'12/10	'13/10	'14/10	'15/10	'16/10	'17/10	'18/10	'19/10	'20/10	'21/10	'22/10	'23/10	'24/10	'25/10 計画
合計	(百万円)	19,962	21,613	24,135	26,537	27,975	31,595	39,683	49,743	55,770	51,045	48,732	49,921	57,639	63,371	68,300
		107.5%	108.3%	111.7%	110.0%	105.4%	112.9%	125.6%	125.4%	112.1%	91.5%	95.5%	102.4%	115.5%	109.9%	107.8%
役員報酬		365	400	453	357	345	432	589	589	709	460	444	423	643	909	1,000
		134.9%	109.6%	113.2%	78.9%	96.5%	125.4%	136.2%	100.0%	120.3%	64.9%	96.6%	95.2%	152.0%	141.2%	110.0%
人件費		10,347	11,162	12,117	13,578	14,638	15,966	19,030	24,415	28,016	24,528	24,901	26,230	30,438	33,048	35,500
		107.1%	107.9%	108.6%	112.1%	107.8%	109.1%	119.2%	114.8%	114.8%	87.5%	101.5%	105.3%	116.0%	108.6%	107.4%
広告宣伝費		897	1,273	1,750	1,730	1,744	1,838	2,068	2,341	2,978	1,600	1,292	1,201	1,706	2,451	3,000
		123.9%	141.9%	137.4%	98.9%	100.8%	105.4%	112.5%	113.2%	127.2%	53.7%	80.8%	92.9%	142.0%	143.6%	122.4%
旅費交通費		491	545	635	663	711	800	939	1,207	1,214	931	878	935	1,147	1,281	1,300
		101.7%	111.0%	116.5%	104.4%	107.3%	112.4%	117.4%	128.6%	100.6%	76.7%	94.4%	106.5%	122.6%	111.6%	101.5%
支払手数料		1,826	1,877	2,169	2,410	2,477	3,630	5,587	4,950	5,532	6,113	7,609	7,060	8,968	9,412	11,000
		115.2%	102.8%	115.6%	111.1%	102.8%	146.5%	153.9%	88.6%	111.8%	110.5%	124.5%	92.8%	127.0%	104.9%	116.9%
地代家賃		1,922	1,969	1,998	1,968	2,089	2,152	2,465	2,973	3,148	2,652	2,679	2,538	2,574	3,117	3,200
		83.4%	102.5%	101.5%	98.5%	106.2%	103.0%	114.6%	120.6%	105.9%	84.2%	101.0%	94.7%	101.4%	121.1%	102.6%
減価償却費(契約関連無形資産 除く)		723	637	722	792	879	935	1,168	1,301	1,771	2,442	2,812	2,610	2,805	3,277	3,600
		86.9%	88.1%	113.3%	109.7%	111.0%	106.4%	124.9%	111.4%	136.1%	137.9%	115.1%	92.8%	107.5%	116.8%	109.8%
租税公課		628	591	646	700	781	1,078	1,650	1,901	1,987	1,838	455	582	648	611	600
		127.7%	94.1%	109.2%	108.4%	111.6%	138.0%	152.9%	115.3%	104.5%	92.5%	24.8%	127.9%	111.3%	94.3%	98.1%
のれん等償却額(契約関連無形資産 含む)		331	356	356	356	153	153	805	3,314	3,038	2,797	1,506	1,636	1,887	1,848	1,700
		211.9%	107.7%	100.0%	100.0%	43.1%	100.0%	524.0%	411.7%	91.7%	92.1%	53.8%	108.6%	115.3%	97.9%	92.0%
その他		2,429	2,798	3,283	3,978	4,154	4,606	5,377	6,747	7,372	7,681	6,152	6,700	6,819	7,413	7,400
		118.2%	115.2%	117.4%	121.1%	104.4%	110.9%	116.7%	125.5%	109.3%	104.2%	80.1%	108.9%	101.8%	108.7%	99.8%

04.連結貸借対照表

		'11/10	'12/10	'13/10	'14/10	'15/10	'16/10	'17/10	'18/10	'19/10	'20/10	'21/10	'22/10	'23/10	'24/10	'25/10 計画
資産合計	(百万円)	108,935	117,808	126,574	135,293	145,462	152,939	259,852	283,171	293,097	295,775	319,628	307,626	308,157	295,701	320,000
		114.7%	108.1%	107.4%	106.9%	107.5%	105.1%	169.9%	109.0%	103.5%	100.9%	108.1%	96.2%	100.2%	96.0%	108.2%
流動資産		25,608	27,891	32,722	35,148	40,928	42,022	59,097	72,311	74,611	101,260	139,183	137,814	133,335	111,840	113,000
		104.5%	108.9%	117.3%	107.4%	116.4%	102.7%	140.6%	122.4%	103.2%	135.7%	137.5%	99.0%	96.7%	83.9%	101.0%
うち、現金及び預金		11,997	12,044	15,326	15,709	20,079	19,477	18,152	30,081	24,881	55,536	92,044	85,781	73,957	48,733	48,000
		96.0%	100.4%	127.2%	102.5%	127.8%	97.0%	93.2%	165.7%	82.7%	223.2%	165.7%	93.2%	86.2%	65.9%	98.5%
固定資産		83,327	89,917	93,852	100,145	104,533	110,916	200,755	210,859	218,485	194,514	180,445	169,513	174,647	183,810	207,000
		118.2%	107.9%	104.4%	106.7%	104.4%	106.1%	181.0%	105.0%	103.6%	89.0%	92.8%	93.9%	103.0%	105.2%	112.6%
うち、モビリティ車両		19,465	21,972	24,765	27,557	31,301	35,613	42,066	50,193	53,728	36,317	31,031	27,009	30,632	35,762	43,400
		135.5%	112.9%	112.7%	111.3%	113.6%	113.8%	118.1%	119.3%	107.0%	67.6%	85.4%	87.0%	113.4%	116.7%	121.4%
うち、のれん(契約関連無形資産 含む)		2,068	1,711	1,355	693	540	386	64,452	60,480	51,117	25,469	26,202	27,601	24,662	21,837	20,200
		158.1%	82.8%	79.2%	51.2%	77.9%	71.6%	16671.2%	93.8%	84.5%	49.8%	102.9%	105.3%	89.4%	88.5%	92.5%
繰延資産		-	-	-	-	-	-	-	-	-	-	-	297	174	51	-
		-	-	-	-	-	-	-	-	-	-	-	-	58.6%	29.4%	-
負債合計		67,249	69,915	71,606	75,103	79,580	79,668	181,047	188,324	202,305	264,629	303,195	267,584	249,741	217,557	221,000
		120.6%	104.0%	102.4%	104.9%	106.0%	100.1%	227.3%	104.0%	107.4%	130.8%	114.6%	88.3%	93.3%	87.1%	101.6%
流動負債		41,218	44,555	31,885	32,274	33,219	33,357	114,043	63,907	71,222	90,428	117,910	100,687	103,922	79,026	80,000
		131.7%	108.1%	71.6%	101.2%	102.9%	100.4%	341.9%	56.0%	111.4%	127.0%	130.4%	85.4%	103.2%	76.0%	101.2%
固定負債		26,031	25,360	39,721	42,828	46,360	46,310	67,004	124,416	131,082	174,201	185,285	166,897	145,818	138,531	141,000
		106.4%	97.4%	156.6%	107.8%	108.2%	99.9%	144.7%	185.7%	105.4%	132.9%	106.4%	90.1%	87.4%	95.0%	101.8%
純資産合計		41,685	47,893	54,968	60,190	65,882	73,270	78,804	94,847	90,791	31,146	16,432	40,042	58,416	78,144	99,000
		106.3%	114.9%	114.8%	109.5%	109.5%	111.2%	107.6%	120.4%	95.7%	34.3%	52.8%	243.7%	145.9%	133.8%	126.7%
うち、株主資本		42,399	48,934	55,639	61,032	66,520	74,461	78,748	96,573	97,511	36,761	25,175	52,758	70,301	89,063	109,800
		105.8%	115.4%	113.7%	109.7%	109.0%	111.9%	105.8%	122.6%	101.0%	37.7%	68.5%	209.6%	133.2%	126.7%	123.3%
有利子負債	(百万円)	45,597	42,886	46,092	46,460	51,208	48,939	121,637	124,284	139,380	205,219	228,294	194,915	170,724	143,983	137,500
		115.3%	94.1%	107.5%	100.8%	110.2%	95.6%	248.5%	102.2%	112.1%	147.2%	111.2%	85.4%	87.6%	84.3%	95.5%
新株予約権付転換社債		1,000	1,000	21,000	21,000	21,000	19,970	19,970	35,000	35,000	35,000	35,000	35,000	42,310	42,310	35,000
		100.0%	100.0%	2100.0%	100.0%	100.0%	95.1%	100.0%	175.3%	100.0%	100.0%	100.0%	100.0%	120.9%	100.0%	82.7%
銀行借入		35,452	31,391	14,038	13,522	18,593	17,081	84,466	73,404	88,777	126,513	158,557	129,709	99,616	69,689	69,200
		112.9%	88.5%	44.7%	96.3%	137.5%	91.9%	494.5%	86.9%	120.9%	142.5%	125.3%	81.8%	76.8%	70.0%	99.3%
うち、劣後特約付シンジケートローン		-	-	-	-	-	-	-	-	-	-	50,000	50,000	50,000	50,000	50,000
		-	-	-	-	-	-	-	-	-	-	-	100.0%	100.0%	100.0%	100.0%
リース債務		9,144	10,494	11,054	11,938	11,614	11,887	17,200	15,880	15,603	43,706	34,737	30,205	28,797	31,984	33,300
		128.2%	114.8%	105.3%	108.0%	97.3%	102.4%	144.7%	92.3%	98.3%	280.1%	79.5%	87.0%	95.3%	111.1%	104.1%
株主資本比率	(%)	38.9%	41.5%	44.0%	45.1%	45.7%	48.7%	30.3%	34.1%	33.3%	12.4%	7.9%	17.2%	22.8%	30.1%	34.3%
		△3.3pt	+2.6pt	+2.4pt	+1.2pt	+0.6pt	+3.0pt	△18.4pt	+3.8pt	△0.8pt	△20.8pt	△4.6pt	+9.3pt	+5.7pt	+7.3pt	+4.2pt
ネットD/Eレシオ*	(倍)	0.79	0.63	0.55	0.50	0.47	0.40	1.31	0.98	1.17	4.07	5.41	2.07	1.38	1.07	0.82
		+0.12	△0.16	△0.08	△0.05	△0.04	△0.07	+0.92	△0.34	+0.20	+2.90	+1.34	△3.34	△0.69	△0.31	△0.25

* ネットD/Eレシオ：(有利子負債-現金及び預金)／株主資本

05. キャッシュ・フロー計算書

		'11/10	'12/10	'13/10	'14/10	'15/10	'16/10	'17/10	'18/10	'19/10	'20/10	'21/10	'22/10	'23/10	'24/10	'25/10 計画
営業活動によるキャッシュ・フロー	(百万円)	20,999	28,794	26,123	33,101	35,155	39,627	38,290	53,476	45,695	39,400	34,818	29,369	48,188	54,176	69,000
		103.5%	137.1%	90.7%	126.7%	106.2%	112.7%	96.6%	139.7%	85.4%	86.2%	88.4%	84.4%	164.1%	112.4%	127.4%
投資活動によるキャッシュ・フロー		△18,738	△18,743	△17,477	△22,930	△24,627	△27,148	△72,769	△43,095	△49,454	△21,819	△12,349	△17,357	△25,661	△37,563	△46,700
財務活動によるキャッシュ・フロー		△2,755	△10,009	△5,416	△9,799	△6,162	△13,036	32,570	1,754	△782	12,886	13,167	△20,116	△35,633	△42,508	△23,000
現金及び現金同等物期末残高		11,981	12,028	15,310	15,693	20,063	19,461	17,775	29,785	24,664	55,269	91,795	85,065	73,299	48,041	47,300
		96.0%	100.4%	127.3%	102.5%	127.9%	97.0%	91.3%	167.6%	82.8%	224.1%	166.1%	92.7%	86.2%	65.5%	98.5%
フリー・キャッシュ・フロー		2,261	10,051	8,645	10,170	10,527	12,479	△34,478	10,380	△3,758	17,580	22,468	12,012	22,527	16,612	22,300
		22.6%	444.5%	86.0%	117.6%	103.5%	118.5%	-	-	-	-	127.8%	53.5%	187.5%	73.7%	134.2%

06. 指標

		'11/10	'12/10	'13/10	'14/10	'15/10	'16/10	'17/10	'18/10	'19/10	'20/10	'21/10	'22/10	'23/10	'24/10	'25/10 計画
株主資本当期純利益率(ROE)	(%)	15.9%	21.2%	21.5%	17.8%	18.1%	19.8%	17.5%	15.8%	12.7%	△69.5%	△37.6%	6.4%	28.5%	23.4%	21.6%
		△0.9pt	+5.3pt	+0.4pt	△3.7pt	+0.3pt	+1.7pt	△2.3pt	△1.7pt	△3.1pt	△82.2pt	+31.8pt	+44.0pt	+22.2pt	△5.1pt	△1.8pt
投下資本利益率(ROIC*)	(%)	9.4%	11.7%	12.5%	10.4%	10.7%	11.9%	8.8%	7.4%	6.8%	△4.3%	△2.3%	5.7%	9.1%	11.3%	11.3%
		△0.4pt	+2.3pt	+0.8pt	△2.1pt	+0.3pt	+1.2pt	△3.2pt	△1.4pt	△0.6pt	△11.0pt	+2.0pt	+8.0pt	+3.4pt	+2.2pt	△0.1pt
総資産当期純利益率(ROA)	(%)	6.4%	8.5%	9.2%	7.9%	8.2%	9.4%	6.5%	5.1%	4.3%	△15.8%	△3.8%	0.8%	5.7%	6.2%	7.0%
		△0.6pt	+2.1pt	+0.7pt	△1.3pt	+0.3pt	+1.1pt	△2.8pt	△1.4pt	△0.8pt	△20.1pt	+12.1pt	+4.6pt	+4.9pt	+0.5pt	+0.8pt
一株当たり当期純利益(EPS)	(円)	45.94	67.37	78.10	71.66	79.45	95.75	91.67	91.88	79.79	△302.00	△75.45	15.22	102.87	109.20	126.03
		100.8%	146.6%	115.9%	91.8%	110.9%	120.5%	95.7%	100.2%	86.8%	-	-	-	675.8%	106.1%	115.4%
一株当たり純資産(BPS)	(円)	290.70	330.44	377.91	411.86	449.33	497.87	532.39	610.01	585.37	200.55	105.93	234.46	342.28	457.79	578.90
		105.9%	113.7%	114.4%	109.0%	109.1%	110.8%	106.9%	114.6%	96.0%	34.3%	52.8%	221.3%	146.0%	133.7%	126.5%
株価収益率(PER)	(倍)	19.89	20.37	24.53	23.37	32.02	33.89	28.57	32.34	32.07	△4.66	△23.07	130.40	16.44	17.50	-
		116.6%	102.4%	120.5%	95.3%	137.0%	105.8%	84.3%	113.2%	99.2%	-	-	-	12.6%	106.5%	-
株価純資産倍率(PBR)	(倍)	3.14	4.15	5.07	4.07	5.66	6.52	4.92	4.87	4.37	7.02	16.43	8.47	4.94	4.17	-
		110.9%	132.1%	122.1%	80.2%	139.2%	115.1%	75.5%	99.0%	89.8%	160.6%	234.1%	51.5%	58.4%	84.5%	-
配当金	(円)	30.0	35.0	40.0	50.0	55.0	65.0	70.0	70.0	70.0	0.0	0.0	0.0	0.0	5.0	30.0
		100.0%	116.7%	114.3%	125.0%	110.0%	118.2%	107.7%	100.0%	100.0%	0.0%	-	-	-	-	600.0%
配当性向	(%)	65.3%	52.0%	51.2%	69.8%	69.2%	67.9%	76.4%	76.2%	87.7%	0.0%	0.0%	0.0%	0.0%	4.6%	23.8%
		△0.5pt	△13.3pt	△0.7pt	+18.6pt	△0.5pt	△1.3pt	+8.5pt	△0.2pt	+11.5pt	△87.7pt	-	-	-	+4.6pt	+19.2pt
株主資本配当率(DOE*)	(%)	10.4%	11.0%	11.0%	12.4%	12.5%	13.5%	13.4%	12.3%	11.1%	0.0%	0.0%	0.0%	0.0%	1.1%	5.1%
		△0.7pt	+0.7pt	+0.0pt	+1.4pt	+0.1pt	+1.0pt	△0.1pt	△1.1pt	△1.2pt	△11.1pt	-	-	-	+1.1pt	+4.1pt

*ROIC：(税引き後営業利益：営業利益×(1-法定実効税率)／(期中平均有利子負債+期中平均株主資本)

*DOE：配当総額／株主資本

07. 従業員数

		'11/10	'12/10	'13/10	'14/10	'15/10	'16/10	'17/10	'18/10	'19/10	'20/10	'21/10	'22/10	'23/10	'24/10
合計	(人)	1,523	1,617	1,784	2,010	2,248	2,448	4,577	4,899	5,490	5,565	5,029	4,970	5,234	5,502
		112.8%	106.2%	110.3%	112.7%	111.8%	108.9%	187.0%	107.0%	112.1%	101.4%	90.4%	98.8%	105.3%	105.1%
国内従業員数		1,523	1,617	1,784	2,010	2,248	2,448	2,716	3,084	3,476	3,802	3,573	3,492	3,623	3,858
		112.8%	106.2%	110.3%	112.7%	111.8%	108.9%	110.9%	113.5%	112.7%	109.4%	94.0%	97.7%	103.8%	106.5%
駐車場営業人員数		314	327	378	404	445	440	478	501	569	598	529	451	467	491
		111.7%	104.1%	115.6%	106.9%	110.1%	98.9%	108.6%	104.8%	113.6%	105.1%	88.5%	85.3%	103.5%	105.1%
その他		1,209	1,290	1,406	1,606	1,803	2,008	2,238	2,583	2,907	3,204	3,044	3,041	3,156	3,367
		113.1%	106.7%	109.0%	114.2%	112.3%	111.4%	111.5%	115.4%	112.5%	110.2%	95.0%	99.9%	103.8%	106.7%
海外従業員数		-	-	-	-	-	-	1,861	1,815	2,014	1,763	1,456	1,478	1,611	1,644
		-	-	-	-	-	-	-	97.5%	111.0%	87.5%	82.6%	101.5%	109.0%	102.0%

08.設備投資

		'11/10	'12/10	'13/10	'14/10	'15/10	'16/10	'17/10	'18/10	'19/10	'20/10	'21/10	'22/10	'23/10	'24/10	'25/10 計画
合計	(百万円)	22,909	22,574	21,595	26,008	27,932	30,266	38,470	46,564	54,270	31,845	20,344	21,772	36,607	50,566	58,800
		140.8%	98.5%	95.7%	120.4%	107.4%	108.4%	127.1%	121.0%	116.5%	58.7%	63.9%	107.0%	168.1%	138.1%	116.3%
駐車場事業国内		8,437	9,504	7,891	9,502	8,388	9,698	11,107	10,333	11,042	6,521	2,458	3,072	9,233	17,280	19,000
		129.6%	112.6%	83.0%	120.4%	88.3%	115.6%	114.5%	93.0%	106.9%	59.1%	37.7%	124.9%	300.5%	187.1%	109.9%
モビリティ事業		12,783	11,855	12,704	15,650	18,214	19,401	22,984	27,332	30,779	11,988	9,388	10,430	16,523	15,531	21,700
		141.3%	92.7%	107.2%	123.2%	116.4%	106.5%	118.5%	118.9%	112.6%	39.0%	78.3%	111.1%	158.4%	94.0%	139.7%
駐車場事業海外		-	-	-	-	-	-	1,477	4,333	3,500	10,936	6,922	7,060	8,346	14,331	14,100
		-	-	-	-	-	-	-	293.2%	80.8%	312.5%	63.3%	102.0%	118.2%	171.7%	98.4%
その他		1,687	1,213	999	856	1,328	1,165	2,899	4,565	8,948	2,398	1,575	1,209	2,504	3,423	4,000
		235.5%	71.9%	82.4%	85.6%	155.2%	87.7%	248.8%	157.4%	196.0%	26.8%	65.7%	76.8%	207.1%	136.7%	116.9%

[再掲] 設備投資-項目別・事業別

(下段：前年同期比)

		'11/10	'12/10	'13/10	'14/10	'15/10	'16/10	'17/10	'18/10	'19/10	'20/10	'21/10	'22/10	'23/10	'24/10	'25/10 計画
合計	(百万円)	22,909	22,574	21,595	26,008	27,932	30,266	38,470	46,564	54,270	31,845	20,344	21,772	36,607	50,566	58,800
		140.8%	98.5%	95.7%	120.4%	107.4%	108.4%	127.1%	121.0%	116.5%	58.7%	63.9%	107.0%	168.1%	138.1%	116.3%
キャッシュベース		18,683	18,385	17,677	21,349	24,290	26,041	33,598	42,328	48,920	21,880	15,516	17,084	29,141	36,061	43,600
		152.2%	98.4%	96.1%	120.8%	113.8%	107.2%	129.0%	126.0%	115.6%	44.7%	70.9%	110.1%	170.6%	123.7%	120.9%
駐車場事業国内		4,414	5,875	4,068	5,095	4,746	5,476	6,542	6,565	5,962	3,736	1,691	2,528	6,259	13,129	14,200
		132.3%	133.1%	69.2%	125.3%	93.2%	115.4%	119.5%	100.4%	90.8%	62.7%	45.3%	149.5%	247.5%	209.8%	108.2%
モビリティ事業		12,581	11,296	12,609	15,398	18,214	19,399	22,984	27,332	30,779	11,988	9,388	10,430	16,523	15,531	21,700
		153.0%	89.8%	111.6%	122.1%	118.3%	106.5%	118.5%	118.9%	112.6%	39.0%	78.3%	111.1%	158.4%	94.0%	139.7%
駐車場事業海外		-	-	-	-	-	-	1,171	3,865	3,230	3,756	2,861	2,915	3,854	3,977	3,700
		-	-	-	-	-	-	-	330.1%	83.6%	116.3%	76.2%	101.9%	132.2%	103.2%	93.0%
その他		1,687	1,213	999	856	1,328	1,165	2,899	4,565	8,948	2,398	1,575	1,209	2,504	3,423	4,000
		235.5%	71.9%	82.4%	85.6%	155.2%	87.7%	248.8%	157.4%	196.0%	26.8%	65.7%	76.8%	207.1%	136.7%	116.9%
ファイナンスリース		4,225	4,188	3,918	4,659	3,641	4,225	4,871	4,235	5,349	9,965	4,827	4,688	7,466	14,505	15,200
		105.8%	99.1%	93.5%	118.9%	78.2%	116.0%	115.3%	86.9%	126.3%	186.3%	48.4%	97.1%	159.3%	194.3%	104.8%
駐車場事業国内		4,022	3,629	3,822	4,407	3,641	4,222	4,565	3,767	5,079	2,785	767	543	2,974	4,151	4,800
		126.8%	90.2%	105.3%	115.3%	82.6%	116.0%	108.1%	82.5%	134.8%	54.8%	27.5%	70.9%	547.3%	139.6%	115.6%
モビリティ事業		202	559	95	252	-	2	-	-	-	-	-	-	-	-	-
		24.6%	275.5%	17.0%	265.1%	-	-	-	-	-	-	-	-	-	-	-
駐車場事業海外		-	-	-	-	-	-	306	467	270	7,180	4,060	4,144	4,492	10,354	10,400
		-	-	-	-	-	-	-	152.5%	57.7%	2658.1%	56.6%	102.1%	108.4%	230.5%	100.4%
その他		-	-	-	-	-	-	-	-	-	-	-	-	-	-	-
		-	-	-	-	-	-	-	-	-	-	-	-	-	-	-

09.減価償却費 (契約関連無形資産除く)

(下段：前年同期比)

		'11/10	'12/10	'13/10	'14/10	'15/10	'16/10	'17/10	'18/10	'19/10	'20/10	'21/10	'22/10	'23/10	'24/10	'25/10 計画
合計	(百万円)	12,292	14,150	16,528	18,470	20,383	21,779	24,418	27,322	30,407	37,129	33,286	29,851	29,629	33,376	36,600
		115.2%	115.1%	116.8%	111.7%	110.4%	106.9%	112.1%	111.9%	111.3%	122.1%	89.7%	89.7%	99.3%	112.6%	109.7%
駐車場事業国内		5,709	6,748	7,940	8,790	9,647	9,879	9,669	9,732	10,491	9,549	8,423	7,212	6,623	7,352	9,000
		135.6%	118.2%	117.7%	110.7%	109.7%	102.4%	97.9%	100.7%	107.8%	91.0%	88.2%	85.6%	91.8%	111.0%	122.4%
モビリティ事業		6,052	6,996	8,083	9,141	10,117	11,259	12,800	14,148	15,662	14,306	11,205	9,779	8,846	9,328	10,900
		100.0%	115.6%	115.5%	113.1%	110.7%	111.3%	113.7%	110.5%	110.7%	91.3%	78.3%	87.3%	90.5%	105.4%	116.8%
駐車場事業海外		-	-	-	-	-	-	1,246	2,673	3,123	11,234	11,277	10,904	12,160	14,349	14,100
		-	-	-	-	-	-	-	214.5%	116.8%	359.7%	100.4%	111.5%	118.0%	98.3%	
その他		530	405	503	538	618	640	701	767	1,130	2,037	2,381	1,954	1,997	2,346	2,600
		130.5%	76.3%	124.4%	106.9%	114.8%	103.6%	109.6%	109.4%	147.3%	180.2%	116.8%	82.1%	102.2%	117.4%	110.8%

10.セグメントデータ

10-1.セグメント別業績

(下段：前年同期比)

		'13/10	'14/10	'15/10	'16/10	'17/10	'18/10	'19/10	'20/10	'21/10	'22/10	'23/10	'24/10	'25/10 計画	'24/10 (新)*	'25/10 計画(新)
売上高	(百万円)	155,621	167,022	179,698	194,398	232,956	298,517	317,438	268,904	251,102	290,253	330,123	370,913	404,000	370,913	404,000
		111.5%	107.3%	107.6%	108.2%	119.8%	128.1%	106.3%	84.7%	93.4%	115.6%	113.7%	112.4%	108.9%	-	108.9%
駐車場事業国内		122,033	127,516	134,266	142,142	148,399	157,006	165,997	150,757	146,744	154,292	163,056	176,984	189,700	182,302	196,000
		109.5%	104.5%	105.3%	105.9%	104.4%	105.8%	105.7%	90.8%	97.3%	105.1%	105.7%	108.5%	107.2%	-	107.5%
モビリティ事業		33,588	39,505	45,431	52,255	61,060	73,747	86,174	73,819	67,142	78,711	98,816	112,058	132,700	112,058	132,700
		119.6%	117.6%	115.0%	115.0%	116.8%	120.8%	116.9%	85.7%	91.0%	117.2%	125.5%	113.4%	118.4%	-	118.4%
駐車場事業海外		-	-	-	-	23,671	68,290	65,976	45,169	38,498	57,983	69,478	82,411	82,000	82,411	82,000
		-	-	-	-	-	288.5%	96.6%	68.5%	85.2%	150.6%	119.8%	118.6%	99.5%	-	99.5%
UK		-	-	-	-	-	36,119	35,915	21,340	15,976	29,966	37,568	46,334	46,400	46,334	46,400
		-	-	-	-	-	-	99.4%	59.4%	74.9%	187.6%	125.4%	123.3%	100.1%	-	100.1%
AU		-	-	-	-	18,076	24,139	22,003	15,894	14,475	17,380	19,562	21,982	21,000	21,982	21,000
		-	-	-	-	-	133.5%	91.1%	72.2%	91.1%	120.1%	112.6%	112.4%	95.5%	-	95.5%
TW		-	-	-	-	2,524	3,046	3,359	3,872	4,229	5,798	7,223	8,791	9,700	8,791	9,700
		-	-	-	-	-	120.7%	110.3%	115.3%	109.2%	137.1%	124.6%	121.7%	110.3%	-	110.3%
その他		-	-	-	-	3,070	4,983	4,698	4,061	3,817	4,839	5,124	5,303	4,900	5,303	4,900
		-	-	-	-	-	162.3%	94.3%	86.4%	94.0%	126.8%	105.9%	103.5%	92.4%	-	92.4%
調整額		-	-	-	-	△174	△526	△709	△842	△1,283	△734	△1,228	△541	△400	△5,860	△6,700
		-	-	-	-	-	-	-	-	-	-	-	-	-	-	-
営業費用		136,113	149,468	160,968	172,945	212,451	275,978	295,116	283,602	259,141	269,581	298,137	332,216	365,000	332,216	365,000
		111.8%	109.8%	107.7%	107.4%	122.8%	129.9%	106.9%	96.1%	91.4%	104.0%	110.6%	111.4%	109.9%	-	109.9%
駐車場事業国内		96,599	103,902	111,221	117,162	123,040	130,100	138,697	139,940	129,082	124,635	131,006	142,346	155,400	145,935	159,700
		109.7%	107.6%	107.0%	105.3%	105.0%	105.7%	106.6%	100.9%	92.2%	96.6%	105.1%	108.7%	109.2%	-	109.4%
モビリティ事業		32,921	38,452	42,589	47,798	55,948	66,889	77,062	71,955	63,481	69,374	81,303	89,252	107,700	96,121	116,100
		117.2%	116.8%	110.8%	112.2%	117.1%	119.6%	115.2%	93.4%	88.2%	109.3%	117.3%	109.8%	120.7%	-	120.8%
駐車場事業海外		-	-	-	-	22,904	66,142	64,009	56,778	53,591	61,395	69,201	81,531	81,600	81,531	81,600
		-	-	-	-	-	288.8%	96.8%	88.7%	94.4%	114.6%	112.7%	117.8%	100.1%	-	100.1%
UK		-	-	-	-	6	34,948	34,627	31,552	30,812	34,417	38,777	46,498	48,150	46,498	48,150
		-	-	-	-	-	582466.7%	99.1%	91.1%	97.7%	111.7%	112.7%	119.9%	103.6%	-	103.6%
AU		-	-	-	-	17,755	23,663	21,732	17,692	14,954	17,161	19,350	22,663	20,400	22,663	20,400
		-	-	-	-	-	133.3%	91.8%	81.4%	84.5%	114.8%	112.8%	117.1%	90.0%	-	90.0%
TW		-	-	-	-	2,372	2,860	3,121	3,608	4,207	5,351	6,197	7,521	8,300	7,521	8,300
		-	-	-	-	-	120.6%	109.1%	115.6%	116.6%	127.2%	115.8%	121.4%	110.4%	-	110.4%
その他		-	-	-	-	2,771	4,670	4,530	3,925	3,617	4,468	4,876	4,847	4,750	4,847	4,750
		-	-	-	-	-	168.5%	97.0%	86.6%	92.2%	123.5%	109.1%	99.4%	98.0%	-	98.0%
調整額(本社コスト等)		6,593	7,114	7,156	7,985	10,559	12,848	15,349	14,927	12,986	14,175	16,627	19,086	20,300	8,627	7,600
		117.1%	107.9%	100.6%	111.6%	132.2%	121.7%	119.5%	97.3%	87.0%	109.2%	117.3%	114.8%	106.4%	-	88.1%
営業利益 又は損失(△)	(百万円)	19,508	17,554	18,730	21,453	20,505	22,539	22,322	△14,698	△8,039	20,672	31,986	38,697	39,000	38,697	39,000
		109.5%	90.0%	106.7%	114.5%	95.6%	109.9%	99.0%	-	-	-	154.7%	121.0%	100.8%	-	100.8%
駐車場事業国内		25,434	23,614	23,045	24,980	25,359	26,906	27,300	10,817	17,662	29,657	32,050	34,638	34,300	36,367	36,300
		108.5%	92.8%	97.6%	108.4%	101.5%	106.1%	101.5%	39.6%	163.3%	167.9%	108.1%	108.1%	99.0%	-	99.8%
モビリティ事業		667	1,053	2,842	4,457	5,112	6,858	9,112	1,864	3,661	9,337	17,513	22,806	25,000	15,937	16,600
		9528.6%	158.0%	269.7%	156.8%	114.7%	134.1%	132.9%	20.5%	196.4%	255.0%	187.6%	130.2%	109.6%	-	104.2%
駐車場事業海外 (のれん等償却前)		-	-	-	-	767	2,148	1,967	△11,609	△15,093	△3,412	277	880	400	880	400
		-	-	-	-	-	280.2%	91.6%	-	-	-	-	317.0%	45.4%	-	45.4%
UK		-	-	-	-	△6	1,171	1,288	△10,212	△14,836	△4,451	△1,209	△164	△1,750	△164	△1,750
		-	-	-	-	-	-	57.1%	-	-	-	-	-	-	-	-
AU		-	-	-	-	321	476	271	△1,798	△479	219	212	△681	600	△681	600
		-	-	-	-	-	104.8%	53.8%	-	-	-	96.9%	-	-	-	-
TW		-	-	-	-	152	186	238	264	22	447	1,026	1,270	1,400	1,270	1,400
		-	-	-	-	-	122.2%	127.7%	110.9%	8.5%	1997.8%	229.4%	123.8%	110.2%	-	110.2%
その他		-	-	-	-	299	313	168	136	200	371	248	456	150	456	150
		-	-	-	-	-	104.8%	53.8%	81.2%	146.2%	185.8%	66.8%	183.8%	32.9%	-	32.9%
調整額(本社コスト等)		△6,593	△7,114	△7,156	△7,985	△10,733	△13,374	△16,058	△15,769	△14,269	△14,909	△17,855	△19,627	△20,700	△14,487	△14,300
		-	-	-	-	-	-	-	-	-	-	-	-	-	-	-

* `25/10月期より各セグメントの収益をより正確に測定するためにセグメント間の組み替えを実施しております。

[参考] 駐車場事業海外 営業損益(のれん等償却後)

(下段：前年同期比)

	`13/10	`14/10	`15/10	`16/10	`17/10	`18/10	`19/10	`20/10	`21/10	`22/10	`23/10	`24/10	`25/10 計画
合計	-	-	-	-	115	△879	△992	△14,406	△16,595	△5,049	△1,609	△967	△1,300
(百万円)	-	-	-	-	-	-	-	-	-	-	-	-	-
UK	-	-	-	-	△6	△987	△847	△12,229	△15,680	△5,359	△2,313	△1,169	△2,650
AU	-	-	-	-	△110	△87	△248	△2,288	△840	△175	△199	△1,123	170
TW	-	-	-	-	152	186	238	264	22	447	1,026	1,270	1,400
その他	-	-	-	-	79	8	△135	△152	△96	38	△122	55	△220
	-	-	-	-	-	10.4%	-	-	-	-	-	-	-

[参考] 旧セグメント情報と新たなセグメント情報の組替詳細

(百万円)

	`24/10				`25/10(計画)			
	①	②	③	①+②+③	①	②	③	①+②+③
	これまでのセグメント情報	タイムズカー 駐車場費用 (グループ内取引)	ICT部門 コスト配賦	新たなセグメント情報	これまでのセグメント情報	タイムズカー 駐車場費用 (グループ内取引)	ICT部門 コスト配賦	新たなセグメント情報
営業利益	38,697	-	-	38,697	39,000	-	-	39,000
駐車場事業国内	34,638	+5,318	△3,588	36,367	34,300	+6,300	△4,300	36,300
モビリティ事業	22,806	△5,318	△1,551	15,937	25,000	△6,300	△2,100	16,600
駐車場事業海外	880	-	-	880	400	-	-	400
調整額(本社コスト・のれん等償却額等)	△19,627	-	+5,139	△14,487	△20,700	-	+6,400	△14,300
営業外損益	△3,252	-	-	△3,252	△3,500	-	-	△3,500
経常利益	35,445	-	-	35,445	35,500	-	-	35,500

10-2. セグメント別収益性

(下段：前年同期差)

	`13/10	`14/10	`15/10	`16/10	`17/10	`18/10	`19/10	`20/10	`21/10	`22/10	`23/10	`24/10	`25/10 計画	`24/10(新)	`25/10 計画(新)
営業利益率	12.5%	10.5%	10.4%	11.0%	8.8%	7.6%	7.0%	△5.5%	△3.2%	7.1%	9.7%	10.4%	9.7%	10.4%	9.7%
駐車場事業国内	△0.2pt	△2.0pt	△0.1pt	+0.6pt	△2.2pt	△1.3pt	△0.5pt	△12.5pt	+2.3pt	+10.3pt	+2.6pt	+0.7pt	△0.8pt	-	△0.8pt
モビリティ事業	△0.2pt	△2.3pt	△1.4pt	+0.4pt	△0.5pt	+0.0pt	△0.7pt	△9.3pt	+4.9pt	+7.2pt	+0.4pt	△0.1pt	△1.5pt	-	△1.4pt
駐車場事業海外(のれん等償却前)	+2.0pt	+0.7pt	+3.6pt	+2.3pt	△0.2pt	+0.9pt	+1.3pt	△8.0pt	+2.9pt	+6.4pt	+5.9pt	+2.6pt	△1.5pt	-	△1.7pt
UK	-	-	-	-	-	△0.1pt	△0.2pt	△28.7pt	△13.5pt	+33.3pt	+6.3pt	+0.7pt	△0.6pt	-	△0.6pt
AU	-	-	-	-	-	-	+0.3pt	△51.4pt	△45.0pt	+78.0pt	+11.6pt	+2.9pt	△3.4pt	-	△3.4pt
TW	-	-	-	-	1.8%	2.0%	1.2%	△11.3%	△3.3%	1.3%	1.1%	△3.1%	2.9%	△3.1%	2.9%
その他	-	-	-	-	6.0%	6.1%	7.1%	6.8%	0.5%	7.7%	14.2%	14.4%	14.4%	14.4%	14.4%
	-	-	-	-	-	+0.1pt	+1.0pt	△0.3pt	△6.3pt	+7.2pt	+6.5pt	+0.2pt	△0.0pt	-	△0.0pt
	-	-	-	-	9.8%	6.3%	3.6%	3.4%	5.2%	7.7%	4.8%	8.6%	3.1%	8.6%	3.1%
	-	-	-	-	-	△3.5pt	△2.7pt	△0.2pt	+1.9pt	+2.4pt	△2.8pt	+3.8pt	△5.5pt	-	△5.5pt

[参考] 決算短信ベースのセグメント情報

		'11/10	'12/10	'13/10	'14/10	'15/10	'16/10	'17/10	'18/10	'19/10	'20/10	'21/10	'22/10	'23/10	'24/10	'25/10 計画
売上高	(百万円)	124,080	139,547	155,428	167,022	179,698	194,398	232,956	298,517	317,438	268,904	251,102	290,253	330,123	370,913	404,000
		109.6%	112.5%	111.4%	107.5%	107.6%	108.2%	119.8%	128.1%	106.3%	84.7%	93.4%	115.6%	113.7%	112.4%	108.9%
駐車場事業国内		102,561	111,596	122,142	127,619	134,348	140,304	148,399	157,006	165,997	155,216	150,446	158,857	167,915	182,302	196,000
		107.9%	108.8%	109.4%	104.5%	105.3%	104.4%	105.8%	105.8%	105.7%	93.5%	96.9%	105.6%	105.7%	108.6%	107.5%
モビリティ事業		22,097	28,120	33,431	39,537	45,506	52,300	61,060	73,505	85,847	73,484	66,807	78,288	98,287	112,058	132,700
		118.2%	127.3%	118.9%	118.3%	115.1%	114.9%	116.7%	120.4%	116.8%	85.6%	90.9%	117.2%	125.5%	114.0%	118.4%
駐車場事業海外		-	-	-	-	-	1,937	23,671	68,290	65,976	45,169	38,498	57,983	69,478	82,411	82,000
		-	-	-	-	-	-	1221.7%	288.5%	96.6%	68.5%	85.2%	150.6%	119.8%	68.5%	99.5%
調整額		△578	△169	△145	△134	△156	△144	△174	△285	△382	△4,966	△4,650	△4,877	△5,558	△5,860	△6,700
		128.5%	29.4%	-	-	-	-	-	-	-	-	-	-	-	-	-
営業利益 又は損失(△)	(百万円)	13,292	17,809	19,509	17,554	18,730	21,453	20,505	22,539	22,322	△14,698	△8,039	20,672	31,986	38,697	39,000
		103.5%	134.0%	109.5%	90.0%	106.7%	114.5%	95.6%	109.9%	99.0%	-	54.7%	-	154.7%	121.0%	100.8%
駐車場事業国内		19,303	23,434	25,434	23,614	23,044	24,899	25,359	26,906	27,300	15,276	21,364	34,222	36,909	39,956	40,600
		101.6%	121.4%	108.5%	92.8%	97.6%	108.0%	101.8%	106.1%	101.5%	56.0%	139.9%	160.2%	107.9%	108.3%	101.6%
モビリティ事業		△109	7	668	1,053	2,843	4,457	5,112	6,858	9,112	△2,595	△41	4,772	12,655	17,488	18,700
		-	-	9144.0%	157.6%	269.8%	156.8%	114.7%	134.1%	132.9%	-	-	-	265.2%	138.2%	106.9%
駐車場事業海外		-	-	-	-	-	81	115	△879	△992	△14,406	△16,595	△5,049	△1,609	△967	△1,300
		-	-	-	-	-	-	141.8%	-	-	-	-	-	-	-	-
調整額		△5,901	△5,631	△6,593	△7,114	△7,156	△7,985	△10,082	△10,345	△13,098	△12,973	△12,767	△13,272	△15,968	△17,778	△19,000
		95.2%	95.4%	-	-	-	-	-	-	-	-	-	-	-	-	-
営業利益率	(%)	10.7%	12.8%	12.6%	10.5%	10.4%	11.0%	8.8%	7.6%	7.0%	△5.5%	△3.2%	7.1%	9.7%	10.4%	9.7%
		△0.6pt	+2.0pt	△0.2pt	△2.0pt	△0.1pt	+0.6pt	△2.2pt	△1.3pt	△0.5pt	△12.5pt	+2.3pt	+10.3pt	+2.6pt	+0.7pt	△0.8pt
駐車場事業国内		18.8%	21.0%	20.8%	18.5%	17.2%	17.7%	17.1%	17.1%	16.4%	9.8%	14.2%	21.5%	22.0%	21.9%	20.7%
		△1.2pt	+2.2pt	△0.2pt	△2.3pt	△1.4pt	+0.6pt	△0.7pt	+0.0pt	△0.7pt	△6.6pt	+4.4pt	+7.3pt	+0.4pt	△0.1pt	△1.2pt
モビリティ事業		△0.5%	0.0%	2.0%	2.7%	6.2%	8.5%	8.4%	9.3%	10.6%	△3.5%	△0.1%	6.1%	12.9%	15.6%	14.1%
		△0.7pt	+0.5pt	+2.0pt	+0.7pt	+3.6pt	+2.3pt	△0.2pt	+1.0pt	+1.3pt	△14.1pt	+3.5pt	+6.2pt	+6.8pt	+2.7pt	△1.5pt
駐車場事業海外		-	-	-	-	-	4.2%	0.5%	△1.3%	△1.5%	△31.9%	△43.1%	△8.7%	△2.3%	△1.2%	△1.6%
		-	-	-	-	-	-	△3.7pt	△1.8pt	△0.2pt	△30.4pt	△11.2pt	+34.4pt	+6.4pt	+1.1pt	△0.4pt

* '20/10月期より、駐車場事業国内とモビリティ事業において、新たにセグメント間の内部取引(タイムスカーの駐車場費用)が発生しております。

(下段：前年同期比)

駐車場費用	(百万円)	-	-	-	-	-	-	-	-	-	4,459	3,702	4,565	4,858	5,318	6,300
		-	-	-	-	-	-	-	-	-	-	83.0%	123.3%	106.4%	109.5%	118.5%

[参考] 決算短信セグメント情報とIR事業損益の組替詳細

(百万円)

	'24/10				'25/10			
	① 決算短信 セグメント情報	② タイムスカー 駐車場費用 (グループ内取引)	③ のれん等 償却額	④ IR 事業利益	① 決算短信 セグメント情報	② タイムスカー 駐車場費用 (グループ内取引)	③ のれん等 償却額	④ IR 事業利益
営業利益	31,986	-	-	31,986	38,697	-	-	38,697
駐車場事業国内	36,909	△4,858	-	32,050	39,956	△5,318	-	34,638
モビリティ事業	12,655	+4,858	-	17,513	17,488	+5,318	-	22,806
駐車場事業海外	△1,609	-	+1,887	277	△967	-	+1,848	880
小計	47,955	-	+1,887	49,842	56,476	-	+1,848	58,325
調整額(本社コスト・のれん等償却額等)	△15,968	-	△1,887	△17,855	△17,778	-	△1,848	△19,627
営業外損益	△4,313	-	-	△4,313	△3,252	-	-	△3,252
経常利益	27,673	-	-	27,673	35,445	-	-	35,445

11. 駐車場事業データ

11-1. 駐車場件数

(下段：前期末比)

		'11/10	'12/10	'13/10	'14/10	'15/10	'16/10	'17/10	'18/10	'19/10	'20/10	'21/10	'22/10	'23/10	'24/10	'25/10 計画
件数合計	(件)	10,697	13,476	14,561	15,803	16,859	17,675	20,582	23,972	28,134	28,578	27,771	27,609	27,965	29,106	30,900
		110.9%	126.0%	108.1%	108.5%	106.7%	104.8%	116.4%	116.5%	117.4%	101.6%	97.2%	99.4%	101.3%	104.1%	106.2%
国内駐車場		10,697	13,166	14,203	15,426	16,414	17,171	18,376	21,515	25,503	25,744	25,558	25,246	25,379	26,300	27,400
		110.9%	123.1%	107.9%	108.6%	106.4%	104.6%	107.0%	117.1%	118.5%	100.9%	99.3%	98.8%	100.5%	103.6%	104.2%
直営駐車場		10,697	11,824	12,843	14,057	15,060	15,877	17,089	20,245	24,185	24,437	24,242	23,899	24,063	25,035	26,100
		110.9%	110.5%	108.6%	109.5%	107.1%	105.4%	107.6%	118.5%	119.5%	101.0%	99.2%	98.6%	100.7%	104.0%	104.3%
タイムズパーキング		10,697	11,764	12,769	13,994	14,987	15,792	16,845	17,597	18,908	18,914	17,879	17,399	17,639	18,571	19,400
		110.9%	110.0%	108.5%	109.6%	107.1%	105.4%	106.7%	104.5%	107.5%	100.0%	94.5%	97.3%	101.4%	105.3%	104.5%
タイムズのB		-	-	-	-	-	-	121	2,534	5,166	5,391	6,207	6,315	6,198	6,215	6,400
		-	-	-	-	-	-	-	2094.2%	203.9%	104.4%	115.1%	101.7%	98.1%	100.3%	103.0%
月極駐車場		-	1,038	1,124	1,236	1,355	1,533	1,737	1,837	2,052	2,167	2,179	2,504	2,596	2,742	2,900
		-	-	108.3%	110.0%	109.6%	113.1%	113.3%	105.8%	111.7%	105.6%	100.6%	114.9%	103.7%	105.6%	105.8%
タイムズパーキング併設		-	978	1,050	1,173	1,282	1,448	1,614	1,723	1,941	2,035	2,023	2,319	2,370	2,493	2,600
		-	-	107.4%	111.7%	109.3%	112.9%	111.5%	106.8%	112.7%	104.8%	99.4%	114.6%	102.2%	105.2%	104.3%
管理受託駐車場		-	1,342	1,360	1,369	1,354	1,294	1,287	1,270	1,318	1,307	1,316	1,347	1,316	1,265	1,300
		-	-	101.3%	100.7%	98.9%	95.6%	99.5%	98.7%	103.8%	99.2%	100.7%	102.4%	97.7%	96.1%	102.8%
時間貸駐車場		-	1,040	1,047	1,061	1,046	991	962	921	907	843	825	814	786	732	720
		-	-	100.7%	101.3%	98.6%	94.7%	97.1%	95.7%	98.5%	92.9%	97.9%	98.7%	96.6%	93.1%	98.4%
月極駐車場		-	333	346	345	345	335	367	394	458	510	539	581	581	583	580
		-	-	103.9%	99.7%	100.0%	97.1%	109.6%	107.4%	116.2%	111.4%	105.7%	107.8%	100.0%	100.3%	99.5%
時間貸駐車場併設		-	31	33	37	37	32	42	45	47	46	48	48	51	50	50
		-	-	106.5%	112.1%	100.0%	86.5%	131.3%	107.1%	104.4%	97.9%	104.3%	100.0%	106.3%	98.0%	100.0%
海外駐車場		310	358	377	445	504	2,206	2,457	2,631	2,834	2,213	2,363	2,586	2,806	3,500	
		-	-	115.5%	105.3%	118.0%	113.3%	437.7%	111.4%	107.1%	107.7%	78.1%	106.8%	109.4%	108.5%	124.7%
UK		-	-	-	-	-	527	579	579	579	581	588	699	809	898	1,210
		-	-	-	-	-	-	109.9%	100.0%	100.3%	101.2%	118.9%	115.7%	111.0%	134.7%	
AU		-	-	-	-	-	587	658	676	660	535	480	451	466	600	
		-	-	-	-	-	-	112.1%	102.7%	97.6%	81.1%	89.7%	94.0%	103.3%	128.8%	
TW		-	189	204	215	261	293	364	433	494	579	628	703	808	901	1,040
		-	-	107.9%	105.4%	121.4%	112.3%	124.2%	119.0%	114.1%	117.2%	108.5%	111.9%	114.9%	111.5%	115.4%
SG		-	-	-	-	-	346	316	296	303	352	360	372	373	400	
		-	-	-	-	-	-	91.3%	93.7%	102.4%	116.2%	102.3%	103.3%	100.3%	107.2%	
MY		-	-	-	-	-	110	112	108	109	110	121	146	168	250	
		-	-	-	-	-	-	101.8%	96.4%	100.9%	100.9%	110.0%	120.7%	115.1%	148.8%	
KR*		-	121	154	162	184	211	272	359	478	602	-	-	-	-	
		-	-	127.3%	105.2%	113.6%	114.7%	128.9%	132.0%	133.1%	125.9%	-	-	-	-	

*2021年9月15日に当社の持分法適用関連会社であるGS PARK24 CO.,LTDの全株式を譲渡

11-2. 駐車場台数

		'11/10	'12/10	'13/10	'14/10	'15/10	'16/10	'17/10	'18/10	'19/10	'20/10	'21/10	'22/10	'23/10	'24/10	'25/10 計画
台数合計	(台)	357,129	515,831	561,669	606,565	642,943	682,207	1,231,615	1,385,694	1,441,853	1,463,673	1,337,079	1,292,759	1,299,815	1,357,393	1,443,800
		113.7%	144.4%	108.9%	108.0%	106.0%	106.1%	180.5%	112.5%	104.1%	101.5%	91.4%	96.7%	100.5%	104.4%	106.4%
国内駐車場		357,129	494,672	534,742	575,976	609,479	645,849	684,352	738,283	776,079	767,178	745,660	732,868	761,654	813,600	862,800
		113.7%	138.5%	108.1%	107.7%	105.8%	106.0%	106.0%	107.9%	105.1%	98.9%	97.2%	98.3%	103.9%	106.8%	106.0%
直営駐車場		357,129	412,980	450,669	491,214	521,836	556,844	581,897	626,245	659,772	649,163	623,607	614,217	640,806	702,626	748,800
		113.7%	115.6%	109.1%	109.0%	106.2%	106.7%	104.5%	107.6%	105.4%	98.4%	96.1%	98.5%	104.3%	109.6%	106.6%
タイムズパーキング		357,129	395,784	431,039	470,675	499,473	531,135	551,422	580,751	604,413	592,225	562,077	552,042	576,262	633,208	677,000
		113.7%	110.8%	108.9%	109.2%	106.1%	106.3%	103.8%	105.3%	104.1%	98.0%	94.9%	98.2%	104.4%	109.9%	106.9%
タイムズのB		-	-	-	-	-	-	645	13,835	20,270	21,145	24,426	24,050	24,314	25,812	26,500
		-	-	-	-	-	-	-	2145.0%	146.5%	104.3%	115.5%	98.5%	101.1%	106.2%	102.7%
月極駐車場		-	17,196	19,630	20,539	22,363	25,709	29,830	31,659	35,089	35,793	37,104	38,125	40,230	43,606	45,300
		-	-	114.2%	104.6%	108.9%	115.0%	116.0%	106.1%	110.8%	102.0%	103.7%	102.8%	105.5%	108.4%	103.9%
管理受託駐車場		-	81,692	84,073	84,762	87,643	89,005	102,455	112,038	116,307	118,015	122,053	118,651	120,848	110,974	114,000
		-	-	102.9%	100.8%	103.4%	101.6%	115.1%	109.4%	103.8%	101.5%	103.4%	97.2%	101.9%	91.8%	102.7%
時間貸駐車場		-	61,183	63,195	63,714	66,611	69,435	80,879	89,191	92,367	93,568	97,058	96,315	99,285	90,148	93,000
		-	-	103.3%	100.8%	104.5%	104.2%	116.5%	110.3%	103.6%	101.3%	103.7%	99.2%	103.1%	90.8%	103.2%
月極駐車場		-	20,509	20,878	21,048	21,032	19,570	21,576	22,847	23,940	24,447	24,995	22,336	21,563	20,826	21,000
		-	-	101.8%	100.8%	99.9%	93.0%	110.3%	105.9%	104.8%	102.1%	102.2%	89.4%	96.5%	96.6%	100.8%
海外駐車場		-	21,159	26,927	30,589	33,464	36,358	547,263	647,411	665,774	696,495	591,419	559,891	538,161	543,793	581,000
		-	-	127.3%	113.6%	109.4%	108.6%	1505.2%	118.3%	102.8%	104.6%	84.9%	94.7%	96.1%	101.0%	106.8%
UK		-	-	-	-	-	-	165,901	222,367	223,050	222,359	215,173	204,575	188,706	187,500	201,000
		-	-	-	-	-	-	-	134.0%	100.3%	99.7%	96.8%	95.1%	92.2%	99.4%	107.2%
AU		-	-	-	-	-	-	176,111	220,317	220,775	222,113	190,487	164,232	147,177	148,801	153,500
		-	-	-	-	-	-	-	125.1%	100.2%	100.6%	85.8%	86.2%	89.6%	101.1%	103.2%
TW		-	8,168	8,617	9,532	10,628	12,511	15,591	17,854	20,605	23,559	24,786	26,503	28,863	31,890	34,000
		-	-	105.5%	110.6%	111.5%	117.7%	124.6%	114.5%	115.4%	114.3%	105.2%	106.9%	108.9%	110.5%	106.6%
SG		-	-	-	-	-	-	102,365	94,301	87,306	93,292	108,143	109,204	110,530	111,232	116,500
		-	-	-	-	-	-	-	92.1%	92.6%	106.9%	115.9%	101.0%	101.2%	100.6%	104.7%
MY		-	-	-	-	-	-	60,740	59,908	52,243	54,529	52,830	55,377	62,885	64,370	76,000
		-	-	-	-	-	-	-	98.6%	87.2%	104.4%	96.9%	104.8%	113.6%	102.4%	118.1%
KR		-	12,991	18,310	21,057	22,836	23,847	26,555	32,664	61,795	80,643	-	-	-	-	-
		-	-	140.9%	115.0%	108.4%	104.4%	111.4%	123.0%	189.2%	130.5%	-	-	-	-	-

11-3.タイムズパーキング件数・台数

(件台数 下段：前期末比／開発・解約・解約率 下段：前年同期比)

		'11/10	'12/10	'13/10	'14/10	'15/10	'16/10	'17/10	'18/10	'19/10	'20/10	'21/10	'22/10	'23/10	'24/10	'25/10 計画
件数	(件)	10,697	11,764	12,769	13,994	14,987	15,792	16,845	17,597	18,908	18,914	17,879	17,399	17,639	18,571	19,400
		110.9%	110.0%	108.5%	109.6%	107.1%	105.4%	106.7%	104.5%	107.5%	100.0%	94.5%	97.3%	101.4%	105.3%	104.5%
開発		1,570	1,638	1,673	1,977	1,697	1,709	1,632	1,636	2,078	1,212	443	558	974	1,565	1,800
		128.8%	104.3%	102.1%	118.2%	85.8%	100.7%	107.2%	89.3%	127.0%	58.3%	36.6%	126.0%	174.6%	160.7%	115.0%
解約		521	573	666	746	696	898	772	873	764	1,190	1,413	977	708	604	900
		109.0%	110.0%	116.2%	112.0%	93.3%	129.0%	86.0%	113.1%	87.5%	155.8%	118.7%	69.1%	72.5%	85.3%	149.0%
区分変更+区分移動		2	2	△2	△6	△8	△6	△7	△11	△3	△16	△65	△61	△26	△29	-
台数	(台)	357,129	395,784	431,039	470,675	499,473	531,135	551,422	580,751	604,413	592,225	562,077	552,042	576,262	633,208	677,000
		113.7%	110.8%	108.9%	109.2%	106.1%	106.3%	103.8%	105.3%	104.1%	98.0%	94.9%	98.2%	104.4%	109.9%	106.9%
開発		67,905	60,716	63,246	74,598	61,037	63,764	55,515	68,405	69,246	41,156	27,448	24,602	55,051	73,929	75,500
		98.3%	89.4%	104.2%	117.9%	81.8%	104.5%	87.1%	123.2%	101.2%	59.4%	66.7%	89.6%	223.8%	134.3%	102.1%
解約		22,448	19,387	24,887	31,397	28,949	28,811	31,445	34,630	42,226	51,550	50,002	30,723	27,937	17,615	32,500
		143.9%	86.4%	128.4%	126.2%	92.2%	99.5%	109.1%	110.1%	121.9%	122.1%	97.0%	61.4%	90.9%	63.1%	184.5%
区分変更+区分移動		△2,397	△2,674	△3,104	△3,565	△3,290	△3,291	△3,783	△4,446	△3,358	△1,794	△7,594	△3,914	△2,894	632	-
解約率	(%)	7.1%	5.4%	6.3%	7.3%	6.2%	5.8%	5.9%	6.3%	7.3%	8.5%	8.4%	5.5%	5.1%	3.1%	5.1%
		+1.2pt	△1.7pt	+0.9pt	+1.0pt	△1.1pt	△0.4pt	+0.2pt	+0.4pt	+1.0pt	+1.3pt	△0.1pt	△3.0pt	△0.4pt	△2.0pt	+2.1pt

11-4.タイムズパーキング - スタンダード件数・台数

(件台数 下段：前期末比／開発・解約・解約率 下段：前年同期比)

		'11/10	'12/10	'13/10	'14/10	'15/10	'16/10	'17/10	'18/10	'19/10	'20/10	'21/10	'22/10	'23/10	'24/10	'25/10 計画
件数	(件)	8,803	9,596	10,280	11,265	12,089	12,669	13,444	13,932	14,954	14,846	13,925	13,476	13,480	13,903	14,400
		110.2%	109.0%	107.1%	109.6%	107.3%	104.8%	106.1%	103.6%	107.3%	99.3%	93.8%	96.8%	100.0%	103.1%	103.6%
開発		1,265	1,303	1,270	1,605	1,382	1,349	1,442	1,219	1,623	901	279	383	609	948	1,250
		137.4%	103.0%	97.5%	126.4%	86.1%	97.6%	106.9%	84.5%	133.1%	55.5%	31.0%	137.3%	159.0%	155.7%	131.9%
解約		462	518	586	627	556	770	670	735	615	1,000	1,152	784	596	501	700
		108.2%	112.1%	113.1%	107.0%	88.7%	138.5%	87.0%	109.7%	83.7%	162.6%	115.2%	68.1%	76.0%	84.1%	139.7%
区分変更+区分移動		9	8	-	7	△2	1	3	4	14	△9	△48	△48	△9	△24	-
台数	(台)	130,168	139,616	144,613	157,019	164,935	170,479	175,940	176,804	184,524	177,712	160,768	153,523	152,289	155,880	159,500
		109.9%	107.3%	103.6%	108.6%	105.0%	103.4%	103.2%	100.5%	104.4%	96.3%	90.5%	95.5%	99.2%	102.4%	102.3%
開発		24,717	22,908	19,528	29,211	21,830	21,081	19,804	17,943	21,441	11,717	6,205	6,849	8,788	11,090	15,000
		130.5%	92.7%	85.2%	149.6%	74.7%	96.6%	93.9%	90.6%	119.5%	54.6%	53.0%	110.4%	128.3%	126.2%	135.3%
解約		11,782	11,685	12,339	14,529	11,363	12,879	11,836	14,591	12,181	14,994	17,759	11,286	8,212	6,693	11,000
		130.9%	99.2%	105.6%	117.7%	78.2%	113.3%	91.9%	123.3%	83.5%	123.1%	118.4%	63.6%	72.8%	81.5%	164.4%
区分変更+区分移動		△1,239	△1,775	△2,192	△2,276	△2,551	△2,658	△2,507	△2,488	△1,540	△3,535	△5,390	△2,808	△1,810	△806	-
解約率	(%)	9.9%	9.0%	8.8%	10.0%	7.2%	7.8%	6.9%	8.3%	6.9%	8.1%	10.0%	7.0%	5.3%	4.4%	7.1%
		+1.8pt	△1.0pt	△0.1pt	+1.2pt	△2.8pt	+0.6pt	△0.9pt	+1.4pt	△1.4pt	+1.2pt	+1.9pt	△3.0pt	△1.7pt	△1.0pt	+2.7pt

11-5.タイムズパーキング - パートナーサービス件数・台数

(件台数 下段：前期末比／開発・解約・解約率 下段：前年同期比)

		'11/10	'12/10	'13/10	'14/10	'15/10	'16/10	'17/10	'18/10	'19/10	'20/10	'21/10	'22/10	'23/10	'24/10	'25/10 計画
件数	(件)	1,894	2,168	2,489	2,729	2,898	3,123	3,401	3,665	3,954	4,068	3,954	3,923	4,159	4,668	5,000
		114.4%	114.5%	114.8%	109.6%	106.2%	107.8%	108.9%	107.8%	107.9%	102.9%	97.2%	99.2%	106.0%	112.2%	107.1%
開発		305	335	403	372	315	360	390	417	455	311	164	175	365	617	550
		102.3%	109.8%	120.3%	92.3%	84.7%	114.3%	108.3%	106.9%	109.1%	68.4%	52.7%	106.7%	208.6%	169.0%	89.1%
解約		59	55	80	119	140	128	102	138	149	190	261	193	112	103	200
		115.7%	93.2%	145.5%	148.8%	117.6%	91.4%	79.7%	135.3%	108.0%	127.5%	137.4%	73.9%	58.0%	92.0%	194.2%
区分変更+区分移動		△7	△6	△2	△13	△6	△7	△10	△15	△17	△7	△17	△13	△17	△5	-
台数	(台)	226,961	256,168	286,426	313,656	334,538	360,656	375,482	403,947	419,889	414,513	401,309	398,519	423,973	477,328	517,500
		116.0%	112.9%	111.8%	109.5%	106.7%	107.8%	104.1%	107.6%	103.9%	98.7%	96.8%	99.3%	106.4%	112.6%	108.4%
開発		43,188	37,808	43,718	45,387	39,207	42,683	35,711	50,462	47,805	29,439	21,243	17,753	46,263	62,839	60,500
		86.2%	87.5%	115.6%	103.8%	86.4%	108.9%	83.7%	141.3%	94.7%	61.6%	72.2%	83.6%	260.6%	135.8%	96.3%
解約		10,666	7,702	12,548	16,868	17,586	15,932	19,609	20,039	30,045	36,556	32,243	19,437	19,725	10,922	21,500
		161.5%	72.2%	162.9%	134.4%	104.3%	90.6%	123.1%	102.2%	149.9%	121.7%	88.2%	60.3%	101.5%	55.4%	196.9%
区分変更+区分移動		△1,158	△899	△912	△1,289	△739	△633	△1,276	△1,958	△1,818	1,741	△2,204	△1,106	△1,084	1,438	-
解約率	(%)	5.5%	3.4%	4.9%	5.9%	5.6%	4.8%	5.4%	5.3%	7.4%	8.7%	7.8%	4.8%	4.9%	2.6%	4.5%
		+1.1pt	△2.1pt	+1.5pt	+1.0pt	△0.3pt	△0.8pt	+0.7pt	△0.1pt	+2.1pt	+1.3pt	△0.9pt	△2.9pt	+0.1pt	△2.4pt	+1.9pt

11-6.タイムズパーキング - 解約理由内訳

(下段：構成比)

		'11/10	'12/10	'13/10	'14/10	'15/10	'16/10	'17/10	'18/10	'19/10	'20/10	'21/10	'22/10	'23/10	'24/10	'25/10 計画
合計	(件)	521	573	666	746	696	898	772	873	764	1,190	1,413	977	708	604	900
建築		289	299	366	351	320	394	386	377	359	314	291	330	318	246	350
		55.5%	52.2%	55.0%	47.1%	46.0%	43.9%	50.0%	43.2%	47.0%	26.4%	20.6%	33.8%	44.9%	40.7%	38.9%
売却		58	56	76	96	83	72	93	80	77	84	103	115	106	113	150
		11.1%	9.8%	11.4%	12.9%	11.9%	8.0%	12.0%	9.2%	10.1%	7.1%	7.3%	11.8%	15.0%	18.7%	16.7%
競合(同業他社への乗り換え)		58	81	85	126	78	175	132	135	107	151	117	127	92	84	150
		11.1%	14.1%	12.8%	16.9%	11.2%	19.5%	17.1%	15.5%	14.0%	12.7%	8.3%	13.0%	13.0%	13.9%	16.7%
当社都合(赤字による解約)		26	45	20	38	55	68	38	40	44	433	612	177	20	31	50
		5.0%	7.9%	3.0%	5.1%	7.9%	7.6%	4.9%	4.6%	5.8%	36.4%	43.3%	18.1%	2.8%	5.1%	5.6%
その他		90	92	119	135	160	189	123	241	177	208	290	228	172	130	200
		17.3%	16.1%	17.9%	18.1%	23.0%	21.0%	15.9%	27.6%	23.2%	17.5%	20.5%	23.3%	24.3%	21.5%	22.2%

11-7.タイムズパーキング - スタンダード占有率

(下段：前年同期差)

		'11/10	'12/10	'13/10	'14/10	'15/10	'16/10	'17/10	'18/10	'19/10	'20/10	'21/10	'22/10	'23/10	'24/10
占有率	(%)	43.8%	44.2%	43.9%	43.7%	44.2%	45.1%	45.6%	46.6%	47.5%	41.4%	44.0%	48.0%	50.0%	50.6%
		+1.1pt	+0.4pt	△0.2pt	△0.2pt	+0.5pt	+0.9pt	+0.5pt	+0.9pt	+0.9pt	△6.1pt	+2.6pt	+4.0pt	+2.0pt	+0.6pt

11-8.タイムズパーキング - 非連結業績

		'11/10	'12/10	'13/10	'14/10	'15/10	'16/10	'17/10	'18/10	'19/10	'20/10	'21/10	'22/10	'23/10	'24/10	'25/10 計画
売上高	(百万円)	97,756	106,779	116,555	122,333	128,970	136,522	143,959	152,305	160,550	144,703	140,025	148,328	157,831	170,700	183,500
		108.2%	109.2%	109.2%	105.0%	105.4%	105.9%	105.4%	105.8%	105.4%	90.1%	96.8%	105.9%	106.4%	108.2%	107.5%
スタンダード		71,348	75,539	79,261	82,029	85,849	88,872	92,028	95,071	98,080	89,106	85,721	89,011	92,315	97,127	102,000
		104.8%	105.9%	104.9%	103.5%	104.7%	103.5%	103.6%	103.3%	103.2%	90.9%	96.2%	103.8%	103.7%	105.2%	105.0%
パートナーサービス		26,407	31,239	37,294	40,303	43,120	47,650	51,930	57,234	62,470	55,596	54,303	59,317	65,516	73,573	81,500
		118.7%	118.3%	119.4%	108.1%	107.0%	110.5%	109.0%	110.2%	109.1%	89.0%	97.7%	109.2%	110.5%	112.3%	110.8%
売上原価		74,446	79,192	86,738	93,584	99,939	104,387	110,573	116,508	123,395	126,278	114,901	111,238	115,475	125,021	136,000
		110.5%	106.4%	109.5%	107.9%	106.8%	104.5%	105.9%	105.4%	105.9%	102.3%	91.0%	96.8%	103.8%	108.3%	108.8%
スタンダード		55,004	57,121	60,039	63,186	67,463	68,942	71,740	74,161	77,220	77,403	69,863	66,809	68,394	71,929	77,000
		107.8%	103.8%	105.1%	105.2%	106.8%	102.2%	104.1%	103.4%	104.1%	100.2%	90.3%	95.6%	102.4%	105.2%	107.0%
パートナーサービス		19,442	22,071	26,699	30,398	32,475	35,445	38,832	42,347	46,174	48,874	45,038	44,429	47,080	53,091	59,000
		118.9%	113.5%	121.0%	113.9%	106.8%	109.1%	109.6%	109.0%	109.0%	105.8%	92.2%	98.6%	106.0%	112.8%	111.1%
売上総利益		23,309	27,587	29,816	28,748	29,031	32,135	33,385	35,797	37,155	18,424	25,123	37,089	42,356	45,679	47,500
		101.5%	118.4%	108.1%	96.4%	101.0%	110.7%	103.9%	107.2%	103.8%	49.6%	136.4%	147.6%	114.2%	107.8%	104.0%
スタンダード		16,344	18,418	19,221	18,843	18,386	19,930	20,288	20,909	20,859	11,703	15,858	22,202	23,920	25,197	25,000
		95.8%	112.7%	104.4%	98.0%	97.8%	108.4%	101.8%	103.1%	99.8%	56.1%	135.5%	140.0%	107.7%	105.3%	99.2%
パートナーサービス		6,964	9,168	10,594	9,905	10,644	12,205	13,097	14,887	16,295	6,721	9,265	14,887	18,435	20,481	22,500
		117.9%	131.6%	115.6%	93.5%	107.5%	114.7%	107.3%	113.7%	109.5%	41.2%	137.8%	160.7%	123.8%	111.1%	109.9%
売上総利益率	(%)	23.8%	25.8%	25.6%	23.5%	22.5%	23.5%	23.2%	23.5%	23.1%	12.7%	17.9%	25.0%	26.8%	26.8%	25.9%
		△1.6pt	+2.0pt	△0.3pt	△2.1pt	△1.0pt	+1.0pt	△0.3pt	+0.3pt	△0.4pt	△10.4pt	+5.2pt	+7.1pt	+1.8pt	△0.1pt	△0.9pt
スタンダード		22.9%	24.4%	24.3%	23.0%	21.4%	22.4%	22.0%	22.0%	21.3%	13.1%	18.5%	24.9%	25.9%	25.9%	24.5%
		△2.2pt	+1.5pt	△0.1pt	△1.3pt	△1.6pt	+1.0pt	△0.4pt	△0.1pt	△0.7pt	△8.1pt	+5.4pt	+6.4pt	+1.0pt	+0.0pt	△1.4pt
パートナーサービス		26.4%	29.3%	28.4%	24.6%	24.7%	25.6%	25.2%	26.0%	26.1%	12.1%	17.1%	25.1%	28.1%	27.8%	27.6%
		△0.2pt	+3.0pt	△0.9pt	△3.8pt	+0.1pt	+0.9pt	△0.4pt	+0.8pt	+0.1pt	△14.0pt	+5.0pt	+8.0pt	+3.0pt	△0.3pt	△0.2pt

11-9.タイムズパーキング - 台/件・月当たり売上高・売上総利益

(下段：前年同期比)

		'11/10	'12/10	'13/10	'14/10	'15/10	'16/10	'17/10	'18/10	'19/10	'20/10	'21/10	'22/10	'23/10	'24/10	'25/10 計画
スタンダード	売上高	47.1	47.1	46.1	45.1	44.1	44.0	44.1	44.7	45.3	40.6	42.2	47.3	50.2	52.6	53.0
		95.4%	99.9%	97.9%	97.7%	97.8%	99.9%	100.2%	101.3%	101.3%	89.6%	103.9%	112.2%	106.2%	104.6%	100.7%
	売上原価	36.3	35.6	34.9	34.7	34.6	34.1	34.4	34.9	35.6	35.3	34.4	35.5	37.2	38.9	40.0
		98.1%	98.0%	98.1%	99.4%	99.8%	98.6%	100.7%	101.4%	102.2%	98.9%	97.5%	103.3%	104.8%	104.6%	102.6%
	売上総利益	10.8	11.4	11.1	10.3	9.4	9.8	9.7	9.8	9.6	5.3	7.8	11.8	13.0	13.6	13.0
		87.2%	106.3%	97.4%	92.6%	91.2%	104.5%	98.5%	101.1%	97.9%	55.4%	146.3%	151.2%	110.3%	104.8%	95.2%
パートナーサービス	売上高	1,236.2	1,284.0	1,312.2	1,282.7	1,270.1	1,316.4	1,320.3	1,344.1	1,369.6	1,137.4	1,119.6	1,257.4	1,351.4	1,395.3	1,405.0
		101.6%	103.9%	102.2%	97.8%	99.0%	103.6%	100.3%	101.8%	101.9%	83.1%	98.4%	112.3%	107.5%	103.2%	100.7%
	売上原価	910.1	907.1	939.4	967.4	956.5	979.2	987.3	994.5	1,012.3	999.9	928.6	941.8	971.1	1,006.8	1,017.0
		101.9%	99.7%	103.6%	103.0%	98.9%	102.4%	100.8%	100.7%	101.8%	98.8%	92.9%	101.4%	103.1%	103.7%	101.0%
	売上総利益	326.0	376.8	372.7	315.2	313.5	337.1	333.0	349.6	357.2	137.5	191.0	315.6	380.2	388.4	388.0
		101.0%	115.6%	98.9%	84.6%	99.5%	107.5%	98.8%	105.0%	102.2%	38.5%	138.9%	165.2%	120.5%	102.1%	99.9%

12.モビリティ事業データ

12-1.タイムズカー車両数・拠点数

(下段：前期末比)

		'11/10	'12/10	'13/10	'14/10	'15/10	'16/10	'17/10	'18/10	'19/10	'20/10	'21/10	'22/10	'23/10	'24/10	'25/10 計画
貸出拠点数	(箇所)	2,583	3,671	4,963	6,376	7,772	9,031	10,504	11,717	13,024	13,443	13,397	14,132	16,017	19,961	25,000
		221.0%	142.1%	135.2%	128.5%	121.9%	116.2%	116.3%	111.5%	111.2%	103.2%	99.7%	105.5%	113.3%	124.6%	125.2%
車両数	(台)	26,235	29,578	32,974	36,317	39,020	42,943	48,989	54,593	57,716	44,841	52,552	53,062	60,047	69,170	79,000
		121.7%	112.7%	111.5%	110.1%	107.4%	110.1%	114.1%	111.4%	105.7%	77.7%	117.2%	101.0%	113.2%	115.2%	114.2%
うち、タイムズカー専用車両	(台)											37,816	36,954	42,174	51,051	61,700
												-	97.7%	114.1%	121.0%	120.9%

12-2.タイムズカー会員数

(下段：前期末比・差)

		'11/10	'12/10	'13/10	'14/10	'15/10	'16/10	'17/10	'18/10	'19/10	'20/10	'21/10	'22/10	'23/10	'24/10	'25/10 計画
会員数	(千人)	71.8	150.3	279.4	414.9	549.0	719.4	903.5	1,099.1	1,305.3	1,506.7	1,725.0	2,040.6	2,423.8	3,032.6	3,660.0
		307.1%	209.3%	185.9%	148.5%	132.3%	131.0%	125.6%	121.6%	118.8%	115.4%	114.5%	118.3%	118.8%	125.1%	120.7%
個人		53.5	103.5	183.1	267.6	348.4	447.5	551.1	667.9	777.6	892.6	1,024.8	1,231.0	1,494.8	1,903.4	2,280.0
		367.1%	193.4%	176.9%	146.1%	130.2%	128.4%	123.1%	121.2%	116.4%	114.8%	114.8%	120.1%	121.4%	127.3%	119.8%
法人		18.3	46.8	96.3	147.3	200.5	271.8	352.4	431.2	527.6	614.1	700.1	809.6	928.9	1,129.2	1,380.0
		207.8%	255.8%	205.6%	152.9%	136.1%	135.5%	129.6%	122.4%	122.4%	116.4%	114.0%	115.6%	114.7%	121.6%	122.2%
法人会員比率	(%)	25.5%	31.2%	34.5%	35.5%	36.5%	37.8%	39.0%	39.2%	40.4%	40.8%	40.6%	39.7%	38.3%	37.2%	37.7%
		△12.2pt	+5.7pt	+3.3pt	+1.0pt	+1.0pt	+1.3pt	+1.2pt	+0.2pt	+1.2pt	+0.3pt	△0.2pt	△0.9pt	△1.3pt	△1.1pt	+0.5pt

12-3.台・月当たり売上高・利益 (直営のみ)

(下段：前年同期比)

		'11/10	'12/10	'13/10	'14/10	'15/10	'16/10	'17/10	'18/10	'19/10	'20/10	'21/10	'22/10	'23/10	'24/10	'25/10 計画
タイムズカー 売上高	(千円/台・月)	98.7	95.8	100.9	105.6	110.1	113.4	116.0	123.0	127.1	122.0	118.2	127.8	150.0	148.8	153.2
		80.3%	97.0%	105.4%	104.6%	104.2%	103.0%	102.4%	106.0%	103.3%	96.0%	96.9%	108.1%	117.3%	99.2%	102.9%
営業費用		99.8	97.4	99.2	103.6	102.0	101.8	104.6	110.5	112.7	119.6	113.1	113.3	123.2	117.0	123.0
		81.4%	97.7%	101.8%	104.5%	98.4%	99.8%	102.8%	105.6%	102.0%	106.2%	94.6%	100.1%	108.7%	95.0%	105.1%
営業利益		△1.0	△1.6	1.7	1.9	8.1	11.5	11.4	12.5	14.4	2.3	5.0	14.5	26.7	31.7	30.2
		-	155.6%	-	114.3%	413.9%	143.0%	98.3%	109.8%	115.0%	16.1%	219.9%	285.5%	184.2%	118.6%	95.1%

[参考] グループ内取引の駐車場費用を算入した場合の台・月当たり利益

(下段：前年同期比)

		'11/10	'12/10	'13/10	'14/10	'15/10	'16/10	'17/10	'18/10	'19/10	'20/10	'21/10	'22/10	'23/10	'24/10	'25/10 計画
タイムズカー 営業利益	(千円/台・月)	-	-	-	-	-	-	-	-	7.7	△5.9	△2.2	6.3	18.7	24.1	22.3
		-	-	-	-	-	-	-	-	-	-	-	-	294.5%	128.6%	92.7%

[参考] 車両売却・処分 売上高・利益

(下段：前年同期比)

		'11/10	'12/10	'13/10	'14/10	'15/10	'16/10	'17/10	'18/10	'19/10	'20/10	'21/10	'22/10	'23/10	'24/10	'25/10 計画
売上高	(百万円)	-	-	-	-	-	-	-	7,464	10,542	13,305	8,408	8,044	10,002	5,088	5,200
		-	-	-	-	-	-	-	-	141.2%	126.2%	63.2%	95.7%	124.3%	50.9%	102.2%
営業利益		-	-	-	-	-	-	-	1,743	2,842	1,123	1,109	2,830	3,753	1,391	1,400
		-	-	-	-	-	-	-	-	163.0%	39.5%	98.8%	255.2%	132.6%	37.1%	100.6%

[参考] タイムズカー 内訳

(下段：前年同期比)

		`11/10	`12/10	`13/10	`14/10	`15/10	`16/10	`17/10	`18/10	`19/10	`20/10
レンタカー 売上高	(千円/台・月)	104.3	100.8	104.8	109.2	116.5	120.9	125.9	131.9	138.0	145.6
		84.9%	96.6%	104.0%	104.3%	106.7%	103.8%	104.1%	104.8%	104.6%	105.5%
営業費用		99.3	97.6	98.2	106.1	109.1	113.4	118.9	126.1	132.3	170.5
営業利益		4.9	3.1	6.5	3.0	7.4	7.5	6.9	5.8	5.7	△24.8
		1951.6%	62.8%	208.3%	47.0%	241.4%	102.1%	92.0%	83.4%	98.8%	-
カーシェア 売上高		67.8	79.3	92.0	99.7	102.2	104.9	105.9	113.7	115.7	106.9
		-	117.0%	116.0%	108.4%	102.5%	102.6%	100.9%	107.4%	101.8%	92.4%
営業費用		102.1	96.8	101.5	99.6	93.3	88.8	89.9	94.1	92.3	87.3
営業利益		△34.3	△17.4	△9.5	0.1	8.9	16.0	16.0	19.5	23.4	19.5
		-	50.9%	54.6%	-	5709.6%	179.6%	99.4%	122.2%	119.6%	83.7%

[参考] グループ内取引の駐車場費用を算入した場合の台・月当たり利益 (カーシェア)

(下段：前年同期比)

		`11/10	`12/10	`13/10	`14/10	`15/10	`16/10	`17/10	`18/10	`19/10	`20/10
カーシェア 営業利益	(千円/台・月)	-	-	-	-	-	-	-	-	9.7	6.0
		-	-	-	-	-	-	-	-	-	61.9%

13. 会員サービス

(下段：前期末比)

		`11/10	`12/10	`13/10	`14/10	`15/10	`16/10	`17/10	`18/10	`19/10	`20/10	`21/10	`22/10	`23/10	`24/10
タイムスクラブ会員	(千人)	3,660.5	4,144.5	4,698.8	5,131.0	5,539.4	5,984.2	6,565.9	7,247.2	7,990.2	8,538.8	9,063.2	9,843.0	10,837.6	11,927.4
		115.2%	113.2%	113.4%	109.2%	108.0%	108.0%	109.7%	110.4%	110.3%	106.9%	106.1%	108.6%	110.1%	110.1%
タイムズビジネスカード	(千枚)	110.6	126.3	155.7	312.1	411.7	558.1	692.8	820.1	939.7	1,031.9	1,138.3	1,267.3	1,392.1	1,596.2
		118.0%	114.2%	123.3%	200.4%	131.9%	135.6%	124.1%	118.4%	114.6%	109.8%	110.3%	111.3%	109.9%	114.7%
タイムズベイ 加盟店舗	(店)	-	-	-	-	-	-	1,422	7,065	25,559	45,192	40,796	31,168	31,550	32,457
		-	-	-	-	-	-	-	496.8%	361.8%	176.8%	90.3%	76.4%	101.2%	102.9%

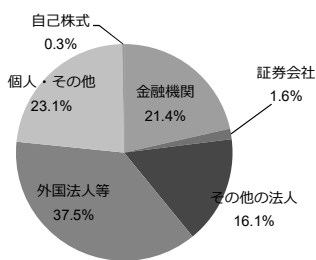
14.株主データ

23/10月期 通期

■所有者

	株式数(千株)	構成比	人数(人)	構成比
合計	171,048	100.0%	47,415	100.0%
政府・地方公共団体	-	-	-	-
金融機関	36,686	21.4%	30	0.1%
証券会社	2,709	1.6%	47	0.1%
その他の法人	27,555	16.1%	314	0.7%
うち、証券保管振替機構	12	0.0%	1	0.0%
外国法人等	64,072	37.5%	396	0.8%
うち、個人	20	0.0%	80	0.2%
個人・その他	39,496	23.1%	46,627	98.3%
自己株式	528	0.3%	1	0.0%

■株式数構成比



■大株主の状況

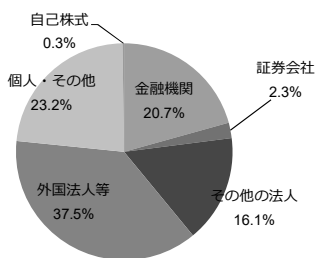
順位	株主氏名	株式数(千株)	持株比率
1	有限会社千寿	21,746	12.7%
2	日本マスタートラスト信託銀行株式会社 (信託口)	19,952	11.7%
3	株式会社日本カストディ銀行 (信託口)	8,513	5.0%
4	西川 光一	8,110	4.7%
5	西川 功	6,194	3.6%
6	BNY GCM CLIENT ACCOUNT JPRD AC ISG (FE-AC)	5,656	3.3%
7	日本信号株式会社	3,853	2.3%
8	GOVERNMENT OF NORWAY	3,666	2.1%
9	BANK PICTET AND CIE(EUROPE)AG,SUCCURSALE DE LUXEMBOURG REF UCITS	3,323	1.9%
10	西川 恭子	3,200	1.9%
合計		84,216	49.2%

24/10月期 上期

■所有者

	株式数(千株)	構成比	人数(人)	構成比
合計	171,048	100.0%	45,962	100.0%
政府・地方公共団体	-	-	-	-
金融機関	35,365	20.7%	36	0.1%
証券会社	3,987	2.3%	38	0.1%
その他の法人	27,456	16.1%	301	0.7%
うち、証券保管振替機構	12	0.0%	1	0.0%
外国法人等	64,148	37.5%	427	0.9%
うち、個人	28	0.0%	95	0.2%
個人・その他	39,635	23.2%	45,159	98.3%
自己株式	455	0.3%	1	0.0%

■株式数構成比



■大株主の状況

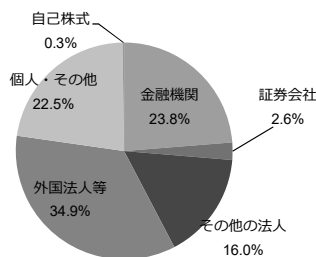
順位	株主氏名	株式数(千株)	持株比率
1	有限会社千寿	21,746	12.7%
2	日本マスタートラスト信託銀行株式会社 (信託口)	19,437	11.4%
3	西川 光一	8,110	4.7%
4	株式会社日本カストディ銀行 (信託口)	7,115	4.2%
5	西川 功	6,194	3.6%
6	BANK PICTET AND CIE(EUROPE)AG,SUCCURSALE DE LUXEMBOURG REF UCITS	4,081	2.4%
7	日本信号株式会社	3,853	2.3%
8	GOVERNMENT OF NORWAY	3,747	2.2%
9	JP JPMSE LUX RE UBS AG LONDON BRANCH EQ CO	3,224	1.9%
10	西川 恭子	3,200	1.9%
合計		80,710	47.2%

24/10月期 通期

■所有者

	株式数(千株)	構成比	人数(人)	構成比
合計	171,048	100.0%	43,339	100.0%
政府・地方公共団体	-	-	-	-
金融機関	40,649	23.8%	36	0.1%
証券会社	4,413	2.6%	34	0.1%
その他の法人	27,405	16.0%	289	0.7%
うち、証券保管振替機構	12	0.0%	1	0.0%
外国法人等	59,686	34.9%	384	0.9%
うち、個人	37	0.0%	91	0.2%
個人・その他	38,438	22.5%	42,595	98.3%
自己株式	455	0.3%	1	0.0%

■株式数構成比



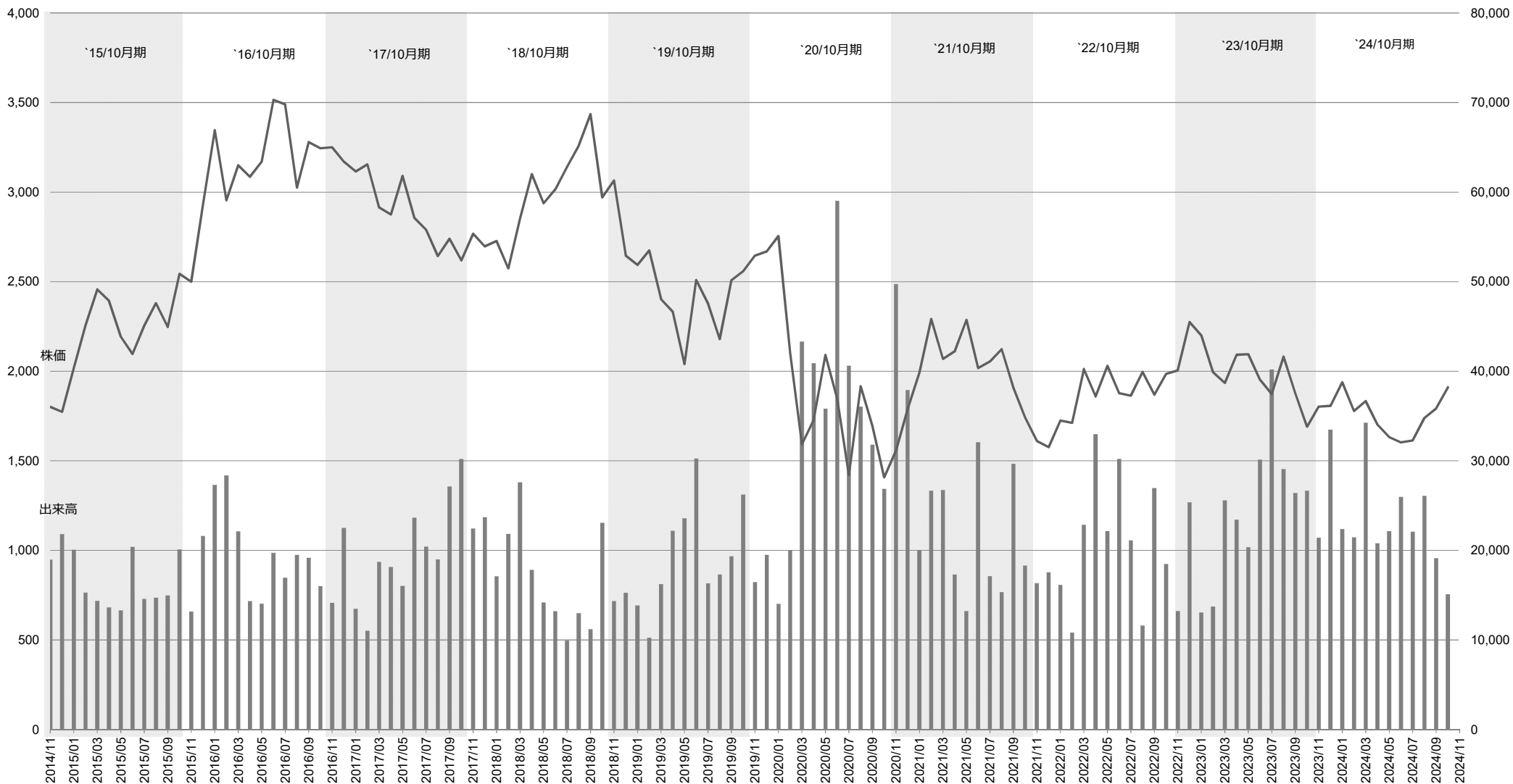
■大株主の状況

順位	株主氏名	株式数(千株)	持株比率
1	日本マスタートラスト信託銀行株式会社 (信託口)	23,232	13.6%
2	有限会社千寿	21,746	12.7%
3	株式会社日本カストディ銀行 (信託口)	9,468	5.5%
4	西川 光一	8,110	4.7%
5	西川 功	6,194	3.6%
6	UBS AG LONDON A/C IPB SEGREGATED CLIENT ACCOUNT	4,760	2.8%
7	日本信号株式会社	3,853	2.3%
8	BANK PICTET AND CIE(EUROPE)AG,SUCCURSALE DE LUXEMBOURG REF UCITS	3,317	1.9%
9	西川 恭子	3,200	1.9%
10	GOLDMAN SACHS INTERNATIONAL	2,950	1.7%
合計		86,832	50.8%

15. 株価データ

[株価：円]

[出来高：千株]



[参考] 新株予約権等の状況

	ストックオプション2018	有償ストックオプション2019	2025年満期ユーロ円建CB	2028年満期ユーロ円建CB
決議	2018/11/30 取締役会	2019/2/28 取締役会	2018/10/11 取締役会	2023/2/8 取締役会
行使期間	2021/11/1-2026/12/31	2021/4/1-2027/3/31	2018/11/12-2025/10/15	2023/3/10-2028/2/10
種類	普通株式	普通株式	普通株式	普通株式
残数(株)	247,000	294,000	1,911,714	14,124,294
発行額	-	-	35,000百万円 (残存価格7,310百万円)	35,000百万円
備考	-	株価コミットメント型有償新株予約権2019	転換価格3,823.8円 2023/2/8買入消却を決定(買入額27,413百万円)	転換価格2,478円